



# THREAT HOT INK RSIA

INTERNATIONAL GUIDE 2021  
SYDNEY & PERTH

# CUT THRO THIN

## Sharpen your mind at one of Australia's top universities

As the **top university in Australia** for Overall Satisfaction and Skills Development\*, Notre Dame educates you in critical thinking so you can question assumptions and challenge the accepted, no matter your degree. With cosmopolitan campuses in Perth and Sydney, we provide personalised attention in smaller classes to support you throughout your studies.

\*Student Experience Survey 2019.

Notre Dame Australia  
Natural critical thinkers



# THOUGH KING

Arts & Sciences | Business | Education | Health Sciences  
Law | Medicine | Nursing | Philosophy & Theology | Physiotherapy

**No.1 university in Australia**  
**for Overall Satisfaction and**  
**Skills Development**

Find out more [notredame.edu.au/international](https://notredame.edu.au/international)

# C O N T E N T S



01

# Discover

## Discover Notre Dame

Vice Chancellor's Welcome	6
Why Notre Dame	10
Our Programs	12
Research Institutes	14
Campus Life	16
Living in Australia	18
Our Campuses	20
Accommodation	24
Student Support	26

02

# Choose

## Finding the degree of your choice

Arts & Sciences	30
Business	46
Law	56
Education	62
Philosophy & Theology	70
Health Sciences	76
Medicine	82
Nursing & Midwifery	88
Physiotherapy	94

03

# Apply

## Admission and application

How to Apply	100
Pathways	102
Early Offer	104
Scholarships & Fees	105
Degree Tables	106
Frequently Asked Questions	110
Application Form	111



# Welcome to The University of Notre Dame Australia's 2021 International Guide

**“At Notre Dame we aim to educate you for life beyond university through our Core Curriculum, providing the fundamentals of critical thinking that equip you for future challenges.”**

Choosing a university that will prepare you for a rich, fulfilling career and life is a big decision. To help you make that choice, the pages within this guide will let you explore campus life at Notre Dame and provide an insight into our unique approach to university education, our broad range of programs and student support services.

As a university, Notre Dame draws on centuries of teaching, scholarship and research, the foundations of which we share with over 2,000 Catholic universities and colleges across the world. We welcome students of all faiths, or no faith at all and, as a community, we promote and enjoy open and rigorous enquiry, debate and discussion.

Notre Dame’s holistic approach to education is steeped in our intellectual tradition and is designed to develop you both academically and personally. This underscores why we are the number one university nationally for overall graduate satisfaction (Graduate Outcomes Survey 2019, [qilt.edu.au](http://qilt.edu.au)).

At Notre Dame, we believe a student’s personal growth is as important as their academic development so we aim to teach you how to lead a fulfilling life as well as have a successful career through our Core Curriculum, which is embedded in every one of our degrees. It provides the fundamentals of critical thinking that equip you to problem-solve, adapt and become an ethical leader.

Should you have any questions after studying our guide, I encourage you to get in touch with our team. I look forward to welcoming you on campus in 2021.

**Professor Francis Campbell**  
Vice Chancellor

**THE OBJECTS OF THE UNIVERSITY OF NOTRE DAME AUSTRALIA ARE:**

- a) the provision of university education within a context of Catholic faith and values; and
- b) the provision of an excellent standard of –
  - i) teaching, scholarship and research;
  - ii) training for the professions; and
  - iii) pastoral care for its students.

# 01

## DISCOVER NOTRE DAME

WHY NOTRE DAME	10
OUR PROGRAMS	12
RESEARCH INSTITUTES	14
CAMPUS LIFE	16
LIVING IN AUSTRALIA	18
OUR CAMPUSES	20
ACCOMMODATION	24
STUDENT SUPPORT	26







The University of Notre Dame Australia has achieved the following rankings in the Australian Federal Government's student and employer surveys:

## Skills Development

**#1 in Australia\***

## Overall Experience

**#1 in Australia\*\***

## Overall Satisfaction

**#1 in Australia\*\*\***

## Skills Scale

**#1 in Perth & Sydney\*\*\***

Federal Government's Quality Indicators for Learning & Teaching – [compared.edu.au](https://compared.edu.au).

\* 2019 Student Experience Survey

\*\* 2020 Good Universities Guide

\*\*\* 2019 Graduate Outcomes Survey



**“I chose Notre Dame because the University understands the importance of practical learning. The extensive amount of professional experience will really help start your career with your foot already in the door.”**

*Luciana*

Education student

## Internships

Notre Dame places a strong focus on practical interdisciplinary skills, collaboration and employability. This is why our graduates are ranked number one in Perth and Sydney for Graduate Employability (Employer Satisfaction Survey, compared.edu.au).

SCHOOL	PRACTICUM HOURS
Arts & Sciences	80–225 hours
Business	150–350 hours
Education	800–1280 hours
Health Sciences	150–1080 hours
Nursing	1026–1120 hours
Physiotherapy	1200–1400 hours

## Get a degree that sets your career apart

We give you unparalleled opportunities to gain the skills and experience employers value through our work-integrated learning programs, mentoring, and joint initiatives with business and industry.

## Study at inner city campuses

Our vibrant inner city campuses spread coast-to-coast from Sydney, New South Wales on the east coast, to the port city of Fremantle in Perth, Western Australia.

These bustling hubs are close to public transport, shopping centres, a wide array of cafés and restaurants, and Central Business Districts.

## Learn from experts

Benefit from the expertise of your teachers in small classes that facilitate face-to-face discussion and practical, career-focused learning.

## Critical thinking skills

In this age of unprecedented change, you will need critical thinking skills to separate real news from fake news, truth from lies, and to distinguish information from knowledge.

At Notre Dame, our Core Curriculum will empower you with the fundamentals of critical thinking. It will provide lifelong skills – essential for a new generation of CEOs, entrepreneurs, leaders and global citizens, like you.

## Experience the world

Study while experiencing the world. Notre Dame inspires you to become an active global citizen through a range of international exchange programs, professional placements, study tours and volunteer opportunities.

# DISCOVER

## OUR PROGRAMS

### ARTS & SCIENCES

APPLIED PSYCHOLOGY  
ARCHITECTURE  
BEHAVIOURAL SCIENCE  
COMMUNICATIONS & MEDIA  
COUNSELLING  
POLITICS  
JOURNALISM  
SOCIAL JUSTICE

ARCHAEOLOGY  
HISTORY  
SCIENCE  
ENVIRONMENTAL MANAGEMENT

ENGLISH LITERATURE  
FILM & SCREEN PRODUCTION  
PHOTOGRAPHY  
THEATRE  
WRITING

### BUSINESS

ACCOUNTING  
ADVERTISING  
COMMERCE  
ECONOMICS  
FINANCE  
HUMAN RESOURCES  
MANAGEMENT  
MARKETING & PUBLIC RELATIONS  
MASTER OF BUSINESS ADMINISTRATION  
SPORT & RECREATION MANAGEMENT

### IT'S ALL HERE

[notredame.edu.au/study](https://notredame.edu.au/study)

### EDUCATION

EARLY CHILDHOOD  
PRIMARY  
SECONDARY

### LAW

### PHILOSOPHY & THEOLOGY

### HEALTH SCIENCES

HEALTH PROMOTION  
HEALTH & PHYSICAL EDUCATION  
OUTDOOR RECREATION  
EXERCISE AND SPORT SCIENCE  
BIOMEDICAL SCIENCE

### MEDICINE

### NURSING & MIDWIFERY

### PHYSIOTHERAPY







ARTS & SCIENCES



HEALTH SCIENCES



BUSINESS



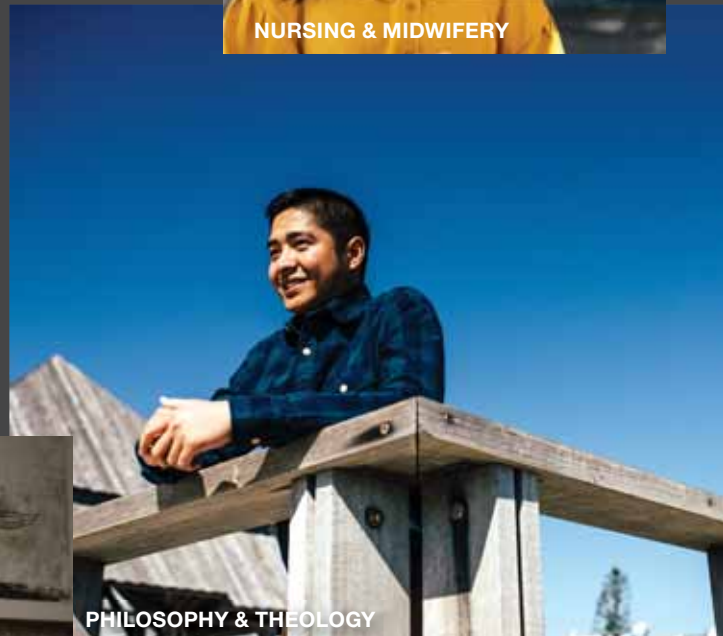
NURSING & MIDWIFERY



EDUCATION



LAW



PHILOSOPHY & THEOLOGY



PHYSIOTHERAPY

**“The support for my thesis, validating the hype of blockchain technology, exploring its relevance in the business world – Notre Dame gave me the best return on investment of my entire education.”**

*FABIO*

Higher Degree by Research graduate  
Doctor of Business Administration  
from Brazil

Read Fabio's story  
[notredame.edu.au/fabio](https://notredame.edu.au/fabio)





## Research Institutes

### Institute for Ethics & Society

The Institute for Ethics & Society aims to foster ethical awareness in professional and social life through the following:

- Developing a vibrant research agenda in targeted fields of academic study
- Providing expertise in ethics education for students and staff at Notre Dame
- Delivering training services for industry in areas of professional ethics
- Facilitating public engagement on issues of ethical importance

The Institute for Ethics & Society research focus areas include Moral Philosophy & Ethics Education, Bioethics & Healthcare Ethics, and Religion & Global Ethics.

### Institute for Health Research

The Institute for Health Research provides expertise in the design and analysis of complex health research with University researchers and those in the wider healthcare system. Through supervision of postgraduate research students and involvement in collaborative studies with other academic and clinical researchers, the Institute for Health Research has a vibrant research focus with strong industry links that seeks to improve the health and wellbeing of the community.

### Nulungu Research Institute

The Nulungu Research Institute focuses on three core research themes—Caring for Country; Education; and Aboriginal Wellbeing and Health—within a context of valuing Aboriginal knowledge. Based at Notre Dame Broome, a Campus of Reconciliation, our research is guided by the core principle of ‘Right People, Right Country, Right Way’.

A key feature of Nulungu’s research profile is impactful community-driven collaborative projects with national and international academic institutions, teaching and research communities, government and industry.

# DISCOVER

CAMPUS LIFE



## Student experience

At Notre Dame, university life extends beyond the classroom.

You can participate in our leadership and elite athlete programs, join a club or society, volunteer locally or overseas, study abroad, and much more. You'll be supported throughout your journey by our dedicated careers team and counselling service.

## Student Association and clubs

Notre Dame's Student Association is at the centre of student life at the University. As a student you are a member of an association that represents and supports all students and develops Notre Dame's unique student community. There are also numerous student clubs and societies offering opportunities for you to develop socially, culturally, professionally, spiritually and academically.

## Leadership program

Leadership and teamwork skills are highly desirable attributes for the workplace and can increase your employability. Notre Dame's leadership program develops your leadership skills through training, forums, and active engagement opportunities including volunteering.

## Sports

Campus life supports and enables participation in a wide variety of sporting, social and cultural pursuits. You can get involved in social sporting competitions, club sport or intervarsity events such as the UniSport Nationals.

## Elite Athlete program

Notre Dame is part of the Elite Athlete Education Network (EAEN), committed to supporting elite athletes to achieve academic excellence whilst pursuing a sporting career. Eligible elite athletes will be able to negotiate their study and assessment options or explore flexible study arrangements throughout the course of their university degree.



**IT'S ALL HERE.**

[notredame.edu.au/students](https://notredame.edu.au/students)





Three campuses, coast to coast – from Fremantle and Broome in Western Australia to Sydney in New South Wales.

**SYDNEY** -33.884957, 151.198351  
**PERTH** -32.056158, 115.743572  
**BROOME** -17.961286, 122.223943



**EXPLORE  
AUSTRALIA**





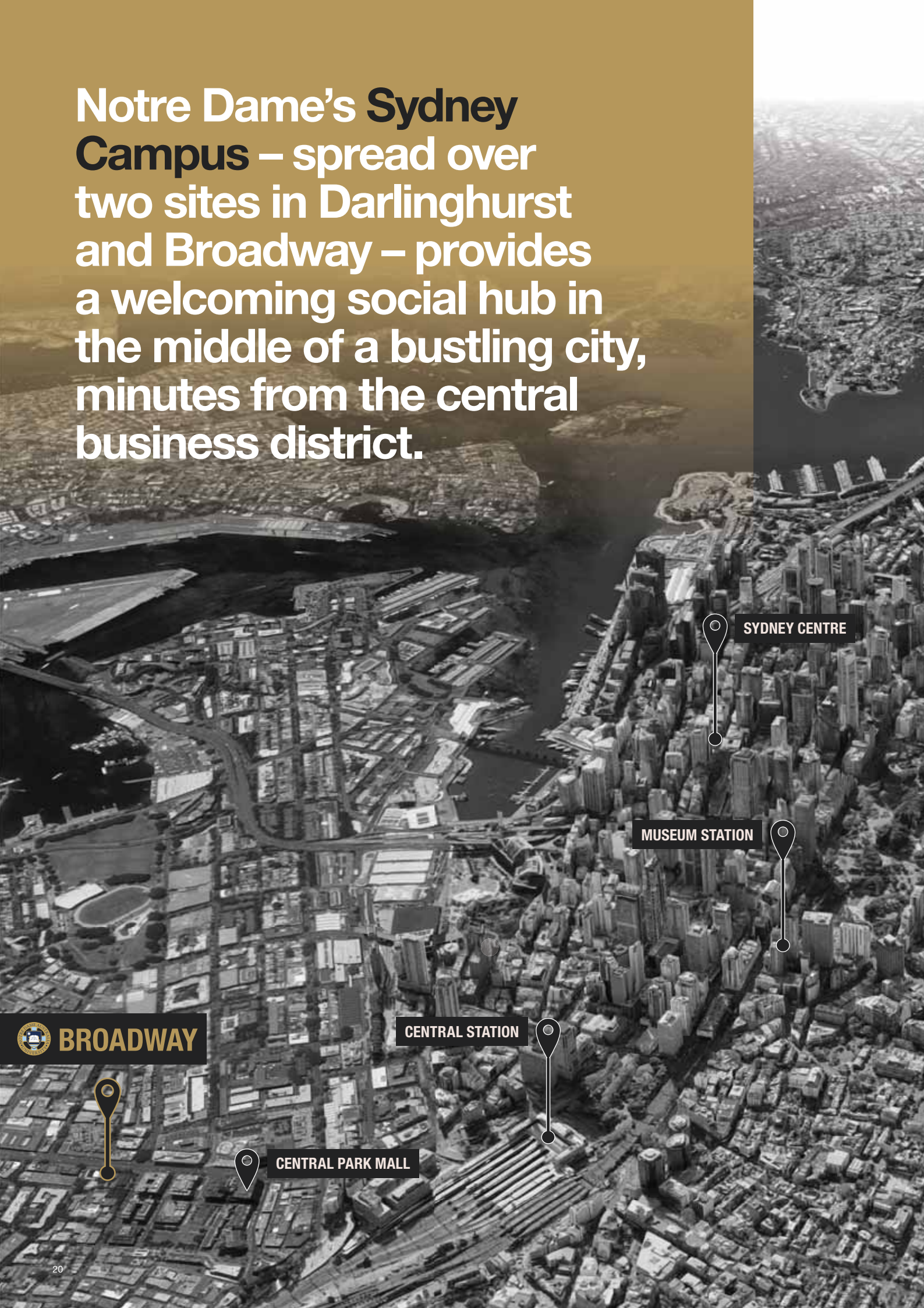
Photo: Miriwoong Gajerrong dancers perform the Wanga Dance at the Kimberley Aboriginal Law and Culture Festival, Jarlmandang Buru, 2015. (Reproduced with the permission of the Kimberley Aboriginal Law and Culture Centre [KALACC]) © KALACC – Photographer: Stephanie King

## ACKNOWLEDGMENT OF COUNTRY

The University of Notre Dame Australia is proud to acknowledge the traditional owners and custodians of this land upon which our University sits. The University acknowledges that the Fremantle Campus is located on Wadjuk Country, the Broome Campus on Yawuru Country and the Sydney Campus on Cadigal Country.



Notre Dame's **Sydney Campus** – spread over two sites in Darlinghurst and Broadway – provides a welcoming social hub in the middle of a bustling city, minutes from the central business district.



**BROADWAY**

**CENTRAL STATION**

**CENTRAL PARK MALL**

**SYDNEY CENTRE**

**MUSEUM STATION**





## Vibrant city life

Notre Dame's Sydney Campus (spread over two sites) is located amongst colourful inner city suburbs and Sydney's most vibrant neighbourhoods. Nearby hotspots include: Sydney city centre (15 minute walk), Hyde Park, Sydney Tower

### Broadway site

- Broadway Shopping Centre
- Fusion precinct (food & fashion)
- Cinemas
- Central Park Mall
- Sydney's famous Spice Alley

### Darlinghurst site

- Metres from St Vincent's Hospital
- Palace Verona Cinemas
- Live music venues
- Galleries
- Shops & luxury fashion brands

## Schools

The **Broadway** site has 13 buildings located throughout Chippendale to accommodate our growing student population. It is home to most of our Schools and Departments, including Arts & Sciences, Business, Education, Law, and Philosophy & Theology.

Notre Dame's **Darlinghurst** site is home to the University's Schools of Medicine and Nursing, and gives students access to excellent facilities including simulated wards and consultation suites.

## Transport

Both sites are a short walk from major train stations and serviced by multiple bus routes.



30 minutes from Perth,  
Notre Dame's **Fremantle  
Campus** is located in the  
port city's West End.  
Housed in historic buildings  
with a café on every corner,  
it boasts both charm and  
convenience.

FREMANTLE STATION  
& BUSPORT

WOOLSTORES  
SHOPPING CENTRE

FREMANTLE MARKETS



**FREMANTLE**

CAPPUCCINO STRIP

◀ BATHERS BEACH

FISHING BOAT HARBOUR





PERTH CITY



## Vibrant city life

Vibrant. Friendly. Inner city. Instagram-worthy. These are some of the ways our students describe university life at Notre Dame. Located in Fremantle's West End and housed in historic buildings with a café on every corner, it boasts both charm and convenience. Our smaller class sizes and greater access to lecturers are just part of the reason why we are the number one university in Australia for Overall Experience.

Unwind between classes in our refurbished and architecturally-commended student hall or relax at Esplanade Park – a two-minute walk from campus. Bathers Beach is also only a few steps from campus, which makes it the perfect getaway on those long summer days.

## Schools

Featuring heritage buildings and leafy courtyards, Notre Dame's Fremantle Campus provides a welcoming social hub in the heart of historic Fremantle. The University has 53 buildings located in the West End to accommodate our growing student population. The Fremantle Campus is Notre Dame's foundation campus and is home to our Schools of Arts & Sciences, Business, Education, Health Sciences, Law, Nursing & Midwifery, Physiotherapy, and Philosophy & Theology.

## Transport

Minutes from the Fremantle central business district, the campus is a short walk from the Fremantle train station and busport, and a 30-minute train ride to Perth city.



## Fremantle and Perth

At the Fremantle Campus, you can choose between living in the heart of the historic West End, five minutes from the beach, or nearby in either shared or private rental accommodation.

### Residential Halls

Living in a Residential Hall is a great way to meet people from all over the world, including different parts of Australia. Students living in the Residential Halls can participate in activities, excursions and trips that will introduce you to life in Western Australia, including surfing, football games, movie nights, barbecues, social sports and walking tours.

The Residences are located on campus and rooms are not uniform in size – you may be allocated a single or twin room. Bathroom facilities are shared, as are self-catering kitchen facilities. Hall Supervisors will assist you with academic, social and cultural activities, as well as support your safety and health.

Accommodation on the Fremantle Campus is available for the academic year including Summer Term, Semester One, Winter Term and Semester Two. Fees for on-campus accommodation include general utilities and WiFi – for more information, including fees, visit [notredame.edu.au/accommodation](http://notredame.edu.au/accommodation).

### Off campus accommodation

Student Services can provide you with further information to assist in locating off campus housing, including renting a house or apartment in the Fremantle area or renting a room in a shared house with locals or other students.

## Sydney

Notre Dame's Sydney Campus is located in the heart of Sydney, which is an exciting place to live, surrounded by iconic tourist sites, restaurants, entertainment and cafés.

### Off campus accommodation

The University of Notre Dame Australia Sydney Campus does not currently offer accommodation on site. The Student Services team are able to assist you in locating off campus accommodation options close to campus such as private or shared rooms in residential colleges or guest houses, or shared student apartments.

For more information about accommodation visit [notredame.edu.au/accommodation](http://notredame.edu.au/accommodation).







## Approximate living costs are as follows:

	SYDNEY	FREMANTLE
<b>Indicative establishment costs (one-time payments)</b>		
Accommodation bond – usually four weeks rent in advance <i>Note: dependent on number of residents in the accommodation</i>	\$1,200–\$1,600	\$640–\$1,000
Advance rent (usually two weeks in advance)	\$600–\$800	\$320–\$500
Furniture and household goods (for unfurnished accommodation)	\$800–\$1,200	\$800–\$1,200
<b>Weekly expenses</b>		
Rent (shared accommodation)	\$300–\$400	\$160–\$250
Food (eating out and groceries)	\$120	\$120
Public transport – Opal card or SmartRider card	\$40–\$60	\$40–\$60
Bills (utilities, phone, internet) <i>Note – Utilities are sometimes included in rent</i>	\$80	\$80
Laundry	\$10	\$10
Clothing/toiletries/entertainment	\$120	\$120
<b>TOTAL WEEKLY EXPENSES</b>	<b>\$670–\$790</b>	<b>\$530–\$640</b>

Note: According to the Department of Home Affairs, from 23 October 2019, the 12 month cost of living in Australia is estimated at: Student/guardian AU\$21,041; Partner/spouse AU\$7,362; Child AU\$3,152



## Academic support

Throughout your degree, you will have access to a range of programs and opportunities to help you succeed at university. Most support is provided free of charge by the Notre Dame Study Centre and is delivered via workshops and individual appointments with a Learning Advisor. You can join workshops on topics designed to address the challenges common to university life, such as referencing and academic integrity, time management, academic essay writing, critical reading, note-taking, understanding feedback from assessments, and exam anxiety.

## English as an additional language support

If English is not your first language and you need additional assistance to manage your studies in English, you can make an appointment to see a Learning Advisor with specialised skills in English for Academic Purposes. You can make one on one appointments and/or join small study groups to build your skills.

## Mentoring program

To help you as an international student, we will link you with a senior student mentor who will provide you with all the information you need to transition smoothly into Australian university life. It's a great way to meet other students, and to learn about campus life, including how to maximise your opportunities at Notre Dame.

## Access and inclusion

A wide range of support is available for students with disability or equity matters, including the following:

- Changes to examination conditions
- Equipment and assistive technology
- Services such as assistance with note-taking
- Alternative format study materials
- Tailored study skills advice and support in collaboration with a Learning Advisor

## Student wellbeing, safety and support

Notre Dame seeks to be a community that promotes and enhances the wellbeing of every individual student by encouraging them to recognise and develop their own gifts and talents. We also aim to assist students to achieve wholeness as a person, to realise their interconnectedness with others and to understand how they can best serve society. At Notre Dame we are committed to the wellbeing, safety and support of all our students.

## Counselling

Our free and confidential counselling service helps students develop skills and strategies that enable you to achieve your personal and academic goals, making your time at university more comfortable and stress-free.

## Chaplaincy

The Chaplaincy team works to promote, encourage and engage students' faith on campus and to offer the chance for students and staff to flourish and seek excellence beyond measurable academic criteria. Chaplaincy welcomes students of all backgrounds and faiths and those of no faith at all.







# 02

<b>ARTS &amp; SCIENCES</b>	30
<b>BUSINESS</b>	46
<b>LAW</b>	56
<b>EDUCATION</b>	62
<b>PHILOSOPHY &amp; THEOLOGY</b>	70
<b>HEALTH SCIENCES</b>	76
<b>MEDICINE</b>	82
<b>NURSING &amp; MIDWIFERY</b>	88
<b>PHYSIOTHERAPY</b>	94






# ARTS & SCIENCES

Discover endless possibilities with our distinctive  
emphasis on experiential learning and critical thinking.

C H O  
O S E

ARTS &  
SCIENCES





**Shape your future with a strong foundation in the humanities and sciences. Completing a degree in the School of Arts & Sciences will equip you with the skills to solve problems innovatively, communicate with respect and dignity, and adapt with agility.**

- Take advantage of opportunities for work-integrated learning through our internship programs.
- Our graduates are passionate, creative and skilful people who are valued by employers in the private, public and government sectors for their experience and preparation for professional life.
- Tailor your degree to the professional market with flexible learning opportunities across 15 specialist disciplines.

## **Overall Quality of Educational Experience**

**#1 university in Perth**

## **Student Support**

**#1 university in Perth**

## **Learner Engagement**

**#1 university in Perth**

## **Teaching Quality**

**#1 university in Perth**

## **Skills Development**

**Equal #1 university in Perth**

Federal Government Quality Indicators for Learning and Teaching for undergraduate studies in Humanities, Culture & Social Sciences – [compared.edu.au](https://compared.edu.au).

*Felicia*

Behavioural Science student  
from Singapore.

Hear Felicia's story -  
[notredame.edu.au/Felicia](https://notredame.edu.au/Felicia)



## Undergraduate programs

	Why study this degree?	Areas of study	Career opportunities
<b>Bachelor of Arts</b>			
<b>Program Code</b> 3009 <b>CRICOS Code</b> 015324A <b>Duration</b> 3 years full-time <b>Campus</b> Fremantle Sydney <b>Practicum</b> 80-90 hours	<p>Our Bachelor of Arts enables you to major in areas as diverse as history, social justice or English literature, opening up a wide range of career options.</p> <p>In this program, you pursue at least one discipline for the full length of the degree, but you may also choose a second major (eight courses) or a minor (six courses) from within the Arts &amp; Sciences or Business Schools.</p>	<p>Design your degree around a single Major, a double Major or a Major and Minor. Or combine your degree with another degree to complete a double degree. Flexibility is the hallmark of our Bachelor of Arts. See pages 33-37 and the website for details.</p>	<p>Graduates with a Bachelor of Arts work in diverse professions and contexts. See individual Majors for specific examples of career options.</p>
<b>Bachelor of Arts (Architecture)</b>			
<b>Program Code</b> 3570 <b>CRICOS Code</b> 102262G <b>Duration</b> 3 years full-time <b>Campus</b> Fremantle <b>Practicum</b> 90 hours	<p>Architecture enhances people's lives through the creation of meaningful human environments. Many key challenges of contemporary society—such as sustainability, housing affordability, ageing-in-place, city living and community building—often involve spatial issues. Architecture applies a holistic way of thinking and acting to combine creative design processes and technical skills with understandings of human, cultural and environmental issues. Your first step on this journey is our Bachelor of Arts (Architecture) program.</p> <p>This degree allows you to complete a Minor in a complementary discipline alongside your Architectural studies, expanding your career opportunities by providing pathways into professions in addition to the traditional pathway to registration as an architect (after completing the Master of Architecture).</p>	<p><b>Some courses in this program:</b></p> <ul style="list-style-type: none"> <li>Analysing Architecture</li> <li>Vastness Studio</li> <li>Spatial Infrastructure Studio</li> <li>Deconstructing Architecture</li> </ul>	<p>Graduates of the Bachelor of Arts (Architecture) can enter the built environment industry as specialist technical experts and consultants.</p> <p>Architect, after completing a Master of Architecture</p>
<b>Bachelor of Arts (Politics and Journalism)</b>			
<b>Program Code</b> 3026 <b>CRICOS Code</b> 045241M <b>Duration</b> 3 years full-time <b>Campus</b> Fremantle Sydney <b>Practicum</b> 90 hours	<p>If you have a strong interest in both Australian politics and journalism, this program combines the two disciplines into a single program of study, equipping you with the skills to pursue a career in politics, public relations or the media.</p> <p>This program gives you the opportunity to gain practical experience in various forms of journalism, including print, broadcast and online media.</p>	<p>Politics, Democracy &amp; Governance in Australia</p> <p>History of Western Civilisation</p> <p>World Politics</p> <p>Media &amp; Society</p> <p>Journalism: Theory and Practice</p> <p>Setting the Agenda: The Media and Politics</p> <p>Public Relations</p> <p>Media Ethics &amp; Law</p> <p>Online Newsroom</p>	<p>Journalism</p> <p>Media</p> <p>Communications</p> <p>Political advisory</p> <p>Government agencies</p> <p>International organisations</p> <p>Human services</p> <p>Social advocacy</p> <p>Community development</p> <p>Social policy</p> <p>Industrial relations</p>



Why study this degree?	Areas of study	Career opportunities	
<b>Bachelor of Communications &amp; Media</b>			
<p><b>Program Code</b> 3363</p> <p><b>CRICOS Code</b> 073150D</p> <p><b>Duration</b> 3 years full-time</p> <p><b>Campus</b> Fremantle Sydney</p> <p><b>Practicum</b> 90 hours</p>	<p>The Bachelor of Communications &amp; Media lets you explore the principles and techniques of communications and media by examining and creating print, non-print and multimedia texts, using traditional, as well as new and emerging media technologies. You can tailor the program to meet your particular interests by completing a Major in Journalism, Photography, or Film and Screen Production, or do a double Major by combining two of these. Another option is to study one of these Majors and combine it with a Major or Minor in another discipline.</p>	<p><b>Some courses in this program:</b></p> <p>Media and Society</p> <p>Media Ethics and Law</p> <p>Journalism Theory and Practice</p> <p>Screen Production: Skills and Practice</p> <p>Digital Photography</p>	<p>Journalist</p> <p>Digital marketer</p> <p>Sports reporter</p> <p>Director</p> <p>Film maker</p> <p>Production manager</p> <p>Photographer</p>

## Majors & Minors in Arts and Communications & Media degrees

Why study this Major/Minor?	Areas of study	Career opportunities
<b>Advertising</b>		
<b>Available on the Sydney Campus only</b> Advertising requires a unique combination of business acumen, marketing nous and enormous creativity and this Major strives to equip you with all of these attributes. Apart from being competitive, advertising is also one of the most rapidly changing industries, presenting plenty of challenges as well as opportunities for practitioners. You will study topics such as consumer behaviour, integrated marketing, media planning as well as receiving a thorough introduction to the new digital and social media platforms, and opportunities to develop your production and design knowledge.	<b>8 compulsory courses:</b> Principles of Marketing Integrated Marketing Communications Consumer Behaviour Media Planning & Buying Media & Society Production: Creative Advertising Advertising Design: Professional Brief Advertising & Society	Account manager Brand manager Copywriter Creative director Media buyer Promotions and communications

<b>Applied Psychology</b>		
<b>Available on the Sydney Campus only</b> Having a general knowledge of psychology is valuable in many endeavours, and can give you an edge in professions such as teaching, law, business, human resource management, human and community services and administration. Here at The University of Notre Dame Australia, our Bachelor of Arts with a Major in Applied Psychology offers a broad introduction to the science of human behaviour, covering topics such as cognition, belief and work, psychology, counselling and psychological intervention. The demand for expertise in psychology continues to increase as the interaction between human beings becomes more complex, driven by sophisticated technology such as social media.	<b>4 compulsory courses:</b> Introduction to Behavioural Science Themes & Perspectives in Behavioural Science Social Psychology Abnormal Psychology	Community development and service Government departments Non-government organisations Personnel and human resources training

## Majors & Minors in Arts and Communications & Media degrees

Why study this Major/Minor?	Areas of study	Career opportunities
<b>Archaeology</b>		
<p><b>Available on the Fremantle Campus only</b></p> <p>Archaeology is a dynamic worldwide discipline that draws on both the sciences and the humanities to interpret the physical evidence left by humans around the planet. Practitioners use information from geography, history, mathematics, biology, anthropology, chemistry and sociology to process evidence at sites to form the best interpretation about past human behaviour. Understanding behaviour informs our view of modern society and its challenges.</p>	<p><b>Some courses in this Major:</b></p> <p>Reading the Past: Interpretation from Archaeology</p> <p>Maritime Archaeology: Ships and Harbours</p> <p>The Archaeology of Indigenous Australia</p> <p>Unearthing the Past: The History and Archaeology of Western Australia</p> <p>Archaeological Field Methods</p>	<p>Archaeologist</p> <p>Heritage consultant</p> <p>Museum curator</p> <p>Native Title project officer with Aboriginal corporations, non-government organisations (NGOs), resource companies, and government departments</p>
<b>English Literature</b>		
<p>The English Literature Major allows you to explore the powerful and complex development of literature in a variety of contexts and to investigate writing through the ages in a variety of forms including prose, poetry and drama. The Major offers a balanced approach to a diverse range of literature in English, including the works of Shakespeare, Classical and Romantic poetry, and the Victorian novel, as well as children's literature, Australian and Irish literatures and comparative Indigenous literatures.</p>	<p><b>Some courses in this Major:</b></p> <p>Australian Theatre</p> <p>The Art and Craft of Travel Writing</p> <p>Australian Literatures</p> <p>Comparative Indigenous Literature</p> <p>Screenwriting</p>	<p>Editor</p> <p>Copywriter</p> <p>Content marketing manager</p> <p>Writer</p>
<b>Film &amp; Screen Production</b>		
<p>The Film &amp; Screen Production Major integrates theory and practice through an applied study of screen production to provide the creative and artistic tools necessary for emerging filmmakers. You will take hands-on production classes that expand your knowledge in a collaborative environment. Our program is structured to guide you from introductory to advanced screen practices. We offer a range of courses to ensure a holistic knowledge of the craft of screen production. You will engage with multiple forms of drama, documentary and interactive-based screen production.</p>	<p><b>Some courses in this Major:</b></p> <p>Screen Production: Skills and Practice</p> <p>Advanced Screen Production: Drama &amp; Documentary</p> <p>Screenwriting</p> <p>Digital Cultures</p> <p>Digital Media Production</p>	<p>Writer</p> <p>Director</p> <p>Producer</p> <p>Documentary maker</p> <p>Social media content creator</p>

### Why study this Major/Minor?

### Areas of study

### Career opportunities

## History

The History Major allows you to reach an understanding of the historical events, politics, conflicts, cultures, values and traditions which have shaped our modern world. It provides highly relevant and transferable skills, including the ability to research, analyse and communicate effectively. This Major also gives you opportunities to consider such diverse periods and themes as western civilisation, the ancient and medieval worlds, the modern Middle East and Southeast Asia, America in the 1960s, the history of crime, art history and visual evidence.

#### Some courses in this Major:

Of Vice and Virtue: Social Change in Victorian Britain  
The Caesars  
The Kennedys: America in the 1960s  
A History of Crime: Assessing the Evidence  
History and Politics of Southeast Asia  
The Modern Middle East  
The European Middle Ages, c.450-c.1250

Historian  
Intelligence analyst  
Strategic policy writer  
Ministerial and parliamentary liaison officer  
Heritage consultant

## Journalism

The industry-focused Journalism Major teaches you practical and critical skills in print, radio, television, video and online journalism. Along the way, you also learn about the diverse theories that underpin modern journalism practice, your legal and ethical obligations as a journalist as well as developing the confidence to gain employment in the exciting but constantly evolving field of media and communications.

#### Some courses in this Major:

Journalism: Theory and Practice  
Feature Writing  
Digital Cultures  
Setting the Agenda: the Media and Politics

Journalist  
Media producer  
Feature writer  
Publisher  
Photojournalist  
Filmmaker

## Photography

#### Available on the Fremantle Campus only

The Photography Major integrates theory and practice through an applied study of photography to provide the creative and artistic tools necessary for emerging photographers. You will take hands-on production classes that expand your knowledge in a collaborative environment. Our Major is structured to guide you from introductory to advanced photography practices. We offer a range of courses to ensure a holistic knowledge of the craft of photography.

#### 5 compulsory courses:

Digital Photography  
Aesthetics and Practice of Photography  
Studio Photography  
Professional Practice and Exhibition  
Community Photography Portfolio

Photographer: news, sport, travel, fashion, scientific, advertising, portrait  
Photojournalist  
Advertising art director  
Multimedia specialist

## Majors & Minors in Arts and Communications & Media degrees

Why study this Major/Minor?	Areas of study	Career opportunities
<b>Philosophy</b>		
<p>The Philosophy Major fosters philosophical thought which is central to the way we see ourselves and the wider world. The Major provides a detailed introduction to the Western philosophical tradition, from the Ancient World right up until the present day. Along the way, you will grapple with some of the hardest questions in moral philosophy, learn basic philosophical reasoning, and develop a capacity for critical thinking and clear expression.</p>	<p><b>Some courses in this Major:</b></p> <ul style="list-style-type: none"> <li>Logical &amp; Critical Thinking</li> <li>Philosophy of the Human Person</li> <li>Moral Philosophy</li> <li>Aesthetics: Philosophy of Art</li> <li>Epistemology: Ways of Knowing</li> <li>Philosophy of Love and Friendship</li> <li>Natural Law</li> </ul>	<ul style="list-style-type: none"> <li>Policy analyst</li> <li>Researcher</li> <li>Intelligence officer</li> <li>Diplomat</li> </ul>
<b>Politics &amp; International Relations</b>		
<p>The Politics &amp; International Relations Major provides an in-depth introduction to Australia's political history, its decision-making procedures and how we operate on the international stage. You will also learn about the domestic and international events that have shaped the past 100 years.</p> <p>In today's world, there is a growing demand for people who are well informed about local and international politics and who possess the skills to meet the challenges presented by globalisation. This Major will give you the ability to think critically, conduct research thoroughly and communicate effectively.</p>	<p><b>Some courses in this Major:</b></p> <ul style="list-style-type: none"> <li>Politics, Democracy and Governance in Australia</li> <li>Cyber Security</li> <li>Technological Trends and Modern Warfare</li> <li>Terrorism and Violent Extremism</li> <li>The Politics and History of Genocide</li> </ul>	<ul style="list-style-type: none"> <li>Diplomat</li> <li>Politician</li> <li>Electorate officer</li> <li>Political campaign assistant</li> <li>Media advisor</li> <li>Intelligence analyst</li> <li>Policy analyst</li> <li>Human rights worker</li> </ul>
<b>Social Justice</b>		
<p>The Social Justice Major combines several disciplines such as politics, conflict studies, psychology and literature to prepare you to work in the challenging but rewarding area of social justice. Social justice and its pursuit are an important part of any liberal, progressive and democratic society.</p> <p>This Major aims to link social theory with social action and change. You will develop a critical understanding of key concepts of social justice, including the concept of universal human rights.</p>	<p><b>Some courses in this Major:</b></p> <ul style="list-style-type: none"> <li>Living Human Rights</li> <li>Global Development and Justice</li> <li>Peace and Conflict Studies</li> <li>Freedom from Oppression: Literature that Changed the World</li> <li>Political Philosophy</li> </ul>	<ul style="list-style-type: none"> <li>Youth justice case manager</li> <li>Community engagement officer</li> <li>Program manager for community-based not-for-profit organisations</li> <li>Social research officer</li> <li>Human rights worker</li> <li>Aid worker/humanitarian worker</li> </ul>

## Why study this Major/Minor?

## Areas of study

## Career opportunities

### Sociology

#### Available on the Sydney Campus only

The relationship between the individual and society is a complex and constantly shifting one. As a student of Sociology you will examine contemporary issues facing society through a social and historical lens and question common-sense assumptions which are taken for granted. Over the course of your degree you will also gain the tools you need to tackle a host of social problems such as inequality and social exclusion, and the skills to investigate and understand social issues.

#### 4 compulsory courses:

Self and Society  
Social Problems and Solutions  
Research Methods  
Sociological Theory and Method OR Sociology Internship

Social and consumer research  
Social and public policy  
Social welfare  
Advocacy  
Policy  
Education  
Public relations  
Journalism and the media  
Public service

### Theatre Studies

The Theatre Studies Major provides you with an overview of the theatre, its literature and history, and a solid grounding in production work. Through a combination of practical and theory courses, taught by leading academics as well as external professional practitioners, you will develop skills in acting, directing, playwriting, theatre production, and stage management.

#### Some courses in this Major:

Theory and Practice of Modern Theatre  
Fundamentals of Directing  
Australian Theatre  
Drama in the Age of Shakespeare  
Theatre Studies Internship

Actor  
Director  
Screenwriter  
Arts administrator  
TV or film producer  
Community arts worker  
Broadcasting presenter  
Stage and theatre manager

### Theology

Whether you would like to enter ministry or you are on a personal spiritual journey, this Major offers the opportunity to examine the essential teachings and beliefs of the Catholic Church. In this Major you will look at topics such as the sacraments, scripture, liturgy, the prophets and moral theology. Upon graduation, you will have developed a detailed understanding of the complexities of the Catholic faith.

#### Some courses in this Major:

Liturgy: Work of God and Work of God's People  
Eschatology: The living Hope of Christians

Pastoral counsellor  
Parish coordinator

### Writing

#### Available on the Sydney Campus only

Regardless of whether you intend to be a creative author, non-fiction writer or produce textbooks for a specialist audience, the ability to write clearly and effectively is a highly sought after skill in any profession. The Bachelor of Arts (Major: Writing) is an intensive writing degree that will prepare you to research, write and edit a wide range of written materials. During the program you will study everything from literary works to technical journals and websites; looking at the works of others will also allow you to improve the range and depth of your own writing.

#### 3 compulsory courses:

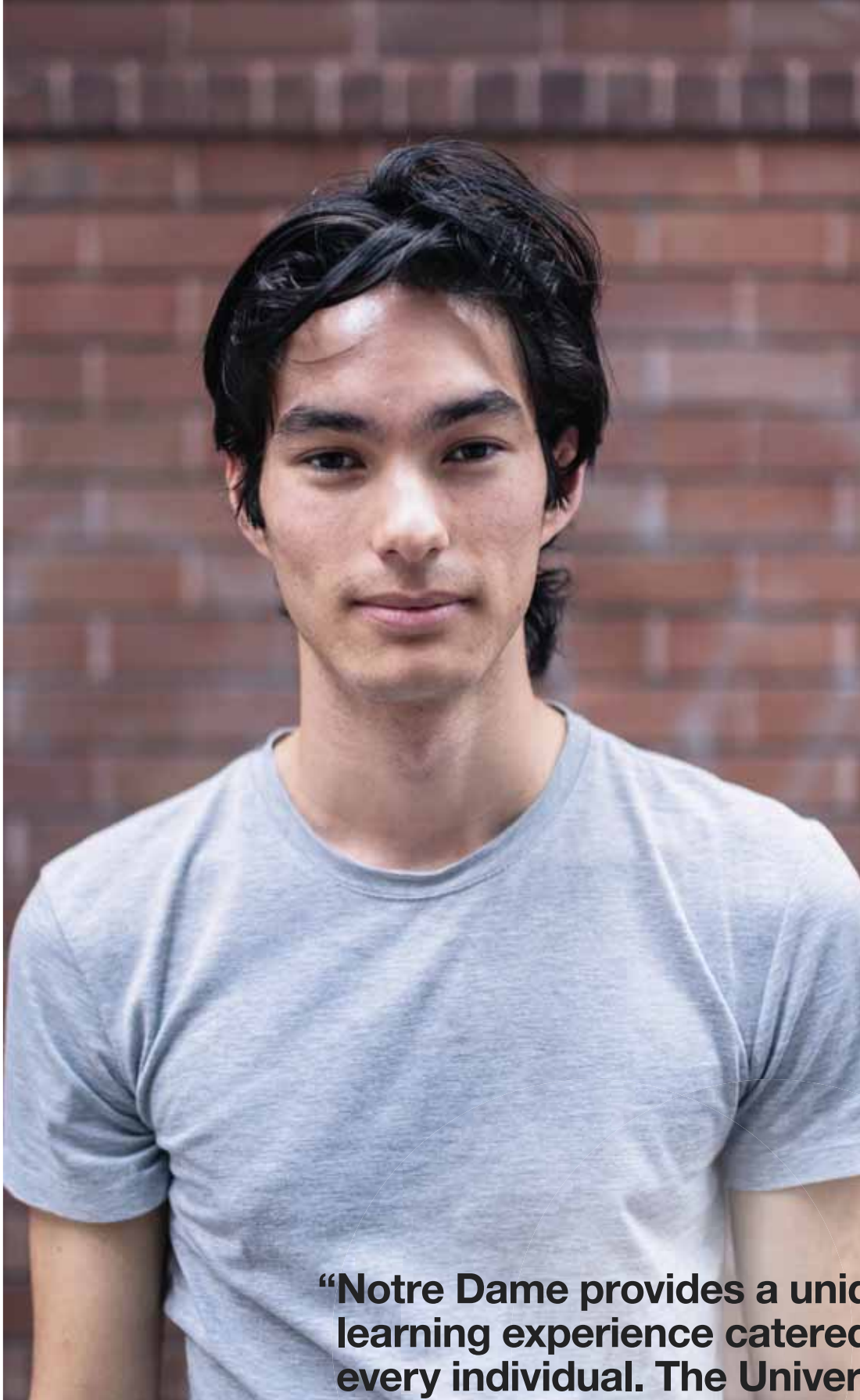
The Western Literary Tradition  
Narrative Writing  
Writing Project  
**Some other courses in this Major:**  
Screenwriting  
Professional Writing  
Feature Writing  
Writing for Performance  
Australian Writer's Workshop

Novelist  
Speechwriter  
Copywriter

## Undergraduate programs

Why study this degree?		Areas of study	Career opportunities
<b>Bachelor of Behavioural Science</b>			
<b>Program Code</b> 3034 <b>CRICOS Code</b> 040261C <b>Duration</b> 3 years full-time <b>Campus</b> Fremantle <b>Practicum</b> 90 hours	<p>Our Bachelor of Behavioural Science equips you with the skills and knowledge to work with those who may be experiencing marginalisation or disadvantage.</p> <p>Depending on your particular specialisation and choice of subjects, employment opportunities are available in a wide variety of industries and fields, including advertising, community development, social impact assessment and health promotion.</p>	Developmental Psychology Aboriginal People Discourse, Power and Politics Organisational Behaviour Culture and Society Psychological Perspectives on Health	Community development Youth work Policy development Corporate liaison
<b>Bachelor of Counselling</b>			
<b>Program Code</b> 3543 <b>CRICOS Code</b> 035277D <b>Duration</b> 3 years full-time <b>Campus</b> Fremantle <b>Practicum</b> 120 hours	<p>The Bachelor of Counselling focuses on the psychosocial, personal and spiritual development of the individual, helping you to develop effective counselling skills for children, adolescents, couples and families, or older people.</p> <p>Upon graduation, you can register as a professional counsellor with the Psychotherapy and Counselling Federation Australia and/or the Australian Counselling Association (ACA).</p>	Theories & Approaches to Counselling Developmental Psychology Aboriginal People Counselling and Children Counselling Adolescents Grief and Loss Counselling Trauma and Addiction Counselling	Youth worker Trauma counsellor Drug and alcohol counsellor Family counsellor
<b>Bachelor of Science</b>			
<b>Program Code</b> 3555 <b>CRICOS Code</b> 045168D <b>Duration</b> 3 years full-time <b>Campus</b> Fremantle <b>Practicum</b> 225 hours	<p>This three-year degree has been designed to prepare you to take on the challenges facing our world today and in the future. You will gain knowledge and skills across several areas of Science, which increases job possibilities, and you will also build depth of learning through a specialist Science stream aligned to your specific interests.</p> <p>You can also form a Minor by combining your chosen stream with courses from a non-science area such as Journalism, Politics, Social Justice, Preventive Health or Business. See the website for the full list of Minors.</p>	<p>In this program you will study compulsory core Science courses to form your chosen Science stream.</p> <p>Design your degree with a Science Major, or add a Minor from Arts or Communications &amp; Media. See pages 40–41 and the website for details.</p>	<p>Career opportunities are diverse and depend on the Science stream you choose.</p> <p>Combining complementary study areas can strengthen career prospects and provide greater flexibility in your options for graduate employment. See individual Science streams and Majors for more career information.</p>





**“Notre Dame provides a unique learning experience catered to every individual. The University encourages you to open your mind and see the world for what it is, not just what society tells you it is.”**

*Alessandro*  
Arts & Sciences student

## Science Streams

Why study this stream?	Areas of study	Career opportunities
<b>Biology &amp; Environment Stream</b>		
<p>An understanding of biology and the environment is at the heart of many significant scientific developments, including solutions to global challenges. This stream equips you with the fundamental skills and knowledge to understand and work with the complexity and diversity of life, from cellular to ecosystem levels.</p> <p>A strong practical focus gives you valuable hands-on experience of plants and animals from aquatic, coastal and terrestrial settings and introduces you to approaches for the management and welfare of our natural environments.</p>	<p>Physical Geography: Climates, Geology and Soils</p> <p>Animal Diversity</p> <p>Plant Diversity</p> <p>Aquatic Science</p> <p>Adaptations for Survival in the Australian Environment</p> <p>Coastal Processes and Planning</p>	<p>Biologist</p> <p>Ecologist</p> <p>Conservation officer</p> <p>Environmental advisor</p>
<b>Environment &amp; Heritage Stream</b>		
<p>Understanding and preserving our natural environment and cultural heritage are essential to maintaining quality of life for current and future generations. In this stream, you will develop the key skills and knowledge required to succeed in doing this.</p> <p>You will be equipped to work with the complexity of environmental systems through the study of ecology, biodiversity, physical geography, natural resource management, environmental impact assessment, and the application of spatial analysis.</p>	<p>Environmental Impact Assessment &amp; Planning</p> <p>Geographic Information Systems</p> <p>Maritime Archaeology: Ships and Harbours</p> <p>Archaeological Field Methods</p> <p>Natural Resource Management</p>	<p>Archaeologist</p> <p>Environment officer</p> <p>Heritage officer</p> <p>Environmental consultant</p> <p>Sustainable development officer</p> <p>Conservation officer</p>
<b>Human and Medical Science Stream</b>		
<p>This stream is ideal for anyone with a passion for understanding the science of the human body and an interest in working in the health industry. Through this stream you will build on the strong scientific foundation established by the core Science courses to gain expertise in anatomy, physiology, biochemistry, microbiology, pathology and neuroscience.</p>	<p>Molecular and Cell Biology</p> <p>Anatomy and Physiology of Body Systems</p> <p>Biochemistry</p> <p>Microbiology</p> <p>Pathology</p> <p>Neuroscience</p>	<p>Science technician</p> <p>Educator</p> <p>Medical representative</p> <p>Research officer</p>
<b>Multidisciplinary Science Stream</b>		
<p>If you are attracted to the idea of being able to move between diverse careers, or if you have a clear, but somewhat unique, idea about your professional future, then you should consider this versatile stream.</p> <p>This stream offers a truly 'liberal science' experience, maximising your breadth of learning in interdisciplinary Science. The flexibility of this stream helps you tailor your program to meet your personal interests, and/or caters for unconventional career trajectories where scientific skills offer an advantage.</p>	<p>See the website for the full range of courses you can study in this stream.</p>	<p>Research and development officer</p> <p>Health researcher</p> <p>Manufacturing analyst</p> <p>Resource sector analyst</p>



## Science Majors

Why study this Major?	Areas of study	Career opportunities
-----------------------	----------------	----------------------

### Archaeology

See page 34 for details about the Archaeology Major.

### Biology

Biology spans the breadth of knowledge and understanding that relates to all life and consequently is at the core of many significant scientific developments. For example, the burden of an expanding global population is driving advances in biotechnology to increase food production. The Major covers a diverse range of subjects – from pollution and ecotoxicology, to animal diversity.

#### Some courses in this Major:

Molecular and Cell Biology  
Plant Diversity  
Aquatic Science  
Adaptations for Survival in the Australian Environment  
Microbiology  
Geographic Information Systems

Biologist  
Ecologist  
Environmental scientist  
Conservation officer  
Education officer

### Environmental Management

The Environmental Management Major tackles important issues such as climate change, urbanisation, and the need for water and food security. The skills and knowledge acquired are relevant to many workplaces, making environmental management a growth employment area.

#### Some courses in this Major:

Australian Ecology: from Theory to Practice  
Environmental Impact Assessment and Planning  
Geographic Information Systems  
Adaptations for Survival in the Australian Environment

Conservation officer  
Environmental officer  
Environmental impact assessor  
Natural resource management officer  
Sustainable development officer

## Double degrees – Arts & Sciences

A double undergraduate degree enables you to complete two qualifications at once, saving time and money while increasing your employment opportunities.

Most double degree combinations can be completed in four years, while double degrees with Law and Education require five years.

### Popular double degrees in our School (completed in 4 years):

- Bachelor of Arts/Bachelor of Behavioural Science
- Bachelor of Science/Bachelor of Arts
- Bachelor of Science/Bachelor of Behavioural Science
- Bachelor of Communications & Media/Bachelor of Arts
- Bachelor of Communications & Media/  
Bachelor of Behavioural Science

### Popular double degrees with other Schools:

#### School of Business (completed in 4 years):

- Bachelor of Commerce/  
Bachelor of Arts or Communications & Media or Science
- Bachelor of Human Resource Management/  
Bachelor of Behavioural Science
- Bachelor of Marketing & Public Relations/  
Bachelor of Communications & Media

#### School of Education (completed in 5 years):

- Bachelor of Education (Primary)/  
Bachelor of Behavioural Science
- Bachelor of Education (Secondary)/Bachelor of Arts

#### School of Law (completed in 5 years):

- Bachelor of Laws/Bachelor of Arts
- Bachelor of Laws/Bachelor of Behavioural Science

## Internships

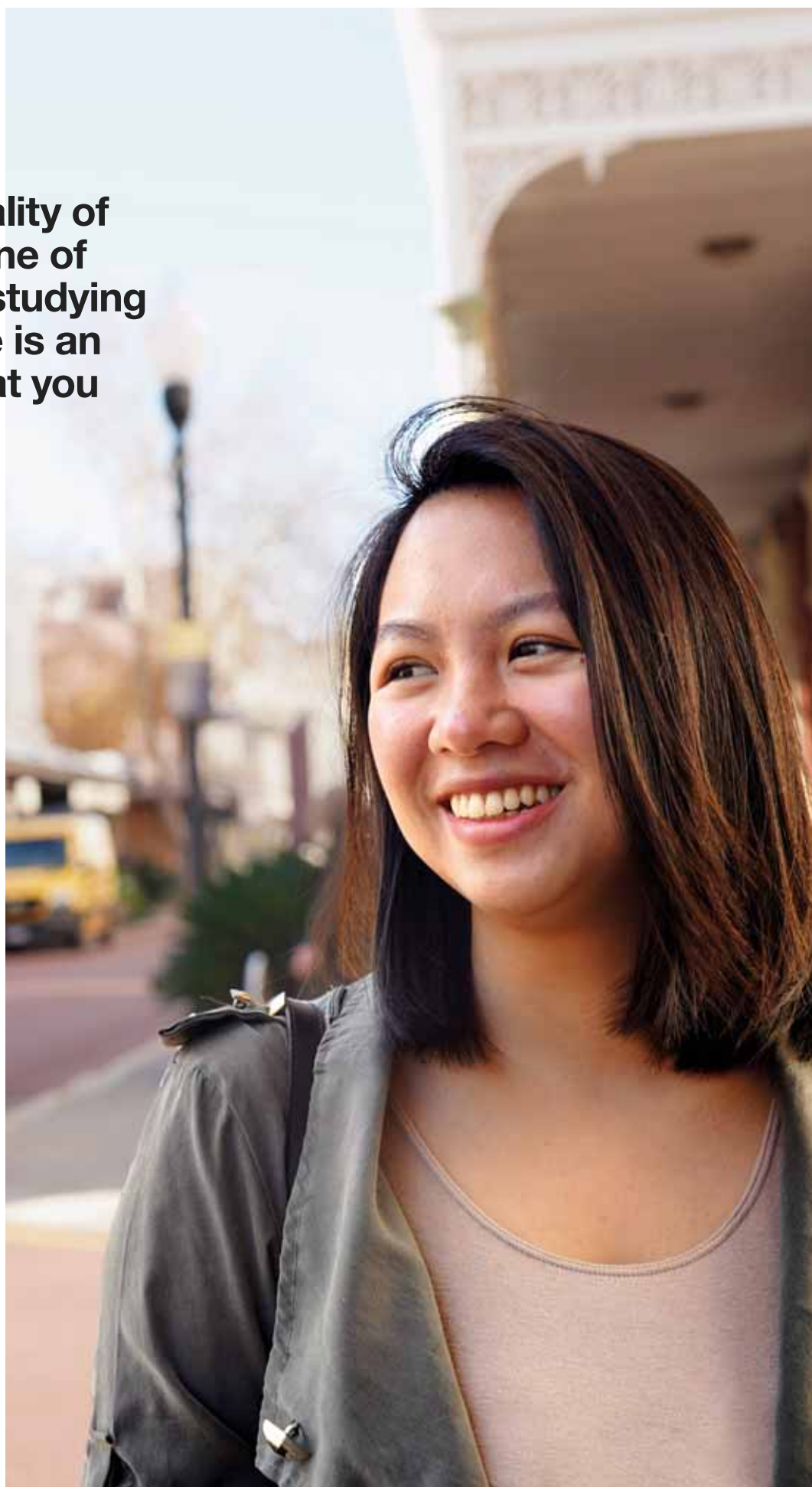
In the final year of your degree, you will have the opportunity to complete anywhere between 80 and 225 hours of industry experience in an organisation of your choice. Past students have completed internships in Federal and State Governments, at not-for-profit organisations, in film and media companies, sporting organisations, marketing and PR agencies, multinational organisations and startups.

[notredame.edu.au/international](http://notredame.edu.au/international)

**“Australia’s quality of education is one of the best, and studying at Notre Dame is an experience that you won’t regret.”**

*May Ann*

Master of Counselling  
student from the Philippines



## Postgraduate programs by coursework

Why study this degree?	Areas of study
<b>Master of Architecture</b>	
<p><b>Program Code</b> 5152</p> <p><b>CRICOS Code</b> 099073J</p> <p><b>Duration</b> 2 years full-time</p> <p><b>Campus</b> Fremantle</p> <p><b>Practicum</b> 360 hours</p>	<p>Notre Dame's Master of Architecture program provides you with a unique education in ethically, socially and environmentally responsible architecture.</p> <p>You will become a part of a small cohort of creative, critically thinking students, studying in an environment embedded in architectural practice. Learn to apply a holistic way of thinking and acting to combine creative design processes and technical skills with understandings of human, cultural and environmental issues.</p> <p>Architectural Contexts: Urbanism &amp; the Living City Ethical Issues in Professional Life Architectural Research Methods Literature Review Research Project</p>
<b>Master of Counselling</b>	
<p><b>Program Code</b> 5023</p> <p><b>CRICOS Code</b> 055386M</p> <p><b>Duration</b> 2 years full-time</p> <p><b>Campus</b> Fremantle Sydney</p> <p><b>Practicum</b> 200 hours</p>	<p>This fully-accredited program, which can be completed over two years of full-time study, combines classroom-based study with hands-on practical counselling experience in the real world.</p> <p>Our Master of Counselling is an innovative program which provides you with the knowledge, skills and competencies required for counselling practice. Fully accredited by the Psychotherapy and Counselling Federation of Australia, the program is made up of a combination of coursework and practical components.</p> <p>Theoretical Approaches to Counselling Approaches to Mental Health Family Systems and Couples Ethical Issues in Professional Life Trauma, Loss and Grief Counselling Developing a Research Proposal</p>



## Higher degrees by research

### Why study this degree?

#### Master of Philosophy (Arts & Sciences)

<b>Program Code</b> 5124	The Master of Philosophy combines up to four coursework subjects with a major research project leading to a thesis or a creative work and exegesis in a specific field of the humanities, social sciences, creative arts and applied sciences.
<b>CRICOS Code</b> 078922B	The research component is an original, systematic and advanced level investigation into a significant question, problem or phenomenon. The topic must be a substantial and original contribution to knowledge.
<b>Duration</b> 1.5 years full-time	You are assigned academic supervisors who provide support, expertise and guidance throughout the coursework and research components of this program.
<b>Campus</b> Fremantle Sydney	Coursework components of this degree include: Developing a Research Proposal, Quantitative Research Methods, Qualitative Research Methods, and Scholarly Reading and Writing.

#### Master of Arts

<b>Program Code</b> 5096	The Master of Arts offers a supervised program leading to a thesis or creative work and exegesis within a specific field of the humanities, social sciences, creative arts or applied sciences.
<b>CRICOS Code</b> 061750A	The degree program is individually designed and built around the methodological requirements of the research, the nature of the topic to be investigated and the expectations of the discipline.
<b>Duration</b> 2 years full-time	The candidate works closely with academic supervisors to undertake a significant and original piece of research, which may include a substantial new discovery or an innovative adaptation, application or interpretation of existing knowledge.
<b>Campus</b> Fremantle Sydney	

#### Doctor of Philosophy (Arts & Sciences)

<b>Program Code</b> 6600	The Doctor of Philosophy (PhD) offers a substantive supervised research program culminating a thesis, or a creative work and exegesis, or publications, in a specific field of the humanities, social sciences, creative arts and applied sciences.
<b>CRICOS Code</b> 011396F	Candidates are assigned academic supervisors who provide support and academic guidance throughout the degree. They assist the candidate with all phases of the degree.
<b>Duration</b> 3 year full-time	A PhD provides graduates with advanced specialist research training and expert knowledge leading to opportunities in a wide range of academic, research and professional contexts.
<b>Campus</b> Fremantle Sydney	

C H O  
O S E

BUSINESS

# BUSINESS

Maximise your career potential with  
an industry-focused degree.





Yukun

Business student  
from China

Read Yukun's story  
[notredame.edu.au/yukun](https://notredame.edu.au/yukun)

**Build a strong commercial grounding across all areas of business and develop the skills to think critically, collaborate, innovate, and act ethically in the face of rapid technological change.**

- Get connected and gain professional skills with access to **150 hours of industry experience** through our business internship program, under the supervision of professionals. The program is designed to complement your study and develop workplace confidence and professional skills.
- Innovate and inspire with an ethically grounded course that promotes strong leadership and sustainable business practices.

## Teaching Quality

**#1 university in Perth & Sydney**

## Learner Engagement

**#1 university in Perth & Sydney**

## Skills Development

**#1 university in Perth & Sydney**

## Overall Quality of Educational Experience

**#1 university in Perth**

## Student Support

**#1 university in Perth**

Federal Government Quality Indicators for Learning and Teaching for undergraduate studies in Business – [compared.edu.au](https://compared.edu.au).

## Undergraduate programs

Why study this degree?	Areas of study	Career opportunities
<b>Bachelor of Accounting</b>		
<b>Program Code</b> 3503 <b>CRICOS Code</b> 085834K <b>Duration</b> 3 years full-time <b>Campus</b> Sydney <b>Practicum</b> 150 hours	Notre Dame's Bachelor of Accounting provides you with the key skills essential for successful accounting professionals. You receive a thorough grounding in all areas of business and a competitive advantage when it comes to gaining employment, as our degrees are fully accredited by CPA Australia, Chartered Accountants Australia and New Zealand (CAANZ), and the Institute of Public Accountants (IPA).	Business Law Economics Auditing Taxation Accounting for Corporate Entities Accounting Theory Financial Markets & Instruments Macroeconomic Theory Microeconomic Theory History of Australian Economics Financial Analysis & Valuation
		Tax accounting Auditing Forensic accounting Business analysis Business management Financial accounting Procurement Not-for-profit Government Startups Bookkeeping
<b>Bachelor of Business Administration</b>		
<b>Program Code</b> 3506 <b>CRICOS Code</b> 089562G <b>Duration</b> 3 years full-time <b>Campus</b> Sydney <b>Practicum</b> 150 hours	The Bachelor of Business Administration is designed to give you a broad overview of the business world and equips you with a range of skills, including marketing, management, public relations and human resources. This industry-focused program combines business theory and real-life projects with Australia's best internship system.	Business Communication Consumer Behaviour Strategic Management Innovation & Entrepreneurship Leadership Theory & Practice Psychology of Work
		Project management Business communication Strategic management Entrepreneur Business operations
<b>Bachelor of Commerce</b>		
<b>Program Code</b> 3058 <b>CRICOS Code</b> 019595A <b>Duration</b> 3 years full-time <b>Campus</b> Fremantle Sydney <b>Practicum</b> 150 hours	Notre Dame's Bachelor of Commerce is designed for ambitious undergraduates who want to gain a wider understanding of today's business environment while specialising in up to two majors. With a strong focus on practical experience, this degree will equip you with the practical and analytical skills for a successful business career.	<b>Eight Business foundation courses</b> Accounting for Business Business Communication Business Information Technology Business Law Economics Principles of Management Principles of Marketing Quantitative Methods for Business
		Graduates with a Bachelor of Commerce work in diverse professions and contexts. See individual Majors for specific career options.



## Commerce Majors

Why study this Major?	Areas of study	Career opportunities
<b>Accounting</b>		
<p>Our Bachelor of Commerce with a Major in Accounting is an accredited degree recognised by Chartered Accountants ANZ, CPA Australia and the Institute of Public Accountants. Initially, you will build the foundations of your business education with subjects such as accounting for business, business communication, business law, economics, and more. Following this, you will specialise with 10 accounting subjects, before having the opportunity to choose two elective subjects.</p>	<p>Accounting for Corporate Entities Advanced Accounting Concepts Auditing Company Law Financial Accounting Managerial Accounting and Control Taxation</p>	<p>Financial controller Chief operations officer Management consultant Accountant</p>
<b>Advertising</b>		
<p><b>Available on the Sydney Campus only</b></p> <p>Advertising has changed vastly over the past few years with the advent of social media and many new digital channels. At the same time advertising has become more fully integrated into the day-to-day activities of many companies.</p> <p>Graduates with both creative and managerial skills are in high demand in many fields of business. This Major has been created to produce job-ready graduates who possess general business skills and expertise in modern advertising techniques.</p> <p>Students benefit from an impressive internship program, visiting speakers, and demanding projects and assignments which will prepare for them for life after university.</p>	<p>Consumer Behaviour Advertising and Promotion Media Planning Media &amp; Society Production: Creative Advertising Advertising &amp; Society Advertising Design: Professional Brief Business Internship</p>	<p>Advertising and promotions Corporate communication Events and entertainment International marketing Management Market research and consulting Marketing Media planning Public relations Recruitment Tourism</p>
<b>Economics</b>		
<p>Our Bachelor of Commerce with a Major in Economics is designed for those students curious about how the world works. Over the course of your studies, you are taught how to use economic reasoning to solve pressing social and business problems. This entails developing much sought-after analytical and empirical skills that enable you to better comprehend a range of topical issues, such as environmental conservation, financial crises, industrial downturns, unemployment, poverty, and appropriate government policy settings.</p>	<p>Advanced Economics Econometrics Intermediate Mathematics for Economics and Finance Macroeconomic Theory and Policy Microeconomic Theory and Policy</p>	<p>Economist Financial analyst Banker Policy advisor</p>

### Commerce Majors

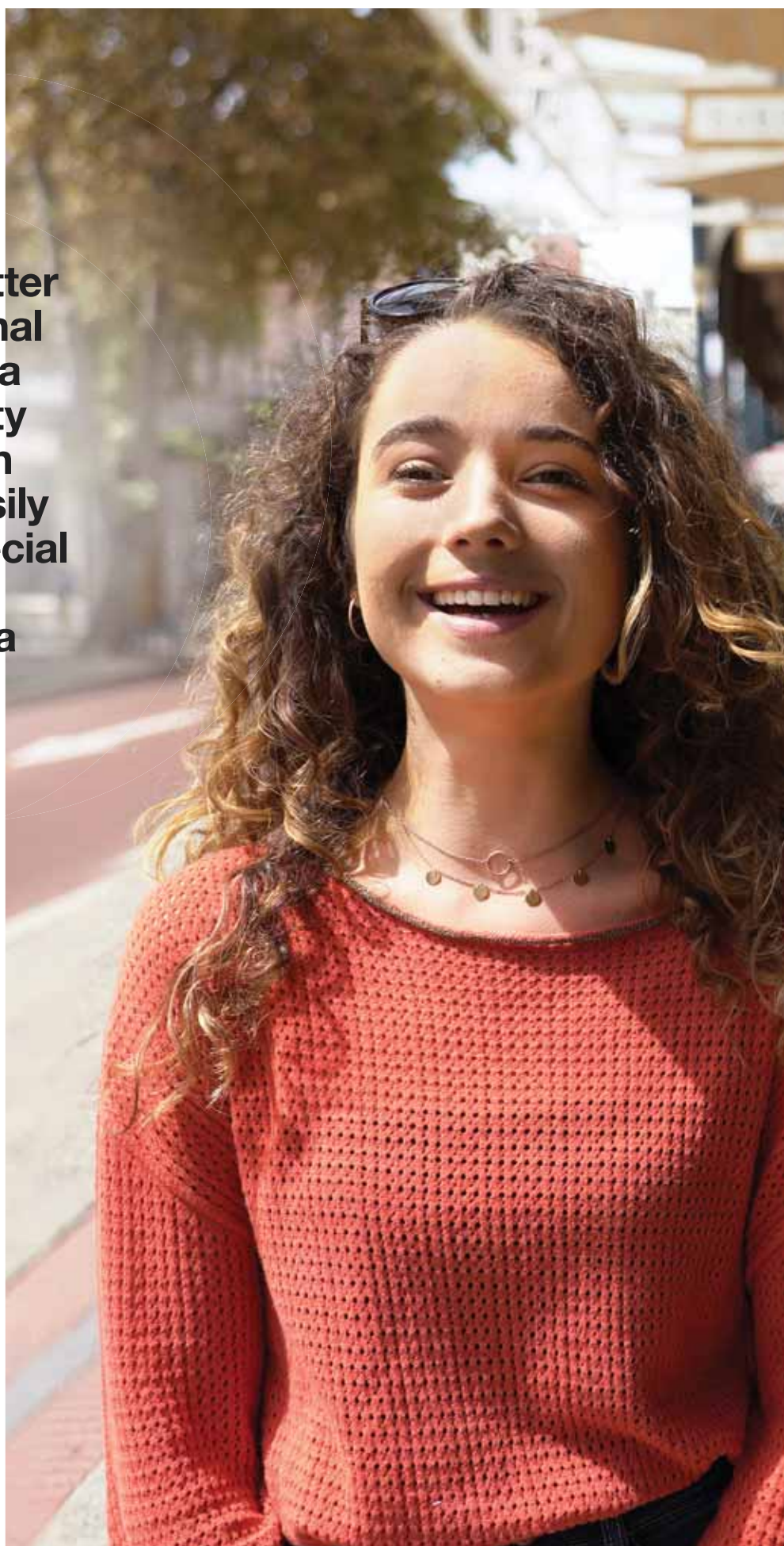
Why study this Major?	Areas of study	Career opportunities
Finance		
More than just dollars and cents, Finance is the study of resource allocation, including the processes, markets, institutions and instruments that facilitate the transfer of money and wealth. When you study our Bachelor of Commerce with a Major in Finance, you will develop strong analytical skills in the planning, management, and control of financial resources.	Corporate Finance Financial Analysis and Valuation International Finance Managerial Finance Principles of Finance Taxation	Banker Financial analyst Stockbroker Securities manager Capital markets manager
Human Resource Management		
In today's rapidly-changing world, many businesses realise that people are their most important asset. In fact, effective human resource management can help an organisation adapt and thrive in a world of rapid and pervasive economic, social and technological change. Our Bachelor of Commerce with a Major in Human Resource Management will teach you how use human resources to maximise productivity and staff happiness at the same time.	Change Management Human Resource Development Human Resource Policy Employment Relations Employment Law Principles of Human Resource Management Organisational Behaviour Strategic Workforce Issues	Human resources manager Recruiter Change management specialist Training and development manager
Management		
If you see yourself in a leadership position, then our Bachelor of Commerce with a Major in Management will provide you with the skills and knowledge that will enable you to maximise your potential as a manager and leader. This program will provide you with a solid foundation in all aspects of business management and leadership in the 21st century. This degree covers areas such as human resources, technology, innovation, international business, organisational development, financial management, strategic management, entrepreneurship and business planning.	Change Management Innovation and Entrepreneurship Leadership: Theory and Practice Managerial Finance Organisational Behaviour Principles of Human Resource Management Strategic Management	Business leader Government advisor CEO or Director Entrepreneur

**“It’s definitely better  
as an international  
student to be in a  
smaller university  
because you can  
meet people easily  
and you feel special  
as an individual,  
rather than just a  
number.”**

*Lola*

Business student  
from France

Read Lola’s story  
[notredame.edu.au/lola](https://notredame.edu.au/lola)



## Commerce Majors

Why study this Major?	Areas of study	Career opportunities
<b>Marketing</b>		
When you study a Bachelor of Commerce with a Major in Marketing, you will receive the benefits of intimate class sizes and passionate educators. As with all programs in the School of Business, we focus on team-based learning and the practical application of skills, all with the aim of producing job-ready graduates. With the marketing landscape constantly changing, professional marketers are challenged to consider new ways of communicating with consumers, harnessing a suite of digital technologies.	Consumer Behaviour Integrated Marketing Communications International Marketing Marketing Research Services Marketing Social Media Strategic Marketing	Advertising executive Social media manager Media manager Event manager Fundraiser
<b>Public Relations</b>		
In a world where companies are expected to operate 24/7, public relations is a fundamental function of any business. As all levels of society come under greater scrutiny, and consumers expect a higher level of integrity and quality control, companies and other organisations must work hard to build and protect their reputations. Our Public Relations Major not only covers the essential business areas of accounting, business law and economics but also equips you with the necessary research, writing and management skills required by today's public relations executive.	Marketing Research Events Management Professional Writing Social Media Issues and Crisis Management	Tourism Public relations executive Event manager NGO advisor Brand manager
<b>Sport &amp; Recreation Management</b>		
<b>Available on the Fremantle Campus only</b> We are dedicated to delivering a high-quality, ethical, and practical education that will prepare our graduates for a successful career in the sport and recreation industry. You will develop essential skills and knowledge in the areas of accounting, marketing, management and communication. In addition you will also specialise in sports and recreation-specific content such as events management, physical activity and health, psychosocial aspects of sport and physical activity, and the Australian sports system.	Change Management Developmental Psychology Environment Approaches to Public Health and Health Promotion Events Management Innovation and Entrepreneurship Strategic Management The Australian Sports System Aboriginal People	Player manager Recreation centre manager Professional sporting club manager Sport and recreation associations Local/regional government councils



## Undergraduate programs

	Why study this degree?	Areas of study	Career opportunities
<b>Bachelor of Human Resource Management</b>			
<b>Program Code</b> 3167  <b>CRICOS Code</b> 040383D  <b>Duration</b> 3 years full-time  <b>Campus</b> Fremantle Sydney  <b>Practicum</b> 150 hours	<p>A Bachelor of Human Resource Management will teach you about the effective management of organisations and their employees through the combination of practical skills and theoretical understanding, enabling you to thrive in the business world.</p> <p>This degree also gives you a competitive advantage when it comes to gaining employment, as our degrees are accredited by the Australian Human Resource Institute.</p>	Employment Relations Change Management Human Resource Development Strategic Workforce Issues Mediation & Dispute Resolution Psychology of Work	Human resources Training and development Strategic management Recruitment consulting Business development Diversity and inclusion advisory
<b>Bachelor of Marketing &amp; Public Relations</b>			
<b>Program Code</b> 3213  <b>CRICOS Code</b> 040391D  <b>Duration</b> 3 years full-time  <b>Campus</b> Fremantle Sydney  <b>Practicum</b> 150 hours	<p>A Bachelor of Marketing &amp; Public Relations is a unique degree, designed to provide you with the knowledge and skills necessary to carry out essential marketing and public relations functions, from branding new products to developing compelling marketing strategies.</p> <p>With a strong emphasis on combining practical skills with individual-focused tuition, you will enter the workforce ready to succeed and thrive.</p>	Events Management Advertising & Promotion Professional Writing Business Research Strategic Marketing International Marketing Corporate Public Relations Issues & Crisis Management E-Marketing	Project management Events management Political advisory Media relations Market research and consulting Campaign direction Issues and crisis management Sponsorship development Corporate reputation management Partnerships Social media strategy
<b>Bachelor of Sport &amp; Recreation Management</b>			
<b>Program Code</b> 3245  <b>CRICOS Code</b> 040393B  <b>Duration</b> 3 years full-time  <b>Campus</b> Fremantle  <b>Practicum</b> 350 hours	<p>Notre Dame's Bachelor of Sport &amp; Recreation Management teaches the skills to manage recreation and sporting organisations, and to adapt and thrive in environments of rapid economic, social and technological change.</p> <p>A strong emphasis on practical experience offers you valuable insights into the sport and recreation industries, creating opportunities to develop your skillset and to build networks.</p>	Events Management Physical Activity and Health Psychosocial Aspects of Sport and Physical Activity The Australian Sports System Accounting Marketing Management and Communication	Player manager Recreation centre manager Professional sporting club manager Sport and recreation associations Local and regional councils

## Higher degrees by research

### Why study this degree?

#### Master of Philosophy (Business)

**Program Code**  
5125

**CRICOS Code**  
078918J

**Duration**  
1.5 years full-time

**Campus**  
Fremantle  
Sydney

Designed for those who have completed their undergraduate program with a high-credit average and demonstrated a potential to complete research-based study, this program combines four coursework subjects with a major research project.

You are assigned two university-based supervisors who provide support and academic guidance throughout the coursework and research components of this program.

Coursework components of this degree include: Quantitative Research Methods, Qualitative Research Methods, Scholarly Reading and Writing, and Developing a Research Proposal.

#### Doctor of Business Administration

**Program Code**  
6100

**CRICOS Code**  
040396K

**Duration**  
3 years full-time

**Campus**  
Fremantle  
Sydney

The Doctor of Business Administration is a research degree designed to meet the needs of professionals who aspire to achieve academic excellence and lead the development of knowledge within their profession.

You will complete a thesis designed to bridge the theory-practice gap and make a practical contribution to a specific area of business administration and professional knowledge.

Coursework components of this degree include: Quantitative Research Methods, Qualitative Research Methods, Scholarly Reading and Writing, and Developing a Research Proposal.

#### Doctor of Philosophy (Business)


**Program Code**  
6102

**CRICOS Code**  
011396F

**Duration**  
3 years full-time

**Campus**  
Fremantle  
Sydney

The Doctor of Philosophy (PhD) is a thesis-based research degree. You will work with a supervisor from the academic staff to develop an appropriate research topic within the focus areas for the School. The PhD program is individually designed and built around the methodological requirements of the research and the nature of the topic to be investigated, taking into account the background of the candidate. Your thesis is expected to be a systematic, written presentation of the results of study, investigation and research, making a substantial and original contribution to the body of knowledge in the subject of the research.



**“I don’t get lost in classes here as I would at a bigger university. The teachers at Notre Dame are always available to help and the smaller classes mean that there is a more one on one focus, leaving me confident about my learning.”**

**Kriti**

Business research student from India

Read Kriti’s story  
[notredame.edu.au/kriti](https://notredame.edu.au/kriti)

## Professional experience

In the final year of your undergraduate degree, you will complete at least 150 hours of practical experience in an organisation of your choice. Past students have interned for multinational organisations, accounting and professional services firms, sporting organisations, governments, not-for-profits, and startups.

## Double degrees

You can combine your Business degree with a degree in Arts or in Law. For more information on Law/Business degrees please visit [notredame.edu.au](https://notredame.edu.au).

CHOOSE

LAW

LAW

Study a law degree grounded in practical legal skills.





*Jacqueline*  
Law student

**Set yourself apart with a degree that provides a thorough knowledge of the legal areas required by the profession, as well as the practical skills required for legal practice.**

- Accelerate your career by taking the opportunity to engage with internship opportunities available on both campuses. Students can work in the Fremantle School of Law Legal Clinic or other community legal centres as part of their degree, with an emphasis on social justice and access to justice. Sydney students can earn credit working in a law firm with a barrister, in the legal team of a corporate or not-for-profit organisation. The Sydney mentoring program additionally offers every Law student the opportunity to be guided by senior legal practitioners such as judges, senior counsel and partners of law firms.
- Pursue a legal career with a globally-focused degree and the opportunity to study and participate in domestic and international legal competitions.
- Graduate with the ethics and professional responsibility required to make a positive impact and be an advocate for change.

## **Teaching Quality**

**#1 university in Perth & Sydney**

## **Overall Quality of Educational Experience**

**#1 university in Perth**

## **Learner Engagement**

**#1 university in Perth**

## **Student Support**

**#1 university in Perth**

Federal Government Quality Indicators for Learning and Teaching for undergraduate studies in Law – [compared.edu.au](http://compared.edu.au).

## Undergraduate programs

Why study this degree?	Areas of study	Career opportunities	
Bachelor of Laws			
<p><b>Program Code</b> 3510</p> <p><b>CRICOS Code</b> 023751D</p> <p><b>Duration</b> 4 years full-time</p> <p><b>Campus</b> Fremantle Sydney</p>	<p>The Bachelor of Laws combines a comprehensive coverage of legal and ethical principles with the skills to apply these principles in legal practice.</p> <p>You focus on developing proficiency in practical areas such as public speaking, advocacy, alternative dispute resolution and commercial practice skills, and can experience the law in practice through mentoring and internship programs.</p>	<p>Legal Research &amp; Writing</p> <p>Legal Process &amp; Statutory Interpretation</p> <p>Legal History</p> <p>Criminal Law</p> <p>Contract Law</p> <p>Torts</p> <p>Equity</p> <p>Property Law</p> <p>Trusts</p> <p>Advocacy</p> <p>Constitutional Law</p> <p>Administrative Law</p> <p>Corporations &amp; Partnerships</p> <p>Evidence</p> <p>Public/Private</p> <p>International Law</p> <p>Civil Procedure</p> <p>Remedies</p> <p>Legal Philosophy</p> <p>Alternative Dispute Resolution</p> <p>Commercial Practice &amp; Ethics</p> <p><b>Examples of elective options offered</b></p> <p>Australian Tax Law</p> <p>Competition &amp; Consumer Law</p> <p>Employment Law</p> <p>Environmental Law</p> <p>Family Law</p> <p>Human Rights Law</p> <p>Indigenous Law</p> <p>Trial Advocacy</p>	<p>Barrister</p> <p>Contracts administration</p> <p>Arbitration</p> <p>Diplomacy</p> <p>Human rights advocacy</p> <p>Solicitor</p> <p>Investment banking</p> <p>Journalism</p> <p>Legal writing</p> <p>Legal editing</p> <p>Lobbying</p> <p>Policy advisory</p> <p>Political analysis</p> <p>Business development</p> <p>Government departments</p> <p>Not-for-profits</p> <p>Consulting</p> <p>Legal counsel</p> <p>Communications</p>

## Double degrees

The degrees offered in the School of Law can be combined degrees from the School of Business, the School of Arts & Sciences, the School of Health Sciences and the School of Philosophy & Theology. The completion of a double degree broadens your education and enhances your employment options.

For more information please visit [notredame.edu.au](https://notredame.edu.au).

## Honours

The Bachelor of Laws features embedded Honours. Each year our most academically successful final year Law students are invited to join the Honours program and to complete a major written research thesis in the place of two coursework electives.

## Accreditation

On completion of any one of our Law degrees and the required Practical Legal Training (PLT), you are eligible to apply for admission as an Australian legal practitioner, which entitles you to practise in New South Wales or Western Australia. You may also apply for admission in all other jurisdictions in Australia and overseas.

Why study this degree?		Areas of study	Career opportunities
<b>Bachelor of Laws (Graduate Entry)</b>			
<b>Program Code</b> 3530 <b>CRICOS Code</b> 072973F <b>Duration</b> 3.5 years full-time <b>Campus</b> Fremantle Sydney	<p>Accredited by the Legal Practice Board of Western Australia, our Bachelor of Laws (Graduate Entry) program is a challenging and practical degree. Upon graduation and the completion of an approved Practical Legal Training program, you are eligible to apply for admission as a legal practitioner in Western Australia and other Australian jurisdictions.</p> <p>The Bachelor of Laws (Graduate Entry) degree is an accelerated program aimed at students who already have a Bachelor's degree in another field. It is designed to be completed as an accelerated program over three years of full-time study, with five subjects taken per semester in the first two years, and four subjects per semester in your final year.</p> <p>The program has been designed in collaboration with eminent judges, senior barristers and leading solicitors to create a curriculum that is both academically challenging and highly practical. In addition, the School of Law continues to call on prominent members of the profession to assist in teaching, adding further to the highly practical nature of legal education at Notre Dame.</p> <p>Through our Legal Clinic, mentoring program, courtroom visits, mooting and internship programs, you are provided with multiple opportunities to experience the law in practice. Furthermore, you cultivate professional legal skills including negotiation, advocacy and alternative dispute resolution within small, interactive class settings.</p> <p>Students are also encouraged to learn outside of the classroom by participating in law competitions and attending professional development events such as the prestigious Eminent Speakers Series. This forum connects students and graduates with leading experts in the discussion of contemporary legal and professional matters.</p>	<p><b>Year One</b></p> <p>Legal Research and Writing Legal Process and Statutory Interpretation Criminal Law A Contract Law A Torts A Criminal Law B Contract Law B Torts B</p> <p><b>Year Two</b></p> <p>Advocacy Equity Property Law A Constitutional Law Corporations and Partnerships Evidence Trusts Property Law B Administrative Law</p> <p><b>Year Three</b></p> <p>Remedies Civil Procedure Legal Philosophy Alternative Dispute Resolution Commercial Practice and Ethics International Law Elective Two Law Electives</p>	<p>Solicitor Barrister Judge's associate Research assistant</p>

## Professional responsibility and ethics

While professional ethics is a mandatory area of study for all Australian Law students, it is a key focus at Notre Dame. We build upon the requirement that Law students study ethics with critical thinking and reflective skills that enable educated participation in law reform and management planning processes.

## Postgraduate program by coursework

### Why study this degree?

### Areas of study

#### Master of Laws

**Program Code**  
5154

**CRICOS Code**  
0101871

**Duration**  
1 year full-time

**Campus**  
Sydney

The Master of Laws focuses on emerging commercial and legal realities in an international context. The degree will enable students to develop in-depth legal knowledge and skills in the areas of international law that they choose. The program also aims to develop a student's skills in advanced independent research and writing, critical analysis, complex problem-solving and reasoning. The program includes a research component with a strong focus on applied legal research. This program is available only to students with prior studies in law in one of the following degrees:

- Bachelor of Laws (Hons); or
- Bachelor of Laws with Graduate Diploma in Legal Practice; or
- Bachelor of Laws degree completed with a high-credit average; or
- Bachelor of Laws degree combined with relevant practical experience; or
- Juris Doctor; or
- International equivalents

This program has a focus on international law but it has been designed to be flexible. Please see our website for all of the LLM courses.

Research Methods  
Directed Legal Research Project  
Ethical Issues in Professional Life

**Electives on offer may include:**

International Environmental Law  
The Legal Environment of the Asia-Pacific Region  
The Philosophy of International Law  
International Human Rights Law  
International Perspectives on Bioethics and the Law  
Law & Religion  
Canon Law

**“All of the lecturers in the School of Law are extremely experienced in their teaching fields and make students feel very comfortable with asking questions.”**

*Andrew*

Law graduate  
from England





## Higher degrees by research

### Why study this degree?

#### Master of Philosophy (Law)

**Program Code**

5128

**CRICOS Code**

078922B

**Duration**

1.5 years full-time

**Campus**

Fremantle  
Sydney

Designed for those who have completed their undergraduate program with a high-credit average and demonstrated a potential to complete research-based study, this program combines four coursework subjects with a major research project.

You are assigned two university-based supervisors who provide support and academic guidance throughout the coursework and research components of this program.

Coursework components of this degree include: Quantitative Research Methods, Qualitative Research Methods, Scholarly Reading and Writing, and Developing a Research Proposal.

#### Master of Laws (Research)

**Program Code**

5044

**CRICOS Code**

073036F

**Duration**

2 years full-time

**Campus**

Fremantle  
Sydney

The Master of Laws is a thesis-based research degree. You will work with a supervisor from the School's academic staff to develop an appropriate topic within the areas of research focus for the School. The program is individually designed and built around the research and the topic to be investigated. A thesis submitted for a Master of Laws is expected to be a systematic, written presentation of the results of study, investigation and research which makes a substantial contribution to the body of knowledge of the law in the relevant area.

#### Doctor of Philosophy (Law)

**Program Code**

6400

**CRICOS Code**

011396F

**Duration**

3 years full-time

**Campus**

Fremantle  
Sydney

The Doctor of Philosophy (PhD) is a thesis-based research degree. You will work with a supervisor from the academic staff to develop an appropriate topic within the research focus areas for the School. The PhD program is individually designed and built around the methodological requirements of the research and the nature of the topic to be investigated, taking into account the background of the candidate. Your thesis is expected to be a systematic, written presentation of the results of study, investigation and research, making a substantial and original contribution to the body of knowledge in the subject of the research.

C H O  
O S E

EDUCATION

# EDUCATION

Inspire future generations with unmatched teaching experience.

The logo for Dion Education graduate, featuring the word "Dion" in a stylized, handwritten-style font.

Education graduate

## Learn through teaching with extensive classroom experience.

- Put your learning into practice and graduate job-ready with at least 27 weeks of professional experience, **one of the highest practicum rates in Australia.**
- Boost your employability globally with an International Baccalaureate teaching and learning certificate embedded within the degree from the only university in New South Wales to gain International Baccalaureate (IB) accreditation for undergraduate primary education.
- Expand your career possibilities across all sectors of education: Independent, Catholic and Government.

## Overall Quality of Educational Experience

**#1 university in Australia**

## Teaching Quality

**#1 university in Australia**

## Skills Development

**#1 university in Australia**

## Learner Engagement

**#1 university in Australia**

Federal Government Quality Indicators for Learning and Teaching for undergraduate studies in Education – [compared.edu.au](https://compared.edu.au).

## Undergraduate programs

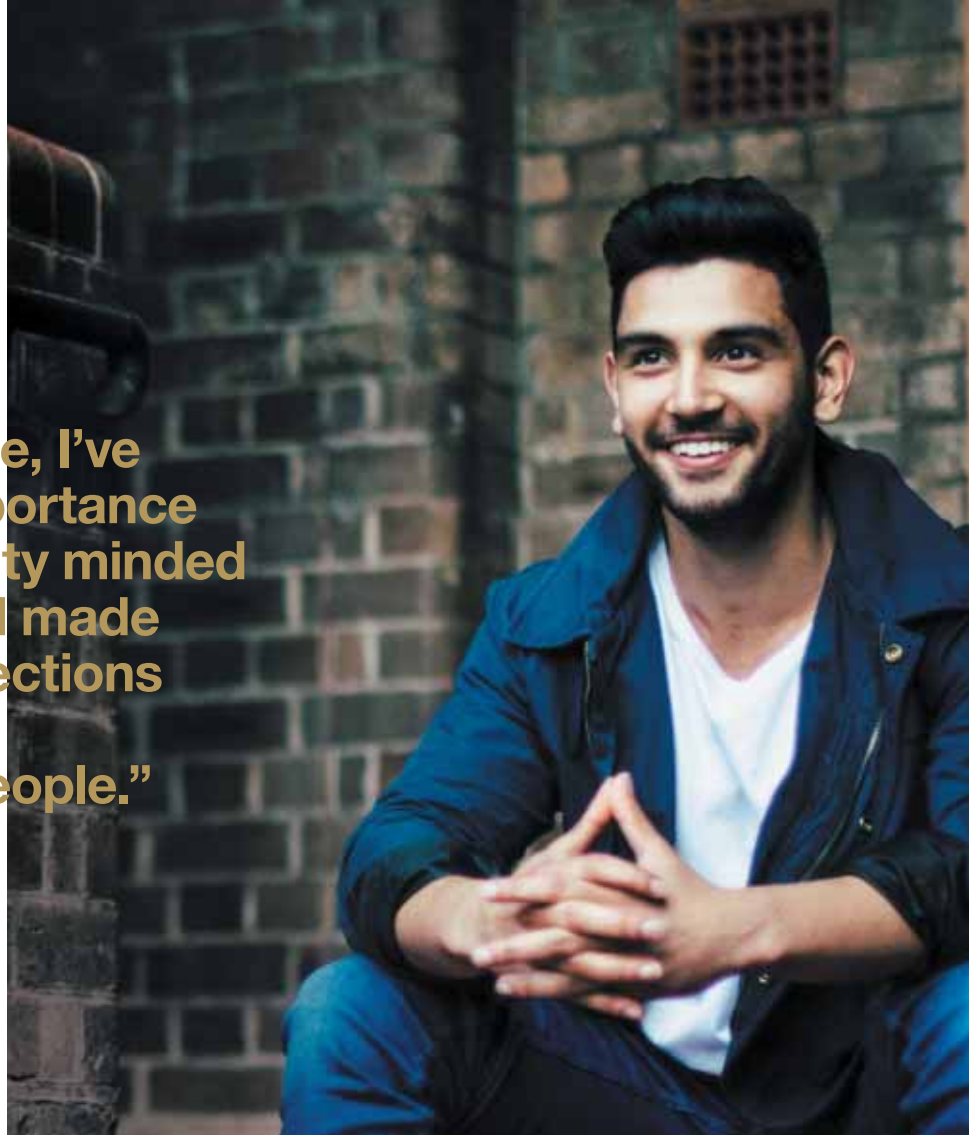
Why study this degree?	Areas of study	Career opportunities
<b>Bachelor of Education (Early Childhood &amp; Care: 0-8 years)</b>		
<b>Program Code</b> 3382  <b>CRICOS Code</b> 073159F  <b>Duration</b> 4 years full-time  <b>Campus</b> Fremantle  <b>Practicum</b> 1280 hours	Our Bachelor of Education (Early Childhood & Care: 0-8 years) provides you with a qualification to work with young children in both childcare and school settings.  This degree includes a workplace component in childcare centres and schools, amounting to 32 weeks over four years, and which counts towards your degree.	Child Development 0-8 Years Creating Learning Environments 0-8 Years Play and Pedagogy: 0-8 Years Transforming Learning Through ICT Science in Early Childhood Catering for Students with Special Needs
		Teaching at Catholic, Independent and Government schools in Australia and other parts of the world Early childhood teaching Early childhood management/directing Training and assessment Development Curriculum development Education policy
<b>Bachelor of Education (Primary)</b>		
<b>Program Code</b> 3114  <b>CRICOS Code</b> 035285D  <b>Duration</b> 4 years full-time  <b>Campus</b> Fremantle  <b>Practicum</b> 1280 hours	In this degree you will complete 32 weeks of supervised teaching, building from two weeks of classroom observation in your first year to a full-term internship in the final year.  In addition to acquiring the academic skills needed to teach in primary schools, you are required to choose one specialist subject area such as Maths, Science, English, Humanities, Special Needs, Service Learning and Social Justice, and Theatre Studies.	Information Literacy Skills for Education Studies Introduction to Teaching and the Curriculum Framework Developmental Psychology Classroom Immersion: Primary (2 weeks professional experience) Mathematics 1: Introduction to Mathematics Teaching and Learning
		Teaching at Catholic, Independent and Government schools in Australia and other parts of the world Early childhood teaching Early childhood management/directing Training and assessment Development Curriculum development Education policy
<b>Bachelor of Primary Education</b>		
<b>Program Code</b> 3476  <b>CRICOS Code</b> 083621F  <b>Duration</b> 4 years full-time  <b>Campus</b> Sydney  <b>Practicum</b> 1080 hours	In this degree you will complete 27 weeks of supervised teaching throughout the program. In addition to acquiring the academic skills needed to teach in primary schools, you can select from specialist subject areas such as Mathematics, Science, Early Childhood and Religious Education.	Academic Skills Learning and Development Mathematics and Numeracy English Language and Literacy Visual Arts Australia and the World
		Teaching at Catholic, Independent and Government schools in Australia and other parts of the world International Baccalaureate teaching Early childhood teaching Early childhood management/directing Training and assessment Development Curriculum development Education policy



**“At Notre Dame, I’ve learnt the importance of a community minded approach and made lifelong connections working with passionate people.”**

*Max*

Education graduate



## International Baccalaureate

The University of Notre Dame Australia is the only university in New South Wales to have International Baccalaureate recognition for an undergraduate primary education degree. By undertaking a program of study with an IB-recognised university, you will:

- Improve the quality of your classroom teaching;
- Demonstrate a deep understanding of and engagement in student learning; and
- Enhance your competitive advantage in the global education job sector.

## Accreditation

The Bachelor of Education programs are fully accredited with the New South Wales Education Standards Authority (NESA) and the Teacher Registration Board of Western Australia. Additionally, the Bachelor of Primary Education (Early Childhood specialisation) is accredited with the Australian Children’s Education and Care Quality Authority (ACECQA).

Those who are accepted into the IB program will be able to apply to the IB for the IB certificate in teaching and learning on successful completion of their undergraduate degree.

## Literacy & Numeracy Testing for Initial Teacher Education students (LANTITE):

All Teacher Education students in New South Wales and Western Australia are required to enrol in, pay for and sit the national Literacy and Numeracy Test for Initial Teacher Education students (LANTITE) and demonstrate the required minimum level of personal literacy and numeracy prior to their final professional experience. Students are encouraged to sit the test early in their degree.

## Undergraduate programs

Why study this degree?		Areas of study	Career opportunities
<b>Bachelor of Education (Secondary)</b>			
<b>Program Code</b> 3126  <b>CRICOS Code</b> 035286C  <b>Duration</b> 4 years full-time  <b>Campus</b> Fremantle  <b>Practicum</b> 1280 hours	<p>The Bachelor of Education (Secondary) is a contemporary degree which combines a strong theoretical framework with plenty of practical teaching experience in the classroom. You will be accredited to teach in two areas of your choice.</p> <p>As well as equipping you to teach in secondary schools across Australia, this four-year degree offers the chance to develop expertise in subjects including English, Maths, History, Drama, Business Studies (including Commerce, Economics and Politics &amp; Law) and Religion.</p>	Literacy, Numeracy and ICT Diversity in Education Learning and Development Academic Skills Foundational Principles of Teaching Inclusive Education	Teaching at Catholic, Independent and Government schools in Australia and other parts of the world Training and assessment development Curriculum development Education policy
<b>Bachelor of Secondary Education</b>			
<b>Program Code</b> 3562  <b>CRICOS Code</b> 083612G  <b>Duration</b> 4 years full-time  <b>Campus</b> Sydney  <b>Practicum</b> 1080 hours	<p>The Bachelor of Secondary Education is a contemporary degree which combines a strong theoretical framework with plenty of practical teaching experience in the classroom. You will be accredited to teach Years 7-12 in two areas of your choice.</p> <p>As well as equipping you to teach in secondary schools across Australia, this four-year degree offers the chance to develop expertise in subjects including English, Maths, History, Drama, Business Studies (including Commerce, Economics and Politics &amp; Law) and Religion.</p>	Literacy, Numeracy and ICT Diversity in Education Learning and Development Academic Skills Foundational Principles of Teaching Inclusive Education	Teaching at Catholic, Independent and Government schools in Australia and other parts of the world Training and assessment development Curriculum development Education policy

## Professional experience

As part of your degree you will complete approximately 27-32 weeks of supervised teaching. Placements begin in Year Two of your degree where you are introduced to teaching and interacting with small groups of pupils and extends into Year Four where you complete an internship.

Your professional experience is combined with rigorous coursework that not only prepares you to teach all key learning areas, but also builds upon both contemporary research and methods, as well as a current understanding of teaching practice.

## Postgraduate programs by coursework

Why study this degree?		Areas of study
<b>Graduate Certificate in Religious Education</b>		
<b>Program Code</b> 4073 (Fremantle) 4115 (Sydney) <b>CRICOS Code</b> 095690E <b>Duration</b> 0.5 years full-time <b>Campus</b> Fremantle Sydney	<p>Our Graduate Certificate in Religious Education is designed for qualified teachers who wish to upgrade their Religious Education skills and qualifications.</p> <p>Using a combination of face-to-face classes and online tuition, this program includes courses such as Christology, the Mystery of Christ, Church and Sacraments, and Critical Issues in Religious Education. You are expected to attend our Fremantle Campus for 26 hours each week during the program, while the online classes can be completed in four hours per week.</p>	Christology Mystery of Christ Church and Sacraments Critical Issues in Religious Education
<b>Master of Teaching (Primary Education)</b>		
<b>Program Code</b> 5143 <b>CRICOS Code</b> 039694K <b>Duration</b> 2 years full-time <b>Campus</b> Fremantle <b>Practicum</b> 800 hours	<p>The Master of Teaching (Primary Education) provides you with 20 weeks of classroom teaching practice which directly contributes to completing your degree. On graduation you will be accredited to teach in all types of primary schools in Western Australia.</p> <p>With its strong emphasis on practical classroom experience, the Master of Teaching (Primary Education) is excellent preparation for primary school teachers.</p>	Inclusive Education Development, Learning and Engagement Ethical Issues in Professional Life Mathematics Specialisation Authentic Assessment Internship and Transition to Teaching
<b>Master of Teaching (Secondary Education)</b>		
<b>Program Code</b> 5144 <b>CRICOS Code</b> 040441K <b>Duration</b> 2 years full-time <b>Campus</b> Fremantle <b>Practicum</b> 800 hours	<p>With its strong emphasis on practical classroom experience, our Master of Teaching (Secondary Education) will qualify you to teach at secondary school level.</p> <p>At Notre Dame, our School of Education covers the complete spectrum of higher education – from the training of new teachers to the continuing professional development of experienced educators and school leaders. To this end, you can expect a strong and supportive mentoring arrangement and coursework that is contemporary, practical and focused on problem-solving.</p>	Inclusive Education Development, Learning and Engagement Literacy and Numeracy across the Curriculum Children of High Ability: Gifted and Talented Positive Learning Frameworks Authentic Assessment Qualitative Research Methods

## Higher degrees by research

### Why study this degree?

#### Master of Philosophy (Education)

**Program Code**  
5126

**CRICOS Code**  
078924M

**Duration**  
1.5 years full-time

**Campus**  
Fremantle  
Sydney

Designed for those who have completed their undergraduate program with a high-credit average and demonstrated a potential to complete research-based study, this program combines four coursework subjects with a major research project.

You are assigned two university-based supervisors who provide support and academic guidance throughout the coursework and research components of this program.

Coursework components of this degree include: Quantitative Research Methods, Qualitative Research Methods, Scholarly Reading and Writing, and Developing a Research Proposal.

#### Doctor of Education

**Program Code**  
6200

**CRICOS Code**  
032064G

**Duration**  
3 years full-time

**Campus**  
Fremantle  
Sydney

The University of Notre Dame Australia is dedicated to building a strong and innovative research culture. The Doctor of Education is a research degree that combines coursework in research training with a thesis of approximately 80,000 words in length.

Previous experience in research is required for your acceptance into this degree, although additional research training is also provided in the coursework component.

Coursework components of this degree include: Quantitative Research Methods, Qualitative Research Methods, Scholarly Reading and Writing, and Developing a Research Proposal.

#### Doctor of Philosophy (Education)

**Program Code**  
6201

**CRICOS Code**  
011396F

**Duration**  
3 years full-time

**Campus**  
Fremantle  
Sydney

The Doctor of Philosophy (PhD) is a thesis-based research degree. You will work with a supervisor from the academic staff to develop an appropriate topic within the research focus areas for the School. The PhD program is individually designed and built around the methodological requirements of the research and the nature of the topic to be investigated, taking into account the background of the candidate.

Your thesis is expected to be a systematic, written presentation of the results of study, investigation and research, making a substantial and original contribution to the body of knowledge in the subject of the research.



Joanne

Education student



# PHILOSOPHY & THEOLOGY

Pioneer new ways of thinking.

C  
H  
O  
S  
E

PHILOSOPHY  
& THEOLOGY





Theology student  
from the Philippines

Hear Jhee's story –  
[notredame.edu.au/jhee](https://notredame.edu.au/jhee)

**Challenge your worldview and tackle humanity's fundamental questions with a degree from the School of Philosophy & Theology.**

- Consider the fundamental questions of human nature and reality, and explore possible answers in a supportive community of scholarship and learning.
- Strengthen your capacity to think deeply and critically, and to give well-reasoned arguments, communicating them clearly and respectfully – skills valued across a variety of professions.
- Learn from expert academics in the Catholic Intellectual Tradition, which prioritises the communal quest for truth and the common good.

**Overall Quality of Educational Experience**

**#1 university in Perth**

**Student Support**

**#1 university in Perth**

**Learner Engagement**

**#1 university in Perth**

**Teaching Quality**

**#1 university in Perth**

**Skills Development**

**Equal #1 university in Perth**

Federal Government Quality Indicators for Learning and Teaching for undergraduate studies in Humanities, Culture & Social Sciences – [compared.edu.au](https://compared.edu.au).



## Undergraduate programs

Why study this degree?		Areas of study	Career opportunities
<b>Diploma of Theology</b>			
<b>Program Code</b> 2007  <b>CRICOS Code</b> 017653A  <b>Duration</b> 1 year full-time  <b>Campus</b> Fremantle	<p>The Diploma of Theology is a one-year full-time program which provides a basic qualification in theology. The program has been designed for students with no previous background in theological studies or those who might wish to update their theological knowledge. It will especially appeal to students who are preparing for a career in ministry or others who are following a personal journey of spiritual discovery and growth.</p>	<p>Scripture Church History Systematic Theology Moral Theology Pastoral Theology</p>	<p>Research institutes Church agencies Education and teaching International diplomacy Journalism and media Pastoral counselling Youth work</p>
<b>Bachelor of Philosophy</b>			
<b>Program Code</b> 3311  <b>CRICOS Code</b> 061708C  <b>Duration</b> 3 years full-time  <b>Campus</b> Fremantle Sydney	<p>The Bachelor of Philosophy program provides a rare opportunity to specialise in Philosophy through the completion of 16 courses in Philosophy (including the three Core Curriculum courses in Philosophy, Ethics and Theology) plus eight electives. When combined with a Master of Teaching, the program provides an ideal qualification for those wishing to teach Philosophy in schools, as well as those wishing to proceed with postgraduate studies. The program offers courses in all areas of Philosophy, including: The History of Philosophy (four courses), Metaphysics, Philosophy of the Human Person, Logic, Epistemology, Ethics, and Political Philosophy. It also includes a number of innovative and rarely offered courses. An Honours year is also available.</p>	<p>The Method &amp; Basic Problems of Philosophy History of Philosophy Critical Thinking Philosophy of the Human Person Epistemology – Ways of Knowing Moral Philosophy Political Philosophy Natural Law Metaphysics Being &amp; God Faith &amp; Reason Philosophy of Science</p>	<p>Advocacy Journalism and media International diplomacy and trade missions Policy development Government administration Academic teaching Public libraries Research institutes Consulting Non-government organisations</p>
<b>Bachelor of Philosophy, Politics and Economics</b>			
<b>Program Code</b> 3573  <b>CRICOS Code</b> 103322C  <b>Duration</b> 3 years full-time  <b>Campus</b> Sydney	<p>The Bachelor of Philosophy, Politics and Economics is designed for those who want to understand human communities and society. The program trains future leaders and professionals to make a difference in all walks of life. Students will learn to integrate knowledge, by focussing on how society can either promote or thwart human flourishing. Philosophy will give the concepts and skills to identify questions and problems, thinking through them clearly and creatively. Studying Politics, students will consider governance, leadership, and the importance of law and policy. Through economics, they will learn to solve a range of problems through economic reasoning. Bringing together these disciplines, graduates will appreciate the central importance of the human person's quest to lead a good life, working with others toward the common good.</p>	<p>Introduction to World Politics Economics Ancient Philosophy Policy, Democracy and Governance in Australia Quantitative Methods for Business Philosophy of the Human Person Public Policy and Practice: The Business of Government Moral Philosophy Microeconomic Theory and Policy</p>	



## Why study this degree?

## Areas of study

## Career opportunities

### Bachelor of Theology

**Program Code**  
3248

**CRICOS Code**  
015330C

**Duration**  
3 years full-time

**Campus**  
Fremantle  
Sydney

The Bachelor of Theology is a three-year full-time degree program leading to a first professional qualification in theology. It is designed to provide students with a comprehensive grounding in Biblical and Theological Studies and associated disciplines. It is intended for those who wish to pursue such studies for reasons of personal growth and especially for those who have specific vocational and ministerial goals, in particular, those who intend to apply for leadership roles in sectors such as education, health and social services.

Sacred Scripture: Old & New Testaments  
Pentateuch  
Prophets & Psalms  
Synoptic Gospels  
Johannine Literature  
Writings of Paul  
Method & Problems of Philosophy  
Philosophy of the Human Person  
Metaphysics – Theories of Being & Existence.

Academic teaching  
Church ministry  
Youth ministry  
Adult faith programs  
Catholic & Christian schools  
Religious education coordination  
Church agencies  
Youth work  
Community & local politics  
Non-government organisations

### Bachelor of Philosophy/Bachelor of Theology

**Program Code**  
3432

**CRICOS Code**  
085835J

**Duration**  
5 years full-time

**Campus**  
Fremantle  
Sydney

The Bachelor of Philosophy/Bachelor of Theology double degree offers a thorough and comprehensive grounding in the principal areas of philosophical and theological studies. The Bachelor of Philosophy is concerned with a critical appraisal of basic presuppositions in all fields of human endeavour. The Bachelor of Philosophy covers Scripture, Church History, Sacramental Theology, Systematic Theology, Moral and Pastoral Theology.

History of Philosophy  
Method & Problems of Philosophy  
Critical Thinking  
Moral Philosophy  
Philosophy of the Human Person  
Metaphysics – Theories of Being & Existence  
Foundations of Catholic Theology  
Early Church History  
Translating Greek/Hebrew/Latin  
Sacred Scripture: Old & New Testaments

Church ministry  
Advocacy  
Academic teaching  
Public libraries  
Research institutes  
Parish adult faith programs  
Federal government agencies  
International diplomacy and trade missions  
Catholic and Christian schools  
Religious education coordination  
Church agencies  
Youth work  
Community and local politics  
Non-government organisations

## Postgraduate programs by coursework

Why study this degree?		Areas of study
<b>Graduate Certificate in Liberal Arts (Philosophy &amp; Theology)</b>		
<b>Program Code</b> 4110 <b>CRICOS Code</b> 095689J <b>Duration</b> 0.5 years full-time <b>Campus</b> Fremantle Sydney	<p>The Graduate Certificate in Liberal Arts (Philosophy &amp; Theology) offers an introduction to the major themes of philosophy and theology, helping you to integrate the fundamental principles of the Core Curriculum into your wider academic work.</p> <p>You are able to find opportunities for spiritual and ethical development, and a chance to learn more about philosophy and theology within the context of the Catholic faith.</p>	Reason and Revelation Philosophy of the Human Person Religion and Love Epistemology Natural Law Political Philosophy
<b>Graduate Diploma of Philosophy</b>		
<b>Program Code</b> 4146 <b>CRICOS Code</b> 089564F <b>Duration</b> 1 year full-time <b>Campus</b> Fremantle Sydney	<p>Our Graduate Diploma of Philosophy has been designed to facilitate skills associated with studying philosophy, and to provide a firm foundation for independent research.</p> <p>This program emphasises the unity of experience, reason, and reasonable discourse, as you explore the foundations of philosophy within the Catholic Intellectual Tradition and practise what it means to lead an examined life.</p>	Aesthetics Philosophy of Science Epistemology Ancient, Medieval, Modern and Contemporary History of Philosophy Logical and Critical Thinking Metaphysics
<b>Graduate Diploma of Theology</b>		
<b>Program Code</b> 4125 <b>CRICOS Code</b> 032058F <b>Duration</b> 1 year full-time <b>Campus</b> Fremantle Sydney	<p>The Graduate Diploma of Theology is designed for those who want to develop their knowledge, or simply grow in understanding and appreciation of their faith.</p> <p>In this program, you bring together faith and reason to pursue a personally enriching program of study, as you learn about Scripture, Church History, Moral Theology and the Sacraments of the Church.</p>	Christology Bioethics Scripture, Liturgy and Spirituality Church History Moral, Pastoral and Systematic Theology Christian Friendship Ministry of Social Justice
<b>Master of Arts (Philosophy)</b>		
<b>Program Code</b> 5139 <b>CRICOS Code</b> 085832A <b>Duration</b> 2 years full-time <b>Campus</b> Fremantle Sydney	<p>The Master of Arts (Philosophy) is designed to facilitate the skills associated with studying philosophy and build a firm foundation for independent research.</p> <p>This course offers you the opportunity to explore subject areas aligned with your own interests, and then to develop these interests via a research project based on a philosophical text.</p>	History of Philosophy Metaphysics Natural Law Philosophy of Love and Friendship Political Philosophy Logical and Critical Thinking

## Why study this degree?

## Areas of study

### Master of Arts (Theology)

**Program Code**  
5138

**CRICOS Code**  
085833M

**Duration**  
2 years full-time

**Campus**  
Fremantle  
Sydney

Our Master of Arts (Theology) is designed for those with an undergraduate degree who wish to undertake further study in theology, while providing a firm foundation for independent research.

This degree asks and offers answers to some of the big questions facing any Christian, such as the nature of God, the origins of human life and the nature of personal identity.

Scripture and Church  
Christology  
Church and Sacrament  
Moral Theology  
Introduction to the New Testament  
The Patristic Tradition  
The Theology and Practice of the New Evangelisation

## Higher degrees by research

### Master of Philosophy (Philosophy & Theology)

**Program Code**  
5129

**CRICOS Code**  
078922B

**Duration**  
1.5 years full-time

**Campus**  
Fremantle  
Sydney

Designed for those who have completed their undergraduate program with a high-credit average and demonstrated a potential to complete research-based study, this program combines four coursework subjects with a major research project.

You are assigned two university-based supervisors who provide support and academic guidance throughout the coursework and research components of this program.

Coursework components of this degree include: Quantitative Research Methods, Qualitative Research Methods, Scholarly Reading and Writing, and Developing a Research Proposal.

### Master of Theology (Research)

**Program Code**  
5115

**CRICOS Code**  
073041J

**Duration**  
2 years full-time

**Campus**  
Fremantle  
Sydney

The Master of Theology enables you to both research how the Church has come to understand the deposit of faith in history, and carry out substantial research of perennial significance within the context of contemporary scholarship.

The Masters Degree by Research is comprised of courses of supervised research which can include research training coursework as appropriate

### Doctor of Philosophy (Philosophy & Theology)

**Program Code**  
6502

**CRICOS Code**  
011396F

**Duration**  
3 years full-time

**Campus**  
Fremantle  
Sydney

The Doctor of Philosophy (PhD) is a thesis-based research degree. You will work with a supervisor from the academic staff to develop an appropriate topic within the research focus areas for the School. The PhD program is individually designed and built around the methodological requirements of the research and the nature of the topic to be investigated, taking into account the background of the candidate.

Your thesis is expected to be a systematic, written presentation of the results of study, investigation and research, making a substantial and original contribution to the body of knowledge of the subject of the research.

You choose to specialise in either Philosophy or Theology, developing robust knowledge about areas of research that are key to inquiry within a Catholic university.



C H O  
O S E

HEALTH  
SCIENCES

# HEALTH SCIENCES

Prevent disease and improve the health of the community.







Brendan

Exercise & Sports Science  
student from Malaysia

## A leading provider of university education in the Health Sciences.

- You gain **valuable professional experience as part of your degree** to support your employment prospects and guide your career aspirations prior to graduation. Placements range from 150 hours in Biomedical Science to 27 weeks in Health & Physical Education.
- Critical thinking is an essential element of all degrees in the School of Health Sciences. This reflective and analytical style of thinking enables you to become an independent thinker and question what you read and hear. It influences how you communicate and how you understand the world you live in.

## Overall Quality of Educational Experience

**#1 university in Australia**

## Skills Development

**#1 university in Australia**

## Student Support

**#1 university in Perth**

## Teaching Quality

**#1 university in Perth**

## Learner Engagement

**#1 university in Perth**

Federal Government Quality Indicators for Learning and Teaching for undergraduate studies in Health Services and Support – [compared.edu.au](https://compared.edu.au).

## Undergraduate programs

Why study this degree?	Areas of study	Career opportunities
<b>Bachelor of Biomedical Science</b>		
<b>Program Code</b> 3041 <b>CRICOS Code</b> 049306M <b>Duration</b> 3 years full-time <b>Campus</b> Fremantle <b>Practicum</b> 150 hours	The Bachelor of Biomedical Science provides you with a strong understanding of advanced scientific investigations, preparing you for a career in a host of health-related fields, including biochemistry, research and biomedical science.  This degree consists of a series of courses designed to develop theoretical and practical skills. The program includes a general introduction to biological science, as well as subject areas including anatomy, microbiology and biochemistry.	Biological Sciences Human Structure & Function Molecular and Cell Biology Health Communications Physical Sciences Anatomy and Physiology of Body Systems Data Analysis and Experimental Design Microbiology
		Biochemist Biomedical scientist Researcher Biomedical sales
<b>Bachelor of Exercise &amp; Sport Science</b>		
<b>Program Code</b> 3161 <b>CRICOS Code</b> 055343M <b>Duration</b> 3 years full-time <b>Campus</b> Fremantle <b>Practicum</b> 300 hours	Our Bachelor of Exercise & Sport Science degree examines the implications of physical activity for public health and also prepares you to work with elite athletes.  As part of the degree, you are exposed to a broad range of applications in the exercise and sport sciences, while learning how they can be applied in the areas of health promotion, rehabilitation, physical education and elite athletic training.  The degree is accredited by the national industry body, Exercise and Sports Science Australia (ESSA). Graduates of an ESSA accredited course are able to work with athletes and sports teams in the areas of exercise and sports science, and strength and conditioning.	Academic Research and Writing in Health Sciences Physical Activity and Health Human Growth and Development Human Structure & Function Applications of Functional Anatomy to Physical Education Exercise Physiology Anatomy and Physiology of Body Systems Health Issues and Preventive Approaches Physiology of Training and Environmental Extremes
		Exercise and sport scientist Strength and conditioning coach Community health and physical activity promoter Sports coach Health and fitness consultant
<b>Bachelor of Health &amp; Physical Education (Primary)</b>		
<b>Program Code</b> 3287 <b>CRICOS Code</b> 057667G <b>Duration</b> 4 years full-time <b>Campus</b> Fremantle <b>Practicum</b> 1080 hours	The Bachelor of Health & Physical Education (Primary) is a four-year specialist teaching qualification. It aims to provide the essential knowledge, practical skills and leadership qualities for future teachers who want to improve the health, wellbeing and physical literacy of young people in our community.  This program combines theoretical and practical elements, helping you to develop your teaching skills through a comprehensive practicum program each year.	Health Communications Physical Activity and Health Human Structure and Function Physiology of Exercise Applications of Function Anatomy to PE Developmental Psychology Motor Development & Learning Psychosocial Aspects of Sport and Physical Activity Sports Events Management for Teachers
		Specialist health and physical education teacher Health education consultant

## Why study this degree?

## Areas of study

## Career opportunities

### Bachelor of Health & Physical Education (Secondary)

**Program Code**  
3288

**CRICOS Code**  
057668G

**Duration**  
4 years full-time

**Campus**  
Fremantle

**Practicum**  
1080 hours

The Bachelor of Health & Physical Education (Secondary) is a four-year specialist teaching qualification. It aims to provide the essential knowledge, practical skills and leadership qualities for future teachers who want to improve the health, wellbeing and physical literacy of young people in our community.

This program combines theoretical and practical elements, helping you to develop your teaching skills through a comprehensive practicum program each year.

Health Communications  
Physical Activity and Health  
Human Structure and Function  
Physiology of Exercise  
Applications of Function  
Anatomy to PE  
Developmental Psychology  
Motor Development and Learning  
Psychosocial Aspects of Sport and Physical Activity

Specialist health and physical education teacher  
Health education consultant

### Bachelor of Outdoor Recreation

**Program Code**  
3310

**CRICOS Code**  
061707D

**Duration**  
3 years full-time

**Campus**  
Fremantle

**Practicum**  
300 hours

Our Bachelor of Outdoor Recreation is an exciting degree designed to meet the growing demand for qualified individuals in the recreation, education, adventure tourism and eco-tourism sectors.

Practical competence and professional standards are at the core of this program, which provides students with extensive practical experience in outdoor leadership in an array of natural environments.

Expeditions on Land  
Expeditions on Water  
Expedition Planning and Implementation  
Health Communications  
Research Methods  
Developmental Psychology  
Physical Geography, Climates, Geology and Soils

Community program organiser  
Adventure tourism leader

### Bachelor of Health Promotion

**Program Code**  
3289

**CRICOS Code**  
057670B

**Duration**  
3 years full-time

**Campus**  
Fremantle

**Practicum**  
300 hours

The Bachelor of Health Promotion focuses on promoting individual and community health and wellbeing. You will develop a clear comprehension of how social and other health determinants impact health and wellbeing as well as understanding the effectiveness of socio-environmental, population and community approaches to health promotion.

Throughout the program you explore the psychological aspects of health behaviour, behavioural aspects of change, health promotion principles, frameworks, planning and implementation, social marketing, principles of community development, project management and health-related research and evaluation.

Graduates will find a wide range of occupations open to them, such as health promotion, community development, health education and health research.

Health Issues and Preventive Approaches  
Population Approaches to Health Promotion  
Community Approaches to Health Promotion  
Health Sciences Research  
Nutrition for Health  
Health and Disease Risk Factors  
Aboriginal People  
Health Education

Health promotion officer  
Community development officer  
Health education consultant  
Health researcher

## Higher degrees by research

### Why study this degree?

#### Master of Philosophy (Health Sciences)

**Program Code**  
5127

**CRICOS Code**  
061767C

**Duration**  
1.5 years full-time

**Campus**  
Fremantle

Designed for those who have completed their undergraduate program with a high-credit average and demonstrated a potential to complete research-based study, this program combines four coursework subjects with a major research project.

You are assigned two university-based supervisors who provide support and academic guidance throughout the coursework and research components of this program.

Coursework components of this degree include: Quantitative Research Methods, Qualitative Research Methods, Scholarly Reading and Writing, and Developing a Research Proposal.

#### Master of Health Sciences

**Program Code**  
5090

**CRICOS Code**  
065272E

**Duration**  
2 years full-time

**Campus**  
Fremantle

In the Master of Health Sciences you explore the importance of early intervention to avoid costly medical treatment and the rehabilitation of those with chronic conditions and musculoskeletal injuries.

In this research degree you will have a minimum of two supervisors who mentor and direct you throughout your studies. Before submitting an application, you are encouraged to contact the School of Health Sciences to arrange a discussion with a suitably qualified member of staff.

#### Doctor of Health Sciences

**Program Code**  
6305

**CRICOS Code**  
074300J

**Duration**  
3 years full-time

**Campus**  
Fremantle

Study under the supervision of leading health academics with our Doctor of Health Sciences.

This research degree is designed to meet the needs of professionals who aspire to achieve academic excellence and pioneer the development of knowledge within their profession. Your research may be undertaken in collaboration with industry or with a professional mentor.

The program examines crucial industry topics while integrating experience with scholarly inquiry, encouraging a systematic way of collecting, analysing and interpreting data.

Coursework components of this degree include: Quantitative Research Methods, Qualitative Research Methods, Scholarly Reading and Writing, and Developing a Research Proposal.

#### Doctor of Philosophy (Health Sciences)

**Program Code**  
6302

**CRICOS Code**  
011396F

**Duration**  
3 years full-time

**Campus**  
Fremantle

The Doctor of Philosophy (PhD) is a thesis-based research degree. You will work with a supervisor from the academic staff to develop an appropriate topic within the research focus areas for the School. The PhD program is individually designed and built around the methodological requirements of the research and the nature of the topic to be investigated, taking into account the background of the candidate.

Your thesis is expected to be a systematic, written presentation of the results of study, investigation and research, making a substantial and original contribution to the body of knowledge in the subject of the research.





**“Notre Dame is special for many reasons: the personal factor, the smaller size of classes, the town setting, and I couldn’t really name any other universities that are a two minute walk from the beach!”**

*Louis*

Exercise and Sports Science  
student from Jersey, UK



CHOOSE

MEDICINE

# MEDICINE

Innovative medical training that emphasises respect, compassion and service.





# MONICA

Medicine student

Read Monica's story  
[notredame.edu.au/monica](http://notredame.edu.au/monica)

One of the most distinctive and sought after medical degrees in Australia, Notre Dame's Doctor of Medicine (MD) program is available to applicants who have already completed an undergraduate degree.

- Graduate with confidence having experienced **over 2,000 hours of clinical training** in hospitals and health services across New South Wales and Victoria.
- Access state-of-the-art facilities including simulation wards, consulting rooms and clinical schools.
- Take full advantage of every opportunity with our small group learning and personal approach, as well as our medically qualified tutors.
- Our Doctor of Medicine degree is recognised by the Australian Medical Council and has wide acceptance internationally.

## Overall Experience

**#1 university in Perth & Sydney**

Good Universities Guide 2020



## Postgraduate program by coursework

Why study this degree?	Areas of study	Career opportunities
<b>Doctor of Medicine</b>		
<p><b>Program Code</b> 5142</p> <p><b>CRICOS Code</b> 095688K</p> <p><b>Duration</b> 4 years full-time</p> <p><b>Campus</b> Sydney</p> <p><b>Practicum</b> Over 2,000 hours of clinical placements and rural experiences</p>	<p>The Doctor of Medicine aims to develop and train excellent, caring and ethical doctors with a respect for human life, dignity and social justice. You will undertake problem-based learning tutorials with medically-qualified tutors, clinical and communication skills sessions, workshops and site visits as well as clinical placements at one or more of seven clinical schools in Sydney, Melbourne, and rural New South Wales and Victoria.</p> <p><b>Essential elements of the Notre Dame Medical postgraduate degree include:</b></p> <ul style="list-style-type: none"> <li>• Access to innovative clinical skills training</li> <li>• Learning from clinical academics who are experts in their fields</li> <li>• Aboriginal health, rural and remote placements</li> <li>• A problem-based learning curriculum delivered in small groups in years one and two</li> <li>• Clinical placements in both the public and private sector hospitals in years three and four</li> <li>• A liberal arts education in bioethics</li> <li>• Applied research project in an area of interest to you</li> </ul>	<p>General practice</p> <p>Surgery</p> <p>Physician</p> <p>Public health</p> <p>Medical education</p> <p>Medical research</p> <p>Government departments</p> <p>Not-for-profit organisations</p>

### Clinical schools

Sydney clinical schools are located at:

- St Vincent's/Mater Health
- Auburn Hospital
- Hawkesbury Health Service

The Melbourne clinical school is located at:

- The Werribee Mercy Hospital

The rural clinical schools are located at:

- Lithgow Hospital
- St John of God Hospital, Ballarat
- Calvary Health Care Riverina, Wagga Wagga

### Accreditation

The Doctor of Medicine program is accredited by the Australian Medical Council as meeting national standards of medical education.



David  
Medicine student





**“The teaching environment at Notre Dame is unlike any other university. The emphasis on wellbeing and personal development has been unique to the teaching, and fundamental to us as growing medical students.”**

**Nikki**

Medicine student

## Higher degrees by research

### Why study this degree?

#### Master of Philosophy (Medicine)

**Program Code**  
5119

**CRICOS Code**  
061767C

**Duration**  
1.5 years full-time

**Campus**  
Fremantle  
Sydney

Designed for those who have completed their undergraduate program with a high-credit average and demonstrated a potential to complete research-based study, this program combines four coursework subjects with a major research project.

You are assigned two university-based supervisors who provide support and academic guidance throughout the coursework and research components of this program.

Coursework components of this degree include: Quantitative Research Methods, Qualitative Research Methods, Scholarly Reading and Writing, and Developing a Research Proposal.

#### Master of Medicine/Surgery

**Program Code**  
5131

**CRICOS Code**  
083626A

**Duration**  
1.5 years full-time

**Campus**  
Fremantle  
Sydney

The Master of Medicine/Surgery is a postgraduate research degree that gives you the opportunity to further your research expertise and make a valuable contribution to the field of medicine.

This degree includes both coursework and a substantial research component, culminating in you submitting a thesis or research dissertation.

#### Master of Science (Medicine)

**Program Code**  
5092

**CRICOS Code**  
078799M

**Duration**  
2 years full-time

**Campus**  
Fremantle  
Sydney

The Master of Science (Medicine) is recommended to enhance your knowledge, develop your career potential, or if you anticipate applying for a Professional Doctorate or Doctor of Philosophy (PhD) in the future.

Your master's is completed by thesis only, and may be undertaken in any area of epidemiology, basic science or clinical research.

#### Doctor of Philosophy (Medicine)

**Program Code**  
6900

**CRICOS Code**  
057673K

**Duration**  
3 years full-time

**Campus**  
Fremantle  
Sydney

The Doctor of Philosophy (PhD) is a thesis-based research degree. You will work with a supervisor from the academic staff to develop an appropriate topic within the research focus areas for the School. The PhD program is individually designed and built around the methodological requirements of the research and the nature of the topic to be investigated, taking into account the background of the candidate.

Your thesis is expected to be a systematic, written presentation of the results of study, investigation and research, making a substantial and original contribution to the body of knowledge in the subject of the research.



**“The course is centred on social justice and they train you to serve where you are needed, and that comes across in our cases, where it is about helping the patient.”**

*Emmanuel*

Medicine graduate  
from Rwanda

C H O  
O S E

NURSING

# NURSING

One of the top Nursing schools in Australia.







Nursing student  
from China

## **Notre Dame's School of Nursing and Midwifery is ranked #1 in the country for Skills Development.**

- With **one of the highest rates of professional experience in Australia (over 1,000 hours)**, our Nursing program will ensure you graduate job-ready.
- Develop your clinical practice and confidence learning in state-of-the-art facilities with expert nurses.
- Expand your career possibilities by undertaking professional workplace experience in a range of clinical settings in major metropolitan, rural and regional centres.
- Learn from experienced academics who are all registered nurses with a broad range of expertise.

## **Skills Development** **#1 university in Australia**

## **Overall Quality of Educational Experience** **#1 university in Australia**

## **Teaching Quality** **#1 university in Australia**

## **Learner Engagement** **#1 university in Perth & Sydney**

Federal Government Quality Indicators for Learning and Teaching for undergraduate studies in Nursing – [compared.edu.au](http://compared.edu.au).

## Undergraduate programs

Why study this degree?	Areas of study	Career opportunities
<b>Bachelor of Nursing</b>		
<b>Program Code</b> 3536* 3571° <b>CRICOS Code</b> *032049G °083619M <b>Duration</b> 3 years full-time <b>Campus</b> *Fremantle °Sydney <b>Practicum</b> *1120 hours °1000 hours	Our highly respected Bachelor of Nursing is regarded as one of the top Nursing programs offered in Australia. This program combines classroom learning with hands-on experience, and places a strong focus on the nurse-patient relationship.  Notre Dame's Nursing degree is comprehensive, exposing students to a wide range of specialisations – this is unique for an undergraduate program.  The program includes over 1,000 hours of full-time professional workplace experience, giving you the opportunity to apply theory to practice.  Students enrolled in the Bachelor of Nursing will be registered with AHPRA as a student nurse.  To be eligible for registration on program completion students must also meet the NMBA Registration standards. These can be found at:  <a href="https://nursingmidwiferyboard.gov.au/Registration-Standards.aspx">nursingmidwiferyboard.gov.au/Registration-Standards.aspx</a>	Primary Healthcare Nursing Practice Mental Healthcare Ethics and Law in Nursing Communication for Nurses Chronic Illness, Rehabilitation and Palliation Aboriginal and Torres Strait Islander Peoples Health  Aged care Primary healthcare Community nursing Critical care Mental health Medical and surgical nursing Palliative care Perioperative nursing Nursing specialty areas

<b>Bachelor of Nursing (Enrolled Nurse Articulation Pathway)</b>		
<b>Program Code</b> 3536* 3571° <b>CRICOS Code</b> 032049G <b>Duration</b> 2 years full-time <b>Campus</b> *Fremantle °Sydney <b>Practicum</b> 800 hours	Designed for Enrolled Nurses who wish to become Registered Nurses, this program includes 400 hours of clinical practice each year, and mentoring by experienced Registered Nurses and healthcare professionals.  If you already hold a Diploma HLT51607, HLT51612 or HLT54115 you are exempt from taking certain courses and can complete the Bachelor of Nursing in two years.	Anatomy Physiology Microbiology Pharmacology Ethics Clinical Reasoning Health Communications Paediatrics Adolescent Health  Aged care Community nursing Critical care Mental health Medical and surgical nursing Nursing specialty areas

### Compulsory program requirements

In order to be eligible to attend Professional Workplace Experience, students must meet mandatory requirements (e.g. immunisations and Working With Children Checks) with the University and the New South Wales and Western Australian Departments of Health. For further information on these, refer to [notredame.edu.au](https://notredame.edu.au).

### Accreditation

The Bachelor of Nursing 3536 is fully accredited by the Australian Nursing and Midwifery Accreditation Council (ANMAC), and as a graduate you will be eligible to register with the Australian Health Practitioner Regulation Agency (AHPRA) and work in a wide range of clinical settings. Notre Dame graduates are highly regarded by the profession and excel in gaining graduate employment.

The Bachelor of Nursing 3571 is not yet accredited by ANMAC or approved by the NMBA and will not lead to registration as a nurse or midwife in Australia under the approved qualification pathway, National Law Section 53a.

### English language requirements

All applicants need to satisfy minimum English language proficiency requirements as outlined in the program tables (page 107) and on the Notre Dame website: [notredame.edu.au/study/admission-requirements/english-language-proficiency-requirements](https://notredame.edu.au/study/admission-requirements/english-language-proficiency-requirements).



**“Notre Dame graduates constantly rank among the best in the state and I can wholeheartedly understand why after experiencing the level of care and support throughout my degree.”**

*Lucas*

Nursing graduate  
from China

### Postgraduate program by coursework

#### Why study this degree?

#### Areas of study

### Graduate Certificate in Contemporary Nursing

**Program Code**

4151

**CRICOS Code**

0101873

**Duration**

0.5 years full-time

**Campus**

Fremantle  
Sydney

**Practicum**

240 hours

This program is designed for nurses re-entering the workforce, internationally educated nurses who are required to undertake a bridging program or nurses seeking to update their knowledge and skills.

Students will explore current and emerging national and regional health priorities, health research, health policy and reform. Medication management, pharmacology and the relationship to physiology and pathophysiology will be addressed. Person centeredness, communication and cultural competence will be explored in both the theoretical and professional practice components of the program. There will also be a focus on caring for Aboriginal and Torres Strait Islander peoples.

Transition to Professional Practice

Contemporary Nursing Skills

Professional Practice

### Graduate Diploma of Midwifery

**Program Code**

4114

**CRICOS Code**

078806F

**Duration**

1.5 years full-time

**Campus**

Fremantle

**Practicum**

1280 hours

This postgraduate program provides the ideal educational environment for Registered Nurses who wish to become midwives.

Classes are deliberately small, with a focus on pastoral care and professional practice experiences in a variety of quality midwifery settings. Possibilities for placements include public and private settings in the city and rural areas, from large teaching hospitals to small healthcare centres.

Midwifery in Complex Situations

Midwifery Emergencies

Woman-centred Care

Midwifery in Primary Healthcare

Legal and Professional Frameworks in Midwifery

Aboriginal and Torres Strait  
Islander Peoples Health: Women  
and Babies



Nadirah  
Midwifery student



## Higher degrees by research

### Why study this degree?

#### Master of Philosophy (Nursing)

**Program Code**  
5118

**CRICOS Code**  
061765E

**Duration**  
1.5 years full-time

**Campus**  
Fremantle  
Sydney

Designed for those who have completed their undergraduate program with a high-credit average and demonstrated a potential to complete research-based study, this program combines four coursework subjects with a major research project.

You are assigned two university-based supervisors who provide support and academic guidance throughout the coursework and research components of this program.

Coursework components of this degree include: Quantitative Research Methods, Qualitative Research Methods, Scholarly Reading and Writing, and Developing a Research Proposal.

#### Master of Nursing (Research)

**Program Code**  
5116

**CRICOS Code**  
073038D

**Duration**  
2 years full-time

**Campus**  
Fremantle  
Sydney

If you have achieved a high-credit average in your undergraduate Nursing degree and wish to complete further research in an area of particular interest, the Master of Nursing (Research) is the ideal program.

You will complete a substantial research project culminating in a thesis, with university-based supervisors on hand to provide support and academic guidance. Government support is available for both domestic and international students.

#### Doctor of Nursing

**Program Code**  
6301

**CRICOS Code**  
052527E

**Duration**  
3 years full-time

**Campus**  
Fremantle  
Sydney

Our Doctor of Nursing is a research degree designed to meet the needs of professionals who aspire to achieve academic excellence and lead the development of knowledge within their profession.

This Professional Doctorate seeks to examine crucial professional topics and integrate industry experience with scholarly inquiry. We recommend you seek the support of a relevant professional body, employer or industry group in defining your research area.

Coursework components of this degree include: Quantitative Research Methods, Qualitative Research Methods, Scholarly Reading and Writing, and Developing a Research Proposal.

#### Doctor of Philosophy (Nursing)

**Program Code**  
6800

**CRICOS Code**  
057674K

**Duration**  
3 years full-time

**Campus**  
Fremantle  
Sydney

The Doctor of Philosophy (PhD) is a thesis-based research degree. You will work with a supervisor from the academic staff to develop an appropriate topic within the research focus areas for the School. The PhD program is individually designed and built around the methodological requirements of the research and the nature of the topic to be investigated, taking into account the background of the candidate.

Your thesis is expected to be a systematic, written presentation of the results of study, investigation and research, making a substantial and original contribution to the body of knowledge in the subject of the research.

# PHYSIOTHERAPY

C  
O  
S  
M

PHYSIOTHERAPY

Study at one of the top Physiotherapy schools in Australia.





Tin Lok

Physiotherapy student  
from Hong Kong

## Notre Dame's School of Physiotherapy is ranked #1 in Australia for Overall Quality of Educational Experience.

- Ensure you graduate job-ready with **one of the most comprehensive professional experiences in Australia** (1,200 hours of clinical practicum).
- Professional placements in hospital and community settings in urban and rural areas.
- Be introduced to clinical practice and contact with patients from your first year.
- State-of-the-art Physiotherapy Gymnasium training facility.
- Learn from experienced academics who are all registered in their respective fields with a broad range of expertise.

## Learner engagement #1 university in Australia

## Overall Quality of Educational Experience #1 university in Australia

## Graduate Employment #1 university in Perth

Federal Government Quality Indicators for Learning and Teaching for undergraduate studies in Rehabilitation – compared.edu.au.



## Undergraduate programs

Why study this degree?	Areas of study	Career opportunities
<b>Bachelor of Physiotherapy</b>		
<p><b>Program Code</b> 3538</p> <p><b>CRICOS Code</b> 045167E</p> <p><b>Duration</b> 4 years full-time</p> <p><b>Campus</b> Fremantle</p> <p><b>Practicum</b> 1200 hours</p>	<p>Our Bachelor of Physiotherapy is a highly practical degree that includes approximately 1,200 hours of clinical practice in laboratories, private practices, hospitals or community health settings.</p> <p>You undertake a comprehensive program focusing on physiotherapy studies, behavioural and health sciences and professional development.</p> <p>Upon graduation, you will be eligible for registration as a physiotherapist with the Australian Health Practitioner Registration Agency (AHPRA).</p> <p>Registration allows graduates to work across all states and territories in Australia and New Zealand and to apply for professional accreditation overseas.</p> <p><b>Some courses in this program:</b></p> <ul style="list-style-type: none"> <li>Developmental Psychology and Mental Health in Physiotherapy</li> <li>Principles of Clinical Rehabilitation</li> <li>Medical Sciences</li> <li>Applied Neuroscience</li> <li>Cardiorespiratory Physiotherapy Sciences</li> <li>Physiotherapy in Paediatrics</li> <li>Musculoskeletal Physiotherapy</li> <li>Clinical Education</li> </ul>	<p>Clinical physiotherapist across any clinical area</p> <p>Physiotherapy researcher</p>
<b>Bachelor of Physiotherapy/Bachelor of Exercise &amp; Sport Science</b>		
<p><b>Program Code</b> 3540</p> <p><b>CRICOS Code</b> 073025J</p> <p><b>Duration</b> 5.5 years full-time</p> <p><b>Campus</b> Fremantle</p> <p><b>Practicum</b> 1400 hours</p>	<p>The Bachelor of Physiotherapy/Bachelor of Exercise &amp; Sport Science is the only program of its kind in Australia. This unique degree is designed to produce well-rounded practitioners who are skilled across the preventive health aspects of physical activity.</p> <p>In order to ensure that you graduate with the practical skills and training necessary to excel, this combined degree contains practicum in both areas.</p> <p>Upon graduation, you will be eligible for registration as a physiotherapist with the Australian Health Practitioner Registration Agency (AHPRA).</p> <p><b>Further to those listed above, some additional courses in this double degree program:</b></p> <ul style="list-style-type: none"> <li>Exercise Physiology</li> <li>Principles of Strength &amp; Conditioning</li> <li>Physiology of Training &amp; Environmental Extremes</li> <li>Health and Disease Risk Factors &amp; Counselling</li> <li>ESS Industry Internship</li> <li>Exercise Biomechanics</li> <li>Motor Control Development &amp; Learning</li> <li>Nutrition for Health &amp; Physical Activity</li> <li>Psychosocial Aspects of Sport &amp; Physical Activity</li> <li>Health &amp; Fitness Assessment</li> </ul>	<p>Clinical physiotherapist across any clinical area</p> <p>Physiotherapy researcher</p>



## Higher degrees by research

### Why study this degree?

#### Master of Philosophy (Physiotherapy)

**Program Code**  
5130

**CRICOS Code**  
061767C

**Duration**  
1.5 years full-time

**Campus**  
Fremantle

Designed for those who have completed their undergraduate program with a high-credit average and demonstrated a potential to complete research-based study, this program combines four coursework subjects with a major research project.

You are assigned two university-based supervisors who provide support and academic guidance throughout the coursework and research components of this program.

Coursework components of this degree include: Quantitative Research Methods, Qualitative Research Methods, Scholarly Reading and Writing, and Developing a Research Proposal.

#### Master of Science (Physiotherapy)

**Program Code**  
5121

**CRICOS Code**  
075783K

**Duration**  
2 years full-time

**Campus**  
Fremantle

This degree aims to expand your knowledge, research skills and intellectual inquiry, culminating in a research thesis.

By developing the Higher Degree by Research student population and external collaborative partnerships, we foster, support and increase research activity and quality. As a research student, you have the opportunity to further your industry experience and make a valuable contribution to Notre Dame's growing research portfolio.

#### Doctor of Physiotherapy (Research)

**Program Code**  
6003

**CRICOS Code**  
075781A

**Duration**  
3 years full-time

**Campus**  
Fremantle

This degree seeks to examine crucial professional topics and integrate industry experience with scholarly inquiry. It aims to generate a research-based approach, providing answers to questions relevant to the industry and encouraging a systematic way of collecting, analysing and interpreting data.

This program provides you with an extension of research training and, through a research thesis, enables you to examine crucial issues and developments within the profession.

#### Doctor of Philosophy (Physiotherapy)

**Program Code**  
6002

**CRICOS Code**  
075782M

**Duration**  
3 years full-time

**Campus**  
Fremantle

The Doctor of Philosophy (PhD) is a thesis-based research degree. You will work with a supervisor from the academic staff to develop an appropriate topic within the research focus areas for the School. The PhD program is individually designed and built around the methodological requirements of the research and the nature of the topic to be investigated, taking into account the background of the candidate.

Your thesis is expected to be a systematic, written presentation of the results of study, investigation and research, making a substantial and original contribution to the body of knowledge in the subject of the research.

# 03

HOW TO APPLY	100
PATHWAYS	102
EARLY OFFER	104
SCHOLARSHIPS & FEES	105
DEGREE TABLES	106
FREQUENTLY ASKED QUESTIONS	110
APPLICATION FORM	111



[illegible]

## Notre Dame's admissions process

### We consider the whole person

Notre Dame uses a comprehensive application process that considers every applicant on an individual basis, making the admissions process, like the Notre Dame study experience, focused on the whole person. **There is no application fee.**

A student visa is required if you have applied for and been accepted to study full-time, on campus for over three months at an educational institution in Australia.

If you have any queries please contact the relevant International Office:

**International Office,  
Fremantle**  
international@nd.edu.au  
+61 8 9433 0873

**International Office,  
Sydney**  
international@nd.edu.au  
+61 2 8204 4229



## 01 Apply

### Submit your application

You can apply to The University of Notre Dame Australia online at [notredame.edu.au/international/how-to-apply](https://notredame.edu.au/international/how-to-apply). Alternatively, completed application forms, together with all requested documentation, can be sent to a registered education agent in your country. A list of registered education agents of the University can be found at [notredame.edu.au/international/agents](https://notredame.edu.au/international/agents).

A receipt will be emailed to you once your application is lodged. Applications are reviewed to determine eligibility to progress to an offer.

## 02 Offer

### Receiving an offer

Offers are made on a rolling basis.

You will be notified of offers via email along with your first semester invoice and other important information on how to accept your offer, and moving to Australia.

# Your edu





## 03

### Accept

#### Accepting your offer

If you receive an offer from Notre Dame, you can choose to accept, defer or reject the offer.

You do this by completing the 'Conditions of Offer & Acceptance Form' provided in the offer email accompanied by your invoice payment.

Please call or email the International Office on +61 8 9433 0873 or [international@nd.edu.au](mailto:international@nd.edu.au) if you have any questions regarding your offer.

## 04

### Enrol

#### Confirmation of Enrolment

Once the International Office has received your indicative invoice payment, you will receive an electronic Confirmation of Enrolment (eCoE) which you will use to apply for your student visa (if applicable).

The International Office will then get in touch with you to organise your enrolment, including preparing your move to Australia (if applicable).

## 05

### Orientation

#### Orientation Week

Orientation Week is a fun, festival-like event and is an opportunity to meet fellow students and get involved in student life at Notre Dame.

Orientation Week is compulsory for international students studying on campus in Australia, as it contains important information sessions which will help set you up for success during your studies at Notre Dame.

# cation of a lifetime starts here.

### English language entry requirements

The University requires applicants to demonstrate English language competency of the appropriate level stipulated for their nominated program. Successful completion of specified secondary or tertiary education in English may be used to demonstrate competency, depending on your chosen program.

Accepted proficiency tests are Academic International English Language Testing System (IELTS), Teaching of English as a Foreign Language (TOEFL), Cambridge Academic English (CAE), Pearson Test for English, Academic (PTE) or Occupational English Test (OET). Note that not all tests can be used to prove English language proficiency for all programs.

The International Office reserves the right to ask any applicant to sit an English language proficiency test.

Please note some programs require a proof of higher English language proficiency (Medicine, Education, Nursing, Law and Physiotherapy). For more details of the scores required for each program, please refer to the program tables on pages 106-109, visit [notredame.edu.au/study/admission-requirements/english-language-proficiency-requirements](https://notredame.edu.au/study/admission-requirements/english-language-proficiency-requirements) or contact [international@nd.edu.au](mailto:international@nd.edu.au).



## Pathways at Notre Dame

### Academic English bridging programs (ELICOS)

Notre Dame provides three Academic English bridging programs on the Fremantle Campus, which are designed to develop language proficiency and assist students in meeting the University's English language requirements for entry into their nominated undergraduate or postgraduate program.

Upon successful completion of Notre Dame's Academic English bridging programs, no further English language testing will be required, except where required by an accrediting body, or for a program requiring a higher English language score.

**Academic English Bridging Level 1 (AEB1)** is a 15-week program designed for students arriving at an English language level equivalent of IELTS 6.0. Successful completion of the program will enable entry into undergraduate and postgraduate courses with an English language entry requirement of IELTS 6.5 or equivalent.

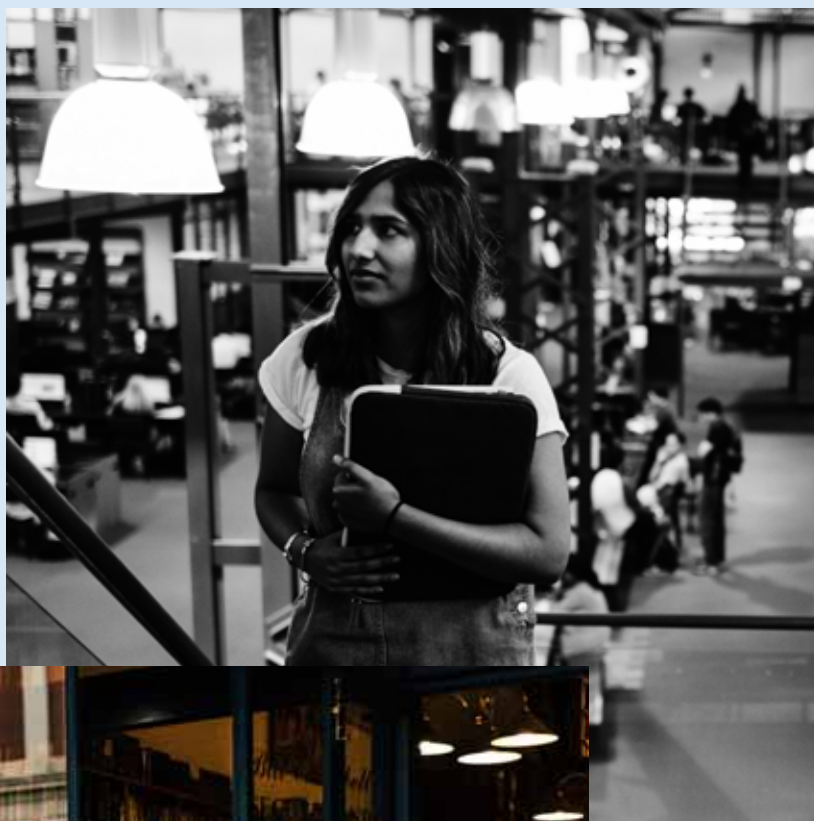
**Academic English Bridging Level 2 (AEB2)** is a 15-week program of study designed for students arriving at an English language level equivalent of IELTS 6.5. The program is available to students requiring Upper Intermediate/Advanced level English language instruction for academic purposes.

Successful completion of the 15-week program will enable entry into programs with an English language entry requirement of IELTS 7.0 or equivalent (except Nursing where an IELTS test or equivalent will still need to be taken).

**Academic English Bridging Study Skills (AEB Study Skills)** is an intensive five-week program focused on providing you with discipline-specific language skills. The program will prepare you for academic life and study as well as acquainting you with current teaching and learning methodologies typically used within an Australian university setting.

This program is suitable for students who seek entry into an undergraduate or postgraduate program where they have one or more bands lower than the overall IELTS score required for entry and/or have prior academic and life/work experience that indicates they would benefit from undertaking this course for successful transition into university studies.





## Off-campus pathways to Notre Dame

We understand that some students applying to study at Notre Dame may need to first study with one of our academic or English language pathway providers. The pathway providers listed below are recommended by us because of their commitment to a quality student experience and have agreements with Notre Dame, which means that we will be able to provide you with packaged offers for the purpose of your application for your student visa.

### Academic Pathway providers

**Canning College**  
[www.canningcollege.wa.edu.au](http://www.canningcollege.wa.edu.au)

**Anglican Schools Commission**  
[www.asc.wa.edu.au](http://www.asc.wa.edu.au)

**TAFE International Western Australia (TIWA)**  
[www.tafeinternational.wa.edu.au](http://www.tafeinternational.wa.edu.au)

### English Pathway providers

**Language Links**  
[www.languagelinks.wa.edu.au](http://www.languagelinks.wa.edu.au)

**Perth International College of English**  
[www.pice.com.au](http://www.pice.com.au)

**KAPLAN International**  
[www.kaplaninternational.com](http://www.kaplaninternational.com)

Preparatory courses and the tests can be accessed through the providers listed above. For more information about English language proficiency for specific programs see [notredame.edu.au/study/admission-requirements/english-language-proficiency-requirements](http://notredame.edu.au/study/admission-requirements/english-language-proficiency-requirements).

For more information on pathways to Notre Dame, visit [notredame.edu.au/international/study-at-notre-dame-australia/pathways](http://notredame.edu.au/international/study-at-notre-dame-australia/pathways).

## Change your perspective with an Early Offer.



This exclusive program is open to international high school students who have demonstrated academic excellence and/or are making a significant contribution to their school or community.

You can demonstrate this by your school reports, exam results and active contribution to school or community, work achievements and by telling us about your personal or leadership qualities.

### Selection criteria

Selection will be based on academic achievement in a completed secondary school leaving qualification (Australian Year 12 or equivalent), along with other supporting documents provided as part of the application process to study at the University.

### Early Offer Scholarships

The University of Notre Dame Australia offers multiple International Early Offer Scholarships to provide tuition assistance to high-achieving international students enrolling in undergraduate programs.

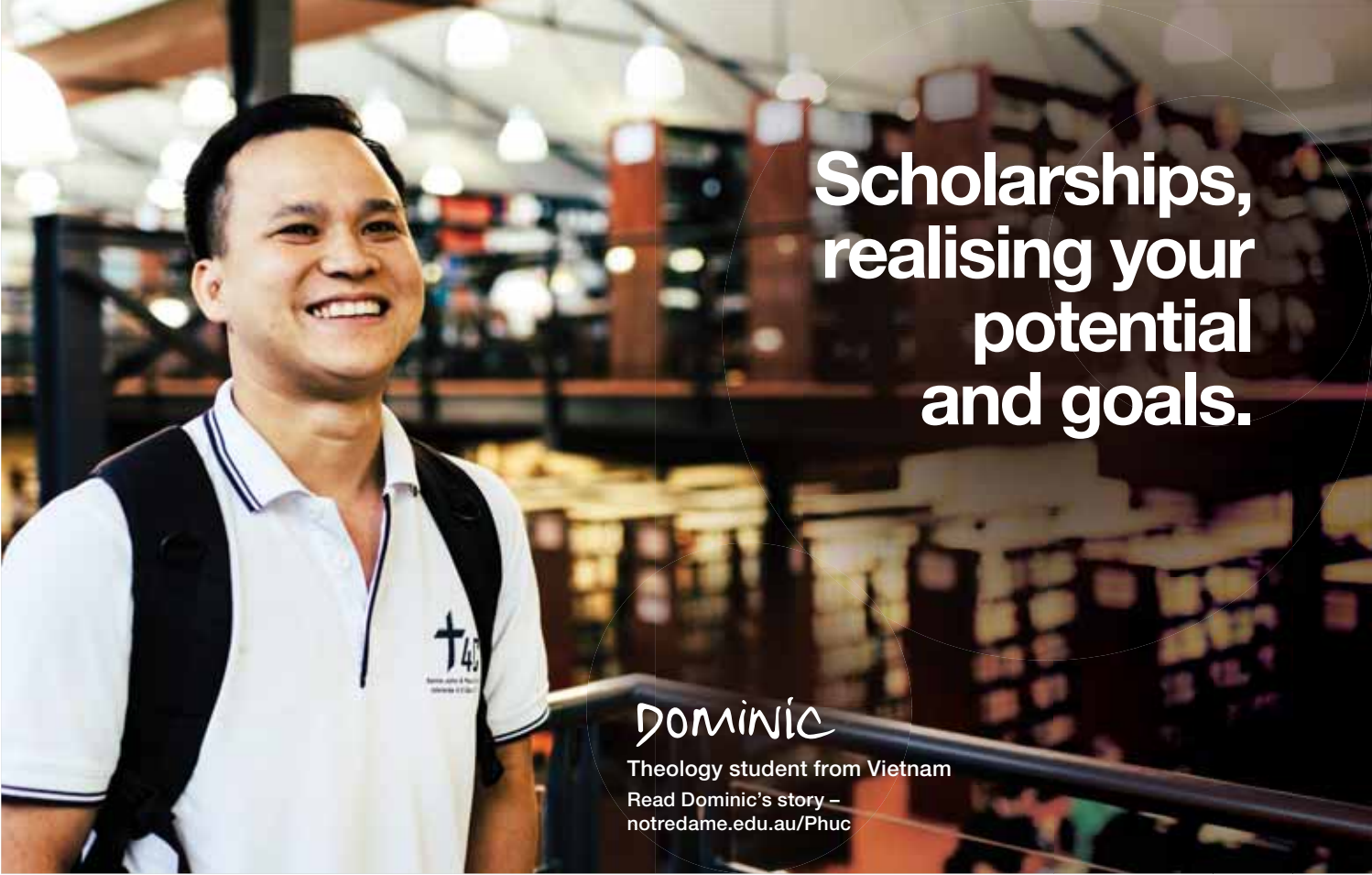
The value of an Early Offer Scholarship is 25 percent (25%) of annual tuition fees for up to a maximum of one (1) year or two (2) consecutive semesters.

*The Scholarship is awarded as a partial tuition fee waiver and does not cover costs such as living expenses, accommodation, transport, overseas student health cover or any other costs associated with study.*

**IT'S ALL HERE.**

[notredame.edu.au/study/early-offer](https://notredame.edu.au/study/early-offer)





# Scholarships, realising your potential and goals.

**DOMINIC**

Theology student from Vietnam

Read Dominic's story –  
[notredame.edu.au/Phuc](http://notredame.edu.au/Phuc)

## Fees

Notre Dame is committed to making its programs as affordable and accessible as possible, with its fee structure reflecting this goal.

Please note, tuition fees are subject to change and increase each year. Please refer to the University website for the most up-to-date indicative fees information for international students: [notredame.edu.au/international](http://notredame.edu.au/international).

## Additional study costs

Some programs have additional costs associated with them. These may vary dependent upon the individual courses chosen. These costs are in addition to tuition fees. Examples of incidental (non-tuition) fees include uniforms, specialist equipment, field trips and immunisations. To view the incidental (non-tuition) fees for a program please visit [notredame.edu.au/international/fees](http://notredame.edu.au/international/fees).

## Refund Policy

The Refund Policy applies to all commencing and continuing international students.

The Policy is subject to change. The most up-to-date information can be obtained from the University website: [notredame.edu.au/about/policies/student-policies](http://notredame.edu.au/about/policies/student-policies).

If you have any enquiries please contact [international@nd.edu.au](mailto:international@nd.edu.au).

## Scholarships

### Notre Dame Australia International Merit Scholarships

These Scholarships provide tuition assistance to international students enrolling in an eligible undergraduate or postgraduate coursework program at Notre Dame.

The value of the Scholarship is 25 percent (25%) of annual tuition fees\* for the duration of the program.

### International Undergraduate Academic Merit Scholarships

These Scholarships waive 20% of annual tuition fees\* for undergraduate programs for high-achieving students.

### AUSMAT Scholarships

Provide tuition assistance to international students currently studying the Australian Matriculation (AUSMAT) program and enrolling in undergraduate programs at Notre Dame.

The value of the Scholarship is 25 percent (25%) of annual tuition fees\* for up to a maximum of one (1) year or two (2) consecutive semesters.

### The Malaysian Australian Alumni Council (MAAC) Scholarship

Provides tuition assistance to a Malaysian student enrolling in an undergraduate program at Notre Dame.

The value of the Scholarship is 25 percent (25%) of annual tuition fees\* for up to a maximum of one (1) year or two (2) consecutive semesters.

For more information, including Terms and Conditions, visit [notredame.edu.au/international/fees](http://notredame.edu.au/international/fees).

\*These are tuition waiver scholarships, and as such, do not cover the costs associated with living expenses, accommodation, transport, overseas student health cover or other costs associated with study.

No Scholarship application form is required for these Scholarships, as eligible applicants are automatically nominated for consideration by the selection committee.

### Undergraduate degrees

	PROGRAM CODE	CRICOS CODE	FREMANTLE	CAMPUS SYDNEY	DURATION (YEARS)	INTAKE	2021 INDICATIVE ANNUAL FEE (A\$)	ENTRY REQUIREMENTS				
								IELTS (ACADEMIC) *	ATAR	WAUFP GCE	GCE-A LEVELS	INTERNATIONAL BACCALAUREATE
<b>SCHOOL OF ARTS &amp; SCIENCES</b>												
Bachelor of Arts	3009	015324A	●	●	3	Feb/July	\$29,000	6.5	70	53	5	24
<b>Majors and/or Double Majors</b> (S = Sydney only; F = Fremantle only):												
<ul style="list-style-type: none"> <li>Advertising (S)</li> <li>Applied Psychology (S)</li> <li>Archaeology (F)</li> <li>Behavioural Science (F)</li> </ul>	<ul style="list-style-type: none"> <li>Counselling (S)</li> <li>English Literature</li> <li>Environmental Management (F)</li> <li>Film &amp; Screen Production</li> </ul>	<ul style="list-style-type: none"> <li>History</li> <li>Journalism</li> <li>Philosophy</li> <li>Photography</li> </ul>	<ul style="list-style-type: none"> <li>Politics &amp; International Relations</li> <li>Social Justice</li> <li>Sociology (S)</li> <li>Theatre Studies</li> </ul>	<ul style="list-style-type: none"> <li>Theology</li> <li>Writing (S)</li> </ul>								
Bachelor of Arts (Architecture)	3570	102262G	●	●	3	Feb	\$33,500	6.5	80	60	8	28
Bachelor of Arts/Bachelor of Behavioural Science	3030	045242K	●	●	4	Feb/July	\$28,600	6.5	70	53	5	24
Bachelor of Arts (Politics & Journalism)	3026	045241M	●	●	3	Feb/July	\$29,000	6.5	70	53	5	24
Bachelor of Arts (Politics & Journalism)/Bachelor of Behavioural Science	3286	057663A	●	●	4	Feb/July	\$29,000	6.5	70	53	5	24
Bachelor of Behavioural Science	3034	040261C	●	●	3	Feb/July	\$29,000	6.5	70	53	5	24
Bachelor of Communications & Media	3363	073150D	●	●	3	Feb/July	\$29,000	6.5	70	53	5	24
Bachelor of Communications & Media/Bachelor of Arts	3366	073153A	●	●	4	Feb/July	\$29,000	6.5	70	53	5	24
Bachelor of Communications & Media/Bachelor of Behavioural Science	3367	073154M	●	●	4	Feb/July	\$29,000	6.5	70	53	5	24
Bachelor of Communications & Media/ Bachelor of Marketing & Public Relations	3365	073158G	●	●	4	Feb/July	\$29,500	6.5	70	53	5	24
Bachelor of Counselling	3543	035277D	●	●	3	Feb	\$31,200	6.5	70	53	5	24
Bachelor of Science	3555	045168D	●	●	3	Feb/July	\$37,072	6.5	70	53	5	24
<b>Streams:</b> <ul style="list-style-type: none"><li>Biology and Environment</li><li>Environment and Heritage</li><li>Human and Medical Science</li><li>Multidisciplinary Stream</li></ul>												
Bachelor of Science/Bachelor of Arts	3235	045169C	●	●	4	Feb/July	\$37,072	6.5	70	53	5	24
Bachelor of Science/Bachelor of Behavioural Science	3236	045170K	●	●	4	Feb/July	\$37,072	6.5	70	53	5	24
<b>SCHOOL OF BUSINESS</b>												
Bachelor of Accounting	3503	085834K	●	●	3	Feb/July	\$38,000	6.5	70	53	5	24
Bachelor of Business Administration	3506	089562G	●	●	3	Feb/July	\$30,000	6.5	70	53	5	24
Bachelor of Commerce	3058	019595A	●	●	3	Feb/July	\$30,000	6.5	70	53	5	24
<b>Majors and/or Double Majors</b> (S = Sydney only; F = Fremantle only):												
<ul style="list-style-type: none"> <li>Accounting</li> <li>Advertising (S)</li> </ul>	<ul style="list-style-type: none"> <li>Economics</li> <li>Finance</li> </ul>	<ul style="list-style-type: none"> <li>Human Resource Management</li> <li>Management</li> </ul>	<ul style="list-style-type: none"> <li>Marketing</li> <li>Public Relations</li> </ul>	<ul style="list-style-type: none"> <li>Sport &amp; Recreation Management (F)</li> </ul>								
Bachelor of Commerce/Bachelor of Arts	3070	040372G	●	●	4	Feb/July	\$34,150	6.5	70	53	5	24
Bachelor of Commerce/Bachelor of Behavioural Science	3068	045090K	●	●	4	Feb/July	\$34,150	6.5	70	53	5	24
Bachelor of Commerce/Bachelor of Communications & Media	3378	073149G	●	●	4	Feb/July	\$34,150	6.5	70	53	5	24
Bachelor of Commerce/Bachelor of Science	3076	045095E	●	●	4	Feb/July	\$36,975	6.5	70	53	5	24
Bachelor of Commerce/Bachelor of Sport & Recreation Management	3078	045097C	●	●	4	Feb	\$30,000	6.5	70	53	5	24
Bachelor of Human Resource Management	3167	040383D	●	●	3	Feb/July	\$30,000	6.5	70	53	5	24
Bachelor of Human Resource Management/Bachelor of Arts	3322	083614E	●	●	4	Feb/July	\$34,150	6.5	70	53	5	24
Bachelor of Human Resource Management/ Bachelor of Behavioural Science	3170	040384C	●	●	4	Feb/July	\$34,150	6.5	70	53	5	24
Bachelor of Marketing & Public Relations	3213	040391D	●	●	3	Feb/July	\$30,000	6.5	70	53	5	24
Bachelor of Marketing & Public Relations/Bachelor of Arts	3329	074296M	●	●	4	Feb/July	\$34,150	6.5	70	53	5	24
Bachelor of Marketing & Public Relations/ Bachelor of Behavioural Science	3505	074295A	●	●	4	Feb/July	\$34,150	6.5	70	53	5	24
Bachelor of Marketing & Public Relations/ Bachelor of Communications & Media	3375	073023M	●	●	4	Feb/July	\$34,150	6.5	70	53	5	24
Bachelor of Sport & Recreation Management	3245	040393B	●	●	3	Feb	\$30,000	6.5	70	53	5	24
Bachelor of Sport & Recreation Management/ Bachelor of Communications & Media	3376	074297K	●	●	4	Feb	\$34,150	6.5	70	53	5	24

### Undergraduate table key

#### DURATION (YEARS)

Normal time taken to complete the program. Some Majors / Double Majors require the completion of additional courses which extends the duration of the program; these Majors are not available to applicants who will be studying on a student visa.

#### IELTS ATAR

International English Language Testing System  
Australian Tertiary Admission Rank

#### WAUFP GCE

Western Australian Universities' Foundation Program  
General Certificate of Education (best of 3 subjects)

#### \* IELTS SCORES (International English Language Testing System)

Overall IELTS of 6.5 requires no band lower than 6.0.  
Overall IELTS of 7.0 requires no band lower than 7.0.  
Overall IELTS of 7.5 requires no band lower than 7.0 and no less than 7.5 in writing.  
Overall IELTS of 7.5 requires no band lower than 7.0 and no less than 8.0 in speaking and listening.

**PLEASE NOTE:**  
Program listings, fees and admission requirements are correct at the time of printing and may be subject to change. Please refer to the disclaimer on page 119.

## Undergraduate degrees

printing and may be subject to change. Please refer to the disclaimer on page 119.

Undergraduate degrees

	PROGRAM CODE	CRICOS CODE	CAMPUS		DURATION (YEARS)	INTAKE	2021 INDICATIVE ANNUAL FEE (A\$ )	ENTRY REQUIREMENTS					
			FREMANTLE	SYDNEY				IELTS (ACADEMIC) *	ATAR	WAUFP CPS	GCE-A LEVELS	INTERNATIONAL BACCALAUREATE	
SCHOOL OF EDUCATION													
Bachelor of Education (Early Childhood & Care: 0-8 Years)	3382	073159F	●		4	Feb/July	\$30,880	7.5	70	53	5	24	
Bachelor of Education (Early Childhood & Care: 0-8 Years)/Bachelor of Arts	3426	073160B	●		5.5	Feb/July	\$34,854	7.5	80	60	8	28	
Bachelor of Education(Early Childhood & Care: 0-8 Years)/ Bachelor of Behavioural Science	3427	073162M	●		5.5	Feb/July	\$34,854	7.5	80	60	8	28	
Bachelor of Education (Early Childhood & Care: 0-8 Years)/ Bachelor of Science	3428	073163K	●		5.5	Feb/July	\$37,679	7.5	80	60	8	28	
Bachelor of Education (Primary)	3114	035285D	●		4	Feb/July	\$30,880	7.5	70	53	5	24	
Bachelor of Education (Primary)/Bachelor of Arts	3118	045114G	●		5	Feb/July	\$34,854	7.5	80	60	8	28	
Bachelor of Education (Primary)/Bachelor of Behavioural Science	3119	045115F	●		5	Feb/July	\$34,854	7.5	80	60	8	28	
Bachelor of Education (Primary)/Bachelor of Science	3124	045119B	●		5	Feb/July	\$37,679	7.5	80	60	8	28	
Bachelor of Education (Secondary)	3126	035286C	●		4	Feb/July	\$30,880	7.5	80	60	8	28	
Bachelor of Education (Secondary)/Bachelor of Arts	3319	074292D	●		5	Feb/July	\$34,854	7.5	80	60	8	28	
Bachelor of Education (Secondary)/Bachelor of Behavioural Science	3130	045121G	●		5	Feb/July	\$34,854	7.5	80	60	8	28	
Bachelor of Education (Secondary)/Bachelor of Science	3320	074293C	●		5	Feb/July	\$37,679	7.5	80	60	8	28	
Bachelor of Primary Education	3476	083621F		●	4	Feb/July	\$30,880	7.5	80	53	8	28	
Bachelor of Secondary Education	3562	083612G		●	4	Feb/July	\$30,880	7.5	80	60	8	28	
SCHOOL OF HEALTH SCIENCES (Fremantle Campus)													
Bachelor of Biomedical Science	3041	049306M	●		3	Feb/July	\$37,072	6.5	70	53	5	24	
Bachelor of Exercise & Sport Science	3161	055343M	●		3	Feb	\$33,000	6.5	70	53	5	24	
Bachelor of Health & Physical Education (Primary)	3287	057667G	●		4	Feb	\$30,880	7.5	70	60	5	24	
Bachelor of Health & Physical Education (Secondary)	3288	057668G	●		4	Feb	\$30,880	7.5	80	60	8	28	
Bachelor of Outdoor Recreation	3310	061707D	●		3	Feb	\$30,880	6.5	70	53	5	24	
Bachelor of Health Promotion	3289	057670B	●		3	Feb	\$33,000	6.5	70	53	5	24	
SCHOOL OF LAW													
Bachelor of Laws	3510	023751D	●	●	4	Feb	\$38,000	7.5	90	70	12	33	
Bachelor of Laws (Graduate Entry)	3530	072973F	●	●	3.5	Feb	\$38,000	7.5	NA	NA	NA	NA	
Bachelor of Laws/Bachelor of Arts	3512	095678A	●	●	5.25	Feb	\$43,000	7.5	90	70	12	33	
Bachelor of Laws/Bachelor of Arts (Politics & Journalism)	3514	095679M	●	●	5.25	Feb	\$43,000	7.5	90	70	12	33	
Bachelor of Laws/Bachelor of Behavioural Science	3516	095680G	●		5.125	Feb	\$43,000	7.5	90	70	12	33	
Bachelor of Laws/Bachelor of Biomedical Science	3522	095681F	●		5.38	Feb	\$47,036	7.5	90	70	12	33	
Bachelor of Laws/Bachelor of Commerce	3520	095682E	●	●	5.25	Feb	\$43,500	7.5	90	70	12	33	
Bachelor of Laws/Bachelor of Communications & Media	3518	095683D	●	●	5.25	Feb	\$43,000	7.5	90	70	12	33	
Bachelor of Laws/Bachelor of Human Resource Management	3524	095684C	●	●	5.63	Feb	\$43,500	7.5	90	70	12	33	
Bachelor of Laws/Bachelor of Marketing & Public Relations	3526	095685B	●	●	6	Feb	\$43,500	7.5	90	70	12	33	
Bachelor of Laws/Bachelor of Philosophy	3532	095686A	●	●	5.25	Feb	\$43,000	7.5	90	70	12	33	
Bachelor of Laws/Bachelor of Science	3528	095687M	●		5.25	Feb	\$47,036	7.5	90	70	12	33	
SCHOOL OF NURSING													
Bachelor of Nursing	3536	032049G	●		3	Feb/July	\$35,458	7	70	53	5	24	
	3571	083619M		●	3	Feb	\$35,458	7	70	53	5	24	
Bachelor of Nursing (EN Articulation Pathway)	3536	032049G	●		2	Feb/July	\$ 35,458	7	70	53	5	24	
	3571	032049G		●	2	Feb/July	\$ 35,458	7	70	53	5	24	
Entry requirements: current registration with AHPRA as an Enrolled Nurse and successful completion of Diploma HLT51607, HLT51612 or HLT54115													
SCHOOL OF PHILOSOPHY & THEOLOGY													
Diploma of Theology	2007	017653A	●		1	Feb/July	\$29,400	6.5	70	53	5	24	
Bachelor of Philosophy	3311	061708C	●	●	3	Feb/July	\$29,400	6.5	70	53	5	24	
Bachelor of Theology	3248	015330C	●	●	3	Feb/July	\$29,400	6.5	70	53	5	24	
Bachelor of Philosophy/Bachelor of Theology	3432	085835J	●	●	5	Feb/July	\$29,400	6.5	70	53	5	24	
SCHOOL OF PHYSIOTHERAPY (Fremantle Campus)													
Bachelor of Physiotherapy	3538	045167E	●		4	Feb	\$38,200	7	90	70	12	33	
Bachelor of Physiotherapy/Bachelor of Exercise & Sport Science	3540	073025J	●		5.5	Feb	\$42,110	7	90	70	12	33	

### Postgraduate degrees by coursework

Postgraduate degrees by coursework	PROGRAM CODE	CRICOS CODE	CAMPUS		STUDY TYPE	DURATION (YEARS)	INTAKE	2021 INDICATIVE ANNUAL FEE (A\$ )	IELTS (ACADEMIC) *
			FREMANTLE	SYDNEY					
SCHOOL OF ARTS & SCIENCES									
Master of Architecture	5152	099073J	●		C	2	Feb/July	\$36,000	6.5
Master of Counselling	5023	055386M	●	●	C+D	2	Feb/July	\$33,800	6.5
SCHOOL OF EDUCATION									
Graduate Certificate in Religious Education	4073	095690E	●		C	0.5	Feb/July	\$16,625	7.5
Master of Teaching (Primary Education)	5143	039694K	●		C	2	Jan	\$30,880	7.5
Master of Teaching (Secondary Education)	5144	040441K	●		C	2	Jan	\$30,880	7.5
SCHOOL OF LAW									
Master of Laws (coursework)	5154	0101871		●	C+D	2	Feb/July	\$38,000	6.5
SCHOOL OF MEDICINE									
Doctor of Medicine (MD)	5142	095688K		●	C	4	Jan	\$75,000	7
SCHOOL OF NURSING & MIDWIFERY									
Graduate Certificate in Contemporary Nursing	4151	0101873	●	●	C	0.5	Jan/May	\$17,729	7
The Graduate Certificate in Contemporary Nursing is only available for international students who have a current and valid APHRA letter of referral to undertake the program.									
Graduate Diploma of Midwifery	4114	078806F	●		C	1.5	Jan/July	\$35,458	7
The Graduate Diploma of Midwifery is only available to international students currently registered with the The Australian Health Practitioner Regulation Agency (APHRA) as a Registered Nurse.									
SCHOOL OF PHILOSOPHY & THEOLOGY									
Graduate Certificate in Liberal Arts (Philosophy & Theology)	4110	095689J	●	●	C	0.5	Feb/July	\$15,250	6.5
Graduate Diploma of Philosophy	4146	089564F	●	●	C	1	Feb/July	\$30,500	6.5
Graduate Diploma of Theology	4125	032058F	●	●	C	1	Feb/July	\$30,500	6.5
Master of Arts (Philosophy)	5139	085832A	●	●	C+D	2	Feb/July	\$30,500	6.5
Master of Arts (Theology)	5138	085833M	●	●	C+D	2	Feb/July	\$30,500	6.5

### Postgraduate coursework table key

#### STUDY TYPE

C	Coursework
C+D	Coursework + Dissertation

#### DURATION (YEARS)

Normal time taken to complete the program. Some Majors/Double Majors require the completion of additional courses which extends the duration of the program; these Majors are not available to anyone on a student visa.

#### \* IELTS SCORES (International English Language Testing System)

Overall IELTS of 6.5 requires no band lower than 6.0 and no less than 6.5 in writing.

Overall IELTS of 7.0 requires no band lower than 7.0.

Overall IELTS of 7.5 requires no band lower than 7.0. and no less than 8.0 in speaking and listening.



**PLEASE NOTE:**  
Program listings, fees and admission requirements are correct at the time of printing and may be subject to change. Please refer to the disclaimer on page 119.

## Higher degrees by Research

Higher degrees by Research		SCHOOL / DISCIPLINE AREA	PROGRAM CODE	CRICOS CODE	CAMPUS		DURATION (YEARS)	INTAKE	2021 INDICATIVE ANNUAL FEE (A\$ )	IELTS (ACADEMIC) *
MASTER OF PHILOSOPHY										
Master of Philosophy	Arts & Sciences	5124	078922B	●	●	1.5	Feb/Jul	\$40,169	7	
	Business	5125	078918J	●	●					
	Education	5126	078924M	●	●					
	Health Sciences	5127	061767C	●						
	Law	5128	078922B	●	●					
	Medicine	5119	061767C	●	●					
	Nursing	5118	061765E	●	●					
	Philosophy & Theology	5129	078922B	●	●					
	Physiotherapy	5130	061767C	●						
MASTERS BY RESEARCH										
Master of Arts	Arts & Sciences	5096	061750A	●	●	2	Feb/July	\$40,169	7	
Master of Business	Business	5097	023754A	●	●	2	Feb/July	\$40,169	7	
Master of Education	Education	5112	073035G	●	●	2	Feb/July	\$40,169	7	
Master of Health Sciences	Health Sciences	5090	065272E	●		2	Feb/July	\$40,169	7	
Master of Laws	Law	5044	073036F	●	●	2	Feb/July	\$40,169	7	
Master of Nursing	Nursing	5116	073038D	●	●	2	Feb/July	\$40,169	7	
Master of Religious Education	Education	5113	073040K	●	●	2	Feb/July	\$40,169	7	
Master of Science (Arts & Sciences)	Arts & Sciences	5120	075784J	●		2	Feb/July	\$40,169	7	
Master of Science (Medicine)	Medicine	5092	078799M	●	●	2	Feb/July	\$40,169	7	
Master of Science (Physiotherapy)	Physiotherapy	5121	075783K	●		2	Feb/July	\$40,169	7	
Master of Theology	Philosophy & Theology	5115	073041J	●	●	2	Feb/July	\$40,169	7	
PROFESSIONAL DOCTORATE										
Doctor of Business Administration	Business	6100	040396K	●	●	3	Feb	\$45,141	7	
Doctor of Counselling	Arts & Sciences	6300	074299G	●		3	Feb	\$45,141	7	
Doctor of Education	Education	6200	032064G	●	●	3	Feb	\$45,141	7	
Doctor of Health Sciences	Health Sciences	6305	074300J	●		3	Feb	\$45,141	7	
Doctor of Nursing	Nursing	6301	052527E	●	●	3	Feb	\$45,141	7	
Doctor of Physiotherapy	Physiotherapy	6003	075781A	●		3	Feb	\$45,141	7	
DOCTOR OF PHILOSOPHY										
Doctor of Philosophy	Arts & Sciences	6600	011396F	●	●	3	Feb/July	\$45,141	7	
	Business	6102	011396F	●	●					
	Education	6201	011396F	●	●					
	Health Sciences	6302	011396F	●						
	Law	6400	011396F	●	●					
	Medicine	6900	057673K	●	●					
	Nursing	6800	057674J	●	●					
	Philosophy & Theology	6502	011396F	●	●					
	Physiotherapy	6002	075782M	●						

## Research table key

### DURATION (YEARS)

Normal time taken to complete a program.

May vary depending on number of enrolled courses per semester.

### \* IELTS SCORES (International English Language Testing System)

Overall IELTS of 7.0 requires no band less than 6.5 with a minimum of 7.0 in writing.

### ONE

#### Am I an international student?

You are an international student if you are:

- a temporary resident (visa status) of Australia;
- a permanent resident (visa status) of New Zealand; or
- a resident or citizen of any other country.

International students studying in Australia on a student visa can only study full-time and there are also specific entry requirements that must be met.

### TWO

#### What does ‘certified copy’ mean?

A certified copy is a photocopy of an original document that has been sighted, stamped, dated and signed by a certifying agent as a true copy of the original. The accepted people who can do this include an Australian consular official, High Commission or Trade official; a person of authority at the issuing institution (for example, the registrar); a Justice of the Peace; or public notary.

Alternatively, members of the Notre Dame International Office and registered agents (see [notredame.edu.au/international/agents](https://notredame.edu.au/international/agents)) can verify your documents for admission purposes only.

All copies of transcripts and official documents accompanying an application must be certified.

For more information, visit [notredame.edu.au/study/documents](https://notredame.edu.au/study/documents).

### THREE

#### Can I be issued a packaged offer?

Conditional or packaged offers are only made in conjunction with existing pathway partner arrangements. Please contact [international@nd.edu.au](mailto:international@nd.edu.au) for more details.

### FOUR

#### Can I be issued a conditional offer?

Conditional offers may be made to international students if they have satisfied most of the minimum entry requirements for their program.

### FIVE

#### How do I know how many courses will be credited from my previous study?

You may submit your application for Advanced Standing at the time of application. For more information, visit [notredame.edu.au/study/admission-requirements/advanced-standing](https://notredame.edu.au/study/admission-requirements/advanced-standing).

### SIX

#### My academic transcripts and certificates are not in English. What do I do?

You must have your qualification translated and provide the International Office with certified copies of the translation and qualification or award by a certified NAATI translator.

National Accreditation Authority for Translators and Interpreters (NAATI): [www.naati.com.au](http://www.naati.com.au).

### SEVEN

#### Do I need to sit an English language test?

Students who have completed specified secondary or tertiary education in English may use this to demonstrate English language competency.

Some programs, including Medicine, Nursing, Law, Education and Physiotherapy, have higher English language proficiency requirements.

For more details, see [notredame.edu.au/international/how-to-apply](https://notredame.edu.au/international/how-to-apply) or refer to the degree tables from pages 106–109 of this guide.

Please note: Notre Dame reserves the right to request the evidence of English competencies from any applicant or a recognised English language test.

### EIGHT

#### Can I apply for a Scholarship?

A range of Scholarships are available for international students, including some which do not require the submission of an additional application. A current list of Scholarships can be found at [notredame.edu.au/international/fees](https://notredame.edu.au/international/fees).

### NINE

#### Where do I go for the most up-to-date information?

If there are any changes to the information provided in this program guide, updated details can be found on the University website: [notredame.edu.au](https://notredame.edu.au).

# International Application for Admission



THE UNIVERSITY OF  
NOTRE DAME  
AUSTRALIA

Please refer to the back of this document for instructions on how to complete this form.

Please use BLOCK/CAPITAL letters, indicate with "N/A" where questions are not applicable and tick boxes where appropriate.

## 1. APPLICANT TYPE

☐ English Pathway Program ☐ Academic Pathway Program ☐ Undergraduate Postgraduate: ☐ Coursework ☐ Research

## 2. YOUR DETAILS

2.1 Have you been a student previously at Notre Dame?

☐ No ☐ Yes If yes, please indicate your previous student number

2.2 Title First name Family / Surname Second / Middle name

Date of birth (day/month/year) Gender Given name as shown in your passport (if different to above)

-       ☐ Male ☐ Female

Have you been known by another name? ☐ Yes ☐ No If so, what was your previous name?

## 2.3 CONTACT INFORMATION

### Permanent address in home country

Address

Town/suburb

State/country

Postcode

Telephone (include country code)

Mobile/cell

Email

**Notification address** – this address is for all correspondence during the application process. Print 'as above' if the same as home address.

Address

Town/suburb

State/country

Postcode

Telephone (include country code)

Mobile/cell

2.4 **PASSPORT DETAILS** (If you are a Safe Haven/Humanitarian visa holder, please provide a copy of your ImmiCard).

Passport number

Expiry date

Country of citizenship

Country of birth

2.5 **LANGUAGES** – Please list all languages spoken at home in order of use.

2.6 **MEDICAL OR SPECIAL NEEDS** – disclosing this information will not affect your admission to the University.

Do you have a disability or impairment? ☐ Yes ☐ No If yes, please indicate the disability or impairment below:

☐ Acquired brain injury

☐ Mental health condition

☐ Physical disability

☐ Intellectual disability

☐ Deaf / deaf

☐ Other disability

☐ Neurological condition

☐ Low vision / blind

Do you require medical or disability support during your studies? ☐ Yes ☐ No

☐ Specific learning disability

☐ Medical condition

3. **APPLICATION TO STUDY** – if you are applying for a **research program**, please ensure to complete PART C of this form.

3.1 **Program preferences** – Campus ☐ Fremantle ☐ Sydney

1. Program name

Program code

2. Program name

Program code

3. Program name

Program code

Intended commencement of study program (see [notredame.edu.au/current-students/your-enrolment/calendars-and-timetables](http://notredame.edu.au/current-students/your-enrolment/calendars-and-timetables)):

Year ☐ Semester 1 ☐ Semester 2

Do you intend to apply for advanced standing (credits or exemptions) based on your previous studies? ☐ Yes ☐ No

### 3.2 Educational background

Please indicate the highest level of your secondary schooling and the year in which this was completed

☐ Year 11 ☐ Year 12 or equivalent Completed in calendar year

Please note, for on-shore applicants completing ATAR, Equity Group Adjustments, as determined by the University, may apply.

3.2.1 Please indicate the studies you have completed (or intend to complete) and the year in which you completed (or expect to complete), the qualification. If you have completed more than one qualification at the same level, please indicate the most recently completed qualification and year:

Qualification (A-levels, Diploma, Degree, etc.)	Institution name	Country awarded	Year commenced	Last year of enrolment	Date completed (or expected date of completion)

Have you ever failed, been excluded (or are you facing exclusion) from a course on academic or other grounds? ☐ Yes ☐ No

If you answered 'Yes' to this question, please provide a written explanation of your course failure or program exclusion and all relevant academic transcripts with this application form.

Are you currently studying at another institution in Australia or have you recently been issued with any electronic Confirmations of Enrolment? ☐ Yes ☐ No

If yes, please complete the details below and provide a copy of all currently held electronic Confirmations of Enrolment.

3.3 English proficiency – is English your first language? ☐ Yes ☐ No

Students must demonstrate evidence of having a level of English sufficient to succeed in their chosen program of study. Further information regarding recognised English proficiency tests, minimum scores, and study that can be used to demonstrate English proficiency see [notredame.edu.au/international/how-to-apply](http://notredame.edu.au/international/how-to-apply).

Please select one of the following:

☐ I have taken a recognised English proficiency test

Name of test \_\_\_\_\_ Score \_\_\_\_\_ Date of test   –   –

☐ I will take a recognised English proficiency test on   –   –

☐ I have undertaken relevant secondary or tertiary study which demonstrates English proficiency (see [notredame.edu.au/international/how-to-apply](http://notredame.edu.au/international/how-to-apply))

## 4. DECLARATION OF AUTHORISATION TO ACT ON YOUR BEHALF

I, \_\_\_\_\_, authorise  
to act on my behalf and access and discuss with the University my: ☐ application ☐ academic records ☐ financial records  
I agree not to hold the University responsible nor liable for the actions of the authorised Agent of person. I understand that I may terminate this Authority to Act.

### APPLICANT'S SIGNATURE

Signature \_\_\_\_\_

Date (dd/mm/yyyy)   –   –

Date of Birth (dd/mm/yyyy)   –   –

### PERSON OR AGENT'S SIGNATURE (Agent's stamp)

Signature \_\_\_\_\_

Date (dd/mm/yyyy)   –   –

Relationship to applicant \_\_\_\_\_

**Agency Assistance** – This section is to be completed ONLY if you have utilised the service of a registered education agency or authorised representative of Notre Dame.

Agency name \_\_\_\_\_

Agent's name \_\_\_\_\_

Agency email \_\_\_\_\_

Agency telephone number \_\_\_\_\_



## Genuine Temporary Entrant (GTE) Assessment

This form is a tool intended to assist international students and their agents to demonstrate that the applicant meets the Australian Government's Genuine Temporary Entrant (GTE) criteria. It is designed to manage the immigration risk of the University's students and prospective students, and based on information published by the Australian Department of Home Affairs.

The form should be completed correctly by the applicant as well as the education agent (if the student is using an agent) and all required documentation should be attached. For further information visit: <https://immi.homeaffairs.gov.au/visas/getting-a-visa/visa-listing/student-500/genuine-temporary-entrant>.

If you intend to commence at Notre Dame as a non-student visa holder please continue to **PART C** of the application.

### 5. VISA DETAILS

#### 5.1 Australian Visa details

Do you currently hold an Australian visa? ☐ Yes ☐ No – If yes, please provide copies of your current visa as part of your application.

Have you or have any of your dependants breached a condition of a visa, been refused a visa, had a visa cancelled or been removed or deported from any country including Australia for any reason? ☐ Yes ☐ No

If so, which country, when and for what reason? **Please attach refusal/cancellation letter/s.**

#### 5.2 Dependants

What is your relationship status? ☐ Single ☐ Engaged ☐ Married/De Facto ☐ Divorced/Widowed

If in a relationship, what is your spouse's occupation?

Do you have any dependants? ☐ Yes ☐ No – If yes, how many?

Will you be accompanied to Australia by: i. School children (aged 5-16 years) ☐ Yes ☐ No – If yes, how many?  
ii. Spouse ☐ Yes ☐ No

Student dependants cannot enrol in a government school unless they meet the criteria set by the Department of Education in your State. You must otherwise enrol your dependants in a registered non-government school. For more information see [notredame.edu.au/international/moving-to-australia](http://notredame.edu.au/international/moving-to-australia). Please contact the International Office if you will be accompanied by any school-aged children.

### 6. CHOICE OF EDUCATION PROVIDER/FUTURE BENEFITS

Is there a similar program available to study in your home country? ☐ Yes ☐ No

Why are you applying to Notre Dame in your degree of interest?

How many years since you last studied?

If there is a gap (one or more years) in between your studies, please explain what you were doing in this time.

What employment opportunities are available in your home country for someone with the qualifications you are seeking?

## 7. FUNDING YOUR STUDIES

### 7.1 What are the expected expenses for tuition fees for the entire duration of your program?

Do you have access to sufficient funds to support you (and your dependants, if applicable) for your total time studying in Australia (living costs and tuition fees)? ☐ Yes ☐ No

Are you aware of the working restrictions whilst studying full-time in Australia? ☐ Yes ☐ No

Who will be paying for your studies and living expenses while in Australia? (Please provide evidence of the payee's income or approved bank loan.)

### 7.2 Sponsorship information (Sponsored applicants only)

Do you already have a sponsor/scholarship from an organisation or government? ☐ Yes ☐ No

If you do not have a sponsor/scholarship, do you intend to apply for a scholarship? ☐ Yes ☐ No

Sponsor/scholarship name

Country

Email

**NB: If your sponsor fails to fulfil its financial obligations, you will be liable for any outstanding fees, charges, debts or any other specified amount properly incurred. Please attach copies of letter of guarantee documents from your sponsor (if available) and/or copies of any scholarship letters.**

## 8. HEALTH INSURANCE

**Overseas Student Health Cover** – Do you have existing Overseas Student Health Cover (OSHC)? ☐ Yes ☐ No

**If yes:** Name of insurance provider

Valid from:   -   -

Insurance policy number

to:   -   -

**If no:** Type of cover required: ☐ Single ☐ Couple ☐ Family

**Please note:** if you do not have existing OSHC with an existing provider for the duration of your program The University of Notre Dame Australia will organise this on your behalf after payment has been received.

## 9. CONNECTION TO AUSTRALIA

If you have any relatives in Australia, please complete the following:

Name

Relationship to you (e.g. brother)

Immigration status

Address

Town/suburb

State

Postcode

What type of accommodation do you intend to live in while studying at Notre Dame? (See pages 24–25 for accommodation information).

☐ Homestay ☐ With a relative ☐ With a friend ☐ On-Campus accommodation (Fremantle only)

☐ External student accommodation ☐ Shared accommodation

☐ Other (please specify)

If you have pre-arranged accommodation, please list the address.

Address

Town/suburb

State

Postcode

Do you have any family or business obligations in your home country (e.g. family, business, etc.)? ☐ Yes ☐ No If yes, please provide details.

# Research applicants

If you are applying for a non-award, undergraduate or postgraduate coursework program, please continue to PART D

## 10. RESEARCH APPLICANTS ONLY

Please state the discipline in which you propose to undertake research

Are you intending on residing in Australia to pursue your postgraduate research degree? ☐ Yes ☐ No

Have you attached an initial research proposal? (See point 10 of the application instructions at the back of this form) ☐ Yes ☐ No

Have you made contact with a potential research supervisor? ☐ No ☐ Yes: Name

### Background in research

Did any of your employment involve significant research work, the results of which can be verified by an employer? ☐ Yes ☐ No

If yes, you will need to provide at least two written references to verify this, along with the contact details of the person writing the reference.

Please describe any theses you have successfully completed as part of previous study programs – for the section ‘percentage (%) of degree’, please use your transcript to calculate the number of credit points used in the thesis component as a percentage of the total number of credit points for the program. e.g. a Master’s by Coursework with a thesis component of 48 credit points out of 144 credit points would be calculated at a percentage of 33.3%.

Degree name	Institution name	Title of thesis	Word length	% of degree	Year completed

CONTINUED OVERLEAF

## Declarations and checklist

### 11. CHARACTER DECLARATION

Have you ever been convicted of a criminal offence? ☐ Yes ☐ No The disclosure of previous criminal offences will be treated in strict confidence.

### 12. DOCUMENTATION CHECKLIST

Please attach the following documentation in support of your application. Where the documentation is not applicable to your situation, mark N/A.

- |   |   |
|---|---|
| <input type="checkbox"/> Yes <input type="checkbox"/> N/A | Certified/notarised transcripts and certificates of completion together with certified/notarised English translations of all academic studies undertaken (including studies not completed).   |
| <input type="checkbox"/> Yes <input type="checkbox"/> N/A | Certified/notarised documentary evidence of English language proficiency applicable to your chosen program of study (see <a href="http://notredame.edu.au/international/how-to-apply">notredame.edu.au/international/how-to-apply</a> ) |
| <input type="checkbox"/> Yes <input type="checkbox"/> N/A | Certified copies of electronic Confirmations of Enrolment issued from other Australian educational institutions.  |
| <input type="checkbox"/> Yes <input type="checkbox"/> N/A | Certified copies of personal details and photo pages of passport.   |
| <input type="checkbox"/> Yes <input type="checkbox"/> N/A | Certified copy of Australian Visa page of passport or Visa Grant Notice.  |
| <input type="checkbox"/> Yes <input type="checkbox"/> N/A | Certified copy of existing overseas student health cover (OSHC).  |
| <input type="checkbox"/> Yes <input type="checkbox"/> N/A | Curriculum vitae.   |
| <input type="checkbox"/> Yes <input type="checkbox"/> N/A | Any previous visa refusal or cancellation letters.  |
| <input type="checkbox"/> Yes <input type="checkbox"/> N/A | Evidence of your ability to pay tuition fees and living expenses while in Australia, such as payee's income or approved bank loan, which may include:   |
- Bank statements from the past six months. The source of any recent lump sum deposits needs to be explained and documented.
  - Bank loan – the loan letter must state the source and owner of the collateral used to secure the loan plus the length of loan and monthly repayments.
  - Employment certificate with salary information
  - Business registration certificate (if applicable).
  - Financial sponsorship declaration
  - Proof of relationship with the sponsor.
- |   |  |
|---|--|
| <input type="checkbox"/> Yes <input type="checkbox"/> N/A | Copy of any scholarship letter(s).   |
| <input type="checkbox"/> Yes <input type="checkbox"/> N/A | <b>If your name differs from that on any of your supporting documentation:</b> Proof of your change of name (e.g. marriage certificate, change of name certificate, etc.).   |
| <input type="checkbox"/> Yes <input type="checkbox"/> N/A | <b>Research applicants only:</b> An initial research proposal (see point 10 of "How to complete the application form").  |
| <input type="checkbox"/> Yes <input type="checkbox"/> N/A | <b>If applicable; at least two written references from your employment verifying any significant research work completed as part of your work experience, including the contact details of the person writing the reference.</b> |

### 13. APPLICANT DECLARATION – I declare that:

- |   |  |
|---|--|
| <ul style="list-style-type: none"> <li>I am aware of the tuition and living costs of my stay in Australia and have financial capacity to meet such costs for the duration of my course. I will make timely payments of any fees or associated costs.</li> <li>I have read and understood the information published by the University relating to my selected program, the application procedures, fees, overseas student health cover, refund policy and privacy policy.</li> <li>I authorise the University to audit my application by obtaining official records from any previous institution I have attended and conducting any other enquiries to verify documents provided by me or referred to in my application, including evidence of English language proficiency and referee reports. If requested by the University I agree to provide original and certified copies of documents to support my application.</li> <li>I understand that if I accept an offer of admission, I am required to complete a minimum of six months study in my enrolled program.</li> </ul> | <ul style="list-style-type: none"> <li>I understand that the information provided by me in relation to this application will be provided by the University to the Department of Home Affairs for the purpose of assessing and determining my student visa.</li> <li>I declare that the information in this application and the supporting documentation is true and correct. I acknowledge and accept that the provision of incorrect, false or fraudulent information and documentation or the withholding of relevant information or documentation, relating to this application may result in the University cancelling any offer of enrolment or actual enrolment.</li> <li>I understand that where the University detects fraudulent information or documentation has been provided in relation to my application this will be reported to the Department of Home Affairs and any other relevant statutory authority.</li> </ul> <p><b>I have read, understand and agree to all of the statements made above.</b></p> |
|---|--|

Signature

Date    –     (dd/mm/yyyy)

**INCOMPLETE APPLICATIONS WILL CAUSE A DELAY IN PROCESSING TIME**



# How to complete the application form

## NOTRE DAME APPLICATION FORM – PART A

---

### 1. APPLICANT TYPE

Indicate the type of program you are applying for.

### 2. YOUR DETAILS

2.1 Indicate whether you have previously studied at The University of Notre Dame Australia and provide your student number if applicable.

2.2 Please provide your details as listed. Print your name clearly in block letters. If your name differs from that on any of your supporting documentation, you are required to provide proof of the change (for example, marriage certificate or change of name certificate).

Applicants under the age of 18 at the time of offer should be aware that an electronic Confirmation of Enrolment will not be issued until the applicant turns 18, except in the case of packaged offers made in conjunction with an approved provider.

2.3 Please provide the details of your address and contact details in your home country and notification address for ongoing correspondence (in Australia or your home country).

2.4 Please provide your current passport and citizenship details.

2.5 Please indicate languages spoken at home in order of use.

2.6 Please indicate whether you have any medical or special needs. Disclosing this information will not affect your admission to the University.

If relevant, successful applicants will be informed of services and support available through the University's Disability Support Officer. Your privacy and confidentiality will be respected and your personal information will be managed in line with the University's Privacy Policy. While disclosure is voluntary, if you do not advise the University of your requirements before commencing your studies, there may be a delay in making arrangements to meet your needs.

### 3. APPLICATION TO STUDY

3.1 Please indicate the Campus you would like to study at. Include the program and program code (ND Code) that you wish to apply for. You can include up to three program preferences, with your most preferred program as preference 1. Please also indicate the commencement year and semester for which you are applying, taking into consideration the application due dates and commencement dates for each semester see: [notredame.edu.au/international/how-to-apply](https://notredame.edu.au/international/how-to-apply).

3.2 Please provide details of any current and/or previous education, including high school, vocational, college and/or university. These details will be used to assess your eligibility for your preferred program of study. If so, provide details and copies of any currently held electronic Confirmations of Enrolment.

3.3 Please select the means by which you will demonstrate a sufficient level of English to study in your preferred program. Please attach a certified copy of results from an approved English test or transcripts from relevant study. Further information on recognised English proficiency tests, minimum scores, and study that can be used to demonstrate English proficiency can be found at [notredame.edu.au/international/how-to-apply](https://notredame.edu.au/international/how-to-apply).

### 4. DECLARATION OF AUTHORISATION TO ACT ON YOUR BEHALF

If you are utilising the service of an education agency, please provide your agent's details. If applicable, the specified agency/agent will be authorised to access and discuss your application for admission and your academic record to The University of Notre Dame Australia with University staff. This authorisation will be applicable for the duration of the application process and, if applicable, the duration of your studies at Notre Dame unless otherwise directed by the applicant.

## GENUINE TEMPORARY ENTRANT (GTE) ASSESSMENT – PART B

---

For further information on the purpose of the Genuine Temporary Entrant Assessment visit: <https://immi.homeaffairs.gov.au/visas/getting-a-visa/visa-listing/student-500/genuine-temporary-entrant>.

### 5. VISA DETAILS

5.1 Please indicate if you currently hold an Australian visa and, if so, provide details. Indicate if you or your dependants have ever breached a condition of a visa, been refused a visa, had a visa cancelled or been removed or deported from any country including Australia for any reason and, if so, provide details.

5.2 Please indicate your relationship status and whether you will be accompanied by your spouse and/or any school children. For further information on schooling for dependants, see [notredame.edu.au/international/moving-to-australia](https://notredame.edu.au/international/moving-to-australia).

### 6. CHOICE OF EDUCATION PROVIDER/ FUTURE BENEFITS

- Please explain why you have chosen to study at Notre Dame, rather than at another university either in your home country, another country or Australia. Explain why you have chosen the Sydney or Fremantle Campus. Please also indicate if there is a program similar to the one you are applying to study at Notre Dame which is available to study in your home country. If so, please explain why you have chosen to study in Australia at Notre Dame rather than in your home country.

- Please indicate how many years have passed since you last studied (at high school, vocational training or university). If there is a gap (one or more years) in between your studies, please explain why there has been a gap in your studies (e.g. employment, family commitments, etc.) and why you wish to study again now.
- Please outline your future career plans and the employment opportunities in your home country for someone with the qualification you are seeking to undertake at Notre Dame.

## GENUINE TEMPORARY ENTRANT (GTE) ASSESSMENT — PART B (CONTINUED)

---

### 7. FUNDING YOUR STUDIES

- 7.1 Please specify your expected tuition fees for your studies for the entire duration of the program (i.e. annual tuition fee multiplied by the duration of the program).

Please indicate whether you have access to sufficient funds to support yourself and any dependants for the duration of your studies in Australia and whether you are aware of the working restrictions for student visa holders in Australia.

Outline who will be funding your studies in Australia and whether you are the recipient of

any scholarships. Evidence of payee's income, employment, financial sponsorship and/or any scholarships will need to be provided.

- 7.2 Where relevant, please provide details of any sponsorship or scholarships you have obtained or for which you intend to apply.

### 8. HEALTH INSURANCE

Please indicate whether you have existing OSHC (Australian Health Insurance). If yes, please indicate the provider, the policy number and the expiry date of the cover. If applicable, attach a certified

copy of your OSHC card with the application.

If you do not have existing OSHC, please indicate the type of cover required.

### 9. CONNECTION TO AUSTRALIA

- If you have any relatives in Australia, please provide details.
- Please indicate where you intend to live when you are in Australia.
- Outline any ties you have to your home country (e.g. family living at home, employment, business opportunities, etc.).

## RESEARCH APPLICANTS ONLY — PART C

---

### 10. RESEARCH APPLICANTS

If you are applying for a Research program (i.e. Master of Philosophy, Master's by Research, Doctor of Philosophy or Professional Doctorate), please refer to research instructions on website: [notredame.edu.au/\\_\\_data/assets/pdf\\_file/0017/45305/How-to-Apply-for-Admission-to-a-Higher-Degree-by-Research.pdf](https://notredame.edu.au/__data/assets/pdf_file/0017/45305/How-to-Apply-for-Admission-to-a-Higher-Degree-by-Research.pdf).

If your employment has involved

significant research experience, you will need to include two written references (one page) to verify this experience. Please include the name, professional position, email address and telephone number of each referee and indicate their relationship to you.

Please prepare an initial research proposal, of approximately one page in length, outlining your planned area of research.

This should include how you plan to undertake the project, and analyse your findings. Where possible, list potential supervisors and indicate if you have had contact with them. Additionally, please include a description of any research projects you have undertaken in academic or professional contexts, and details of any resulting publications.

## DECLARATIONS & DOCUMENTATION CHECKLIST — PART D

---

### 11. CHARACTER DECLARATION

Please indicate whether you have been convicted of a criminal offence. This information will be treated in the strictest confidence.

### 12. DOCUMENTATION CHECKLIST

Please tick the checklist to ensure your application form and documents are complete. If the listed documentation is not applicable to your application, tick the N/A (Not Applicable) column.

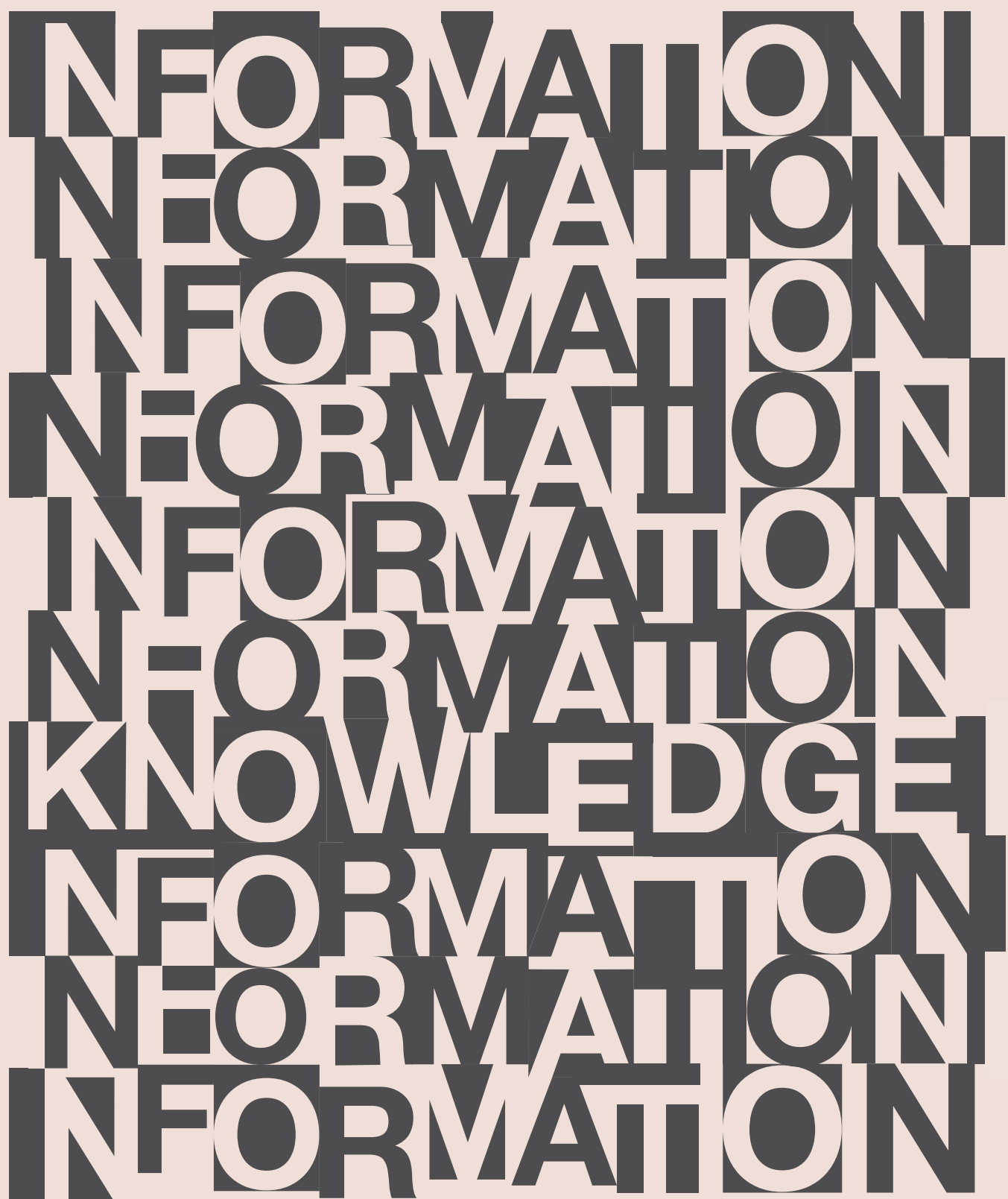
You may obtain certification of documents by presenting both the original documents and photocopies of these documents to a certifying agent. Overseas, certifying agents include: Australian Consular official, High Commission or Trade official,

or Public Notary. Documents can also be certified by one of Notre Dame's contracted agent partners (see [notredame.edu.au/international/agents](https://notredame.edu.au/international/agents)).

Certified translations completed by a National Accreditation Authority for Translators and Interpreters (NAATI) translator should be provided for qualifications written in a language other than English. Both the certified translation and a certified copy of the original document should be attached to the application.

### 13. APPLICANT DECLARATION

Please complete the declaration, having read all information on the form. Applications will not be processed without a signature.



**Notre Dame. Natural critical thinkers.**

DISCLAIMER – © 2020 | Under the Higher Education Support Act (2003), The University of Notre Dame Australia is obliged to provide students with a program assurance arrangement. Details of this arrangement are outlined on the University's web page. The information in this guide is correct at the time of printing but may be subject to change. Applicants are strongly advised to contact the University and check the University website for current information. The University reserves the right to withdraw, alter or vary any program, course of study, program content, assessment method or tuition fee that it offers or to vary program arrangements or impose limitations on enrolment. The University has obtained accreditation information in this guide from professional bodies offering accreditation for registration into a profession. Applicants are strongly advised to obtain current accreditation information by contacting the University, checking the University website and contacting professional bodies. The University of Notre Dame Australia will not be liable to you or to any other person for any loss or damage (including direct, consequential or economic loss or damage) however caused, including by negligence or otherwise, which may result directly or indirectly from or the use of, or reliance upon, this guide.



**Skills development**  
**#1 university in Australia\***

**Overall satisfaction**  
**#1 university in Australia\*\***

**Overall employer satisfaction**  
**#1 university in Australia\*\***

\*Student Experience Survey 2019

\*\*Graduate Outcomes Survey 2019  
compared.edu.au

Apply direct [notredame.edu.au/international](https://notredame.edu.au/international)

**Sydney Campus**

140 Broadway (PO Box 944), Chippendale NSW 2007  
Tel: +61 2 8204 4229 / Email: [international@nd.edu.au](mailto:international@nd.edu.au)

**Fremantle Campus**

19 Mouat Street (PO Box 1225), Fremantle WA 6959  
Tel: +61 8 9433 0873 / Email: [international@nd.edu.au](mailto:international@nd.edu.au)

Join our online community



@notredamesyd

CRICOS PROVIDER CODE: 01032F

© 2020 The University of Notre Dame Australia, all rights reserved.  
The information in this guide is correct at the time of printing  
but maybe subject to change.



@notredameaustralia